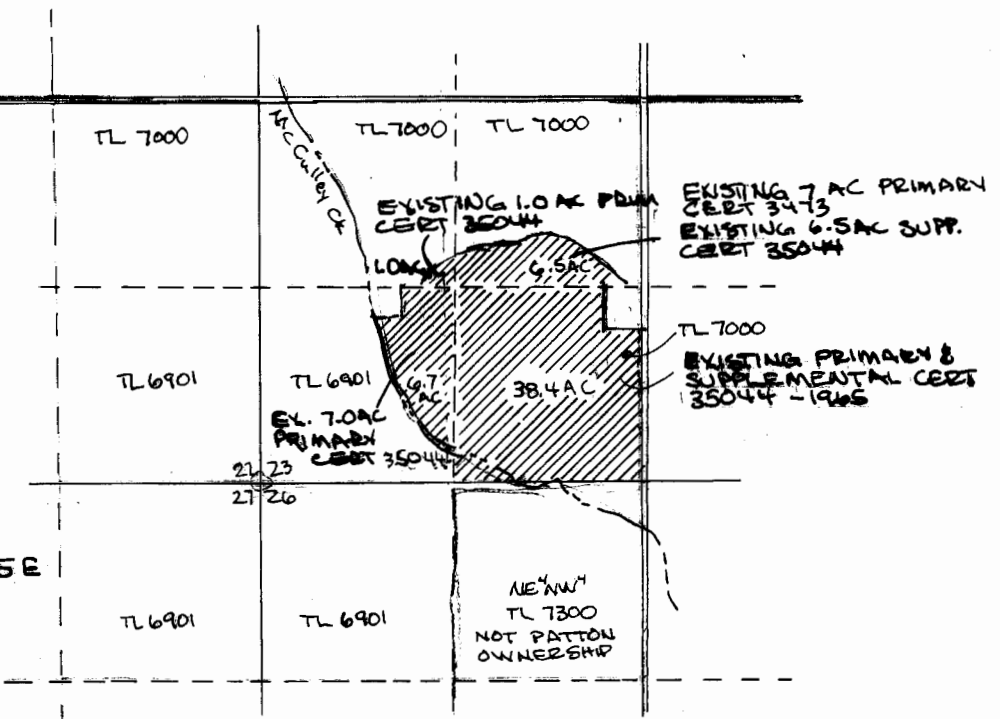
  
 1" = 1320'  
 T 25 R 45 E  
 SEC 23



PATTON OWNERSHIP IS TL 6901 160 AC & TL 7000 160 AC

RECEIVED BY OWRD

APR 17 2014

SALEM, OR

RECEIVED BY OWRD

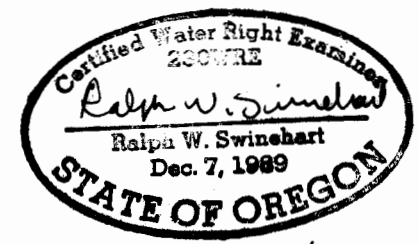
MAR 27 2014

SALEM, OR

THIS APPLICATION IS TO APPROPRIATE STORED WATER FROM WALLONA LAKE UNDER R-347 CERTIFICATE 9310 FOR THE SUPPLEMENTAL IRRIGATION OF 1.0 AC IN THE NW<sup>1</sup>/<sub>4</sub> SW<sup>1</sup>/<sub>4</sub>, 6.5 AC IN THE NE<sup>1</sup>/<sub>4</sub> SW<sup>1</sup>/<sub>4</sub>, 38.4 AC IN THE SE<sup>1</sup>/<sub>4</sub>, SW<sup>1</sup>/<sub>4</sub>, AND 6.7 AC IN THE SW<sup>1</sup>/<sub>4</sub> SW<sup>1</sup>/<sub>4</sub>, ALL IN SEC 23, T 25 R 45 E. WATER WILL DELIVERED VIA FARMERS DITCH AND UTILIZE EXISTING MAINLINES

POINT OF DIVERSION FOR FARMERS DITCH IS WALLONA LAKE DAM, 940'S 1500' E FROM THE NW CORNER OF SECS 5, T 35, R 45E WM.

THIS MAP IS BASED ON USGS QUAD MAP AND PREVIOUS WATER RIGHT MAP FOR CERT 35044. IT IS PREPARED FOR WATER RIGHT PURPOSES ONLY AND SHOULD NOT BE USED FOR PROPERTY LOCATION PURPOSES.

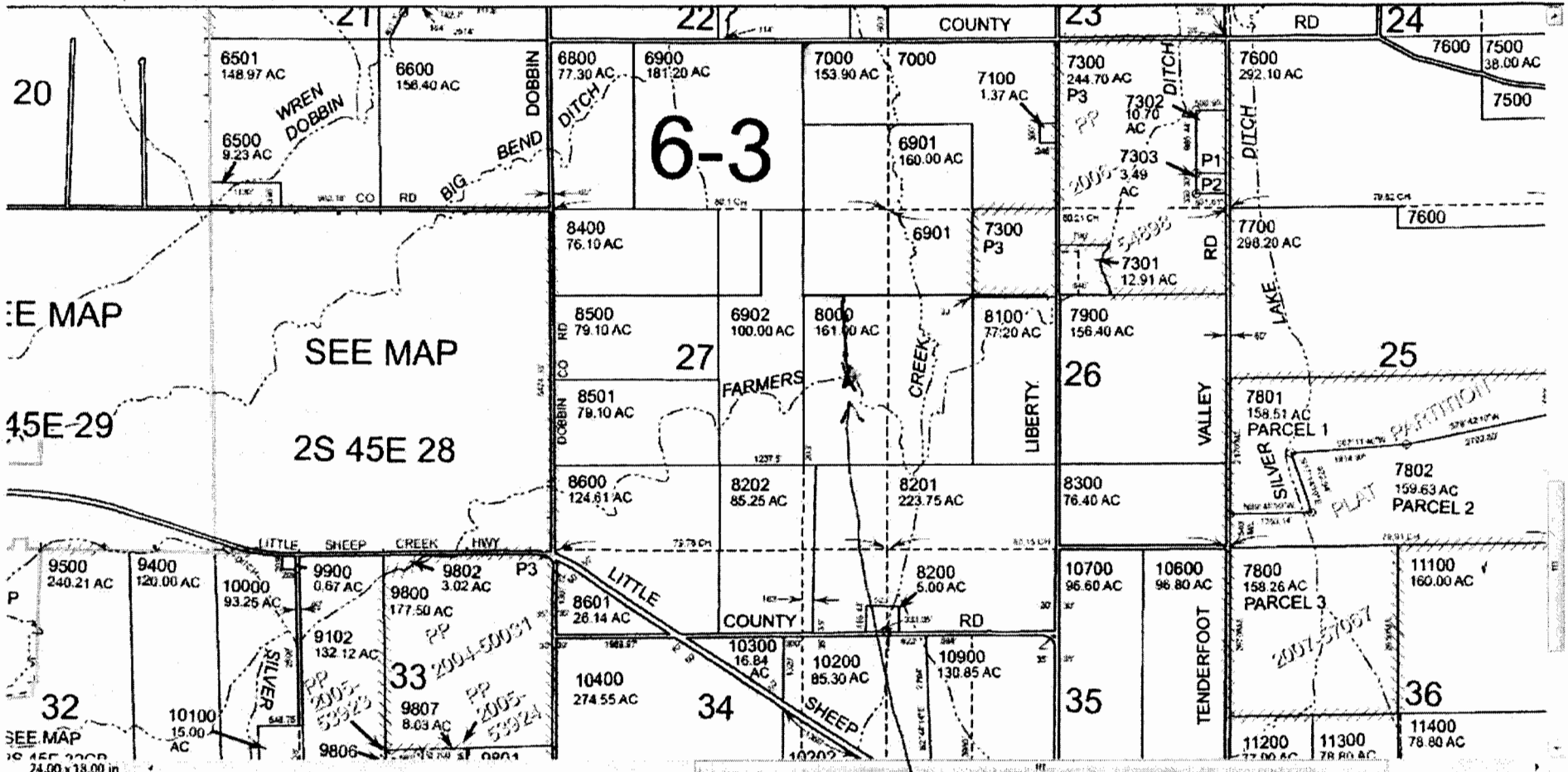


RENEWS 6/30/14

WATER RIGHT APPLICATION MAP FOR KARL & KAREN PATTON JOSEPH, OREGON

PREPARED BY:  
 WALLONA MOUNTAIN ENGINEERING  
 PO BOX 216  
 ENTERPRISE, OREGON

JAN. 2014



S-87972