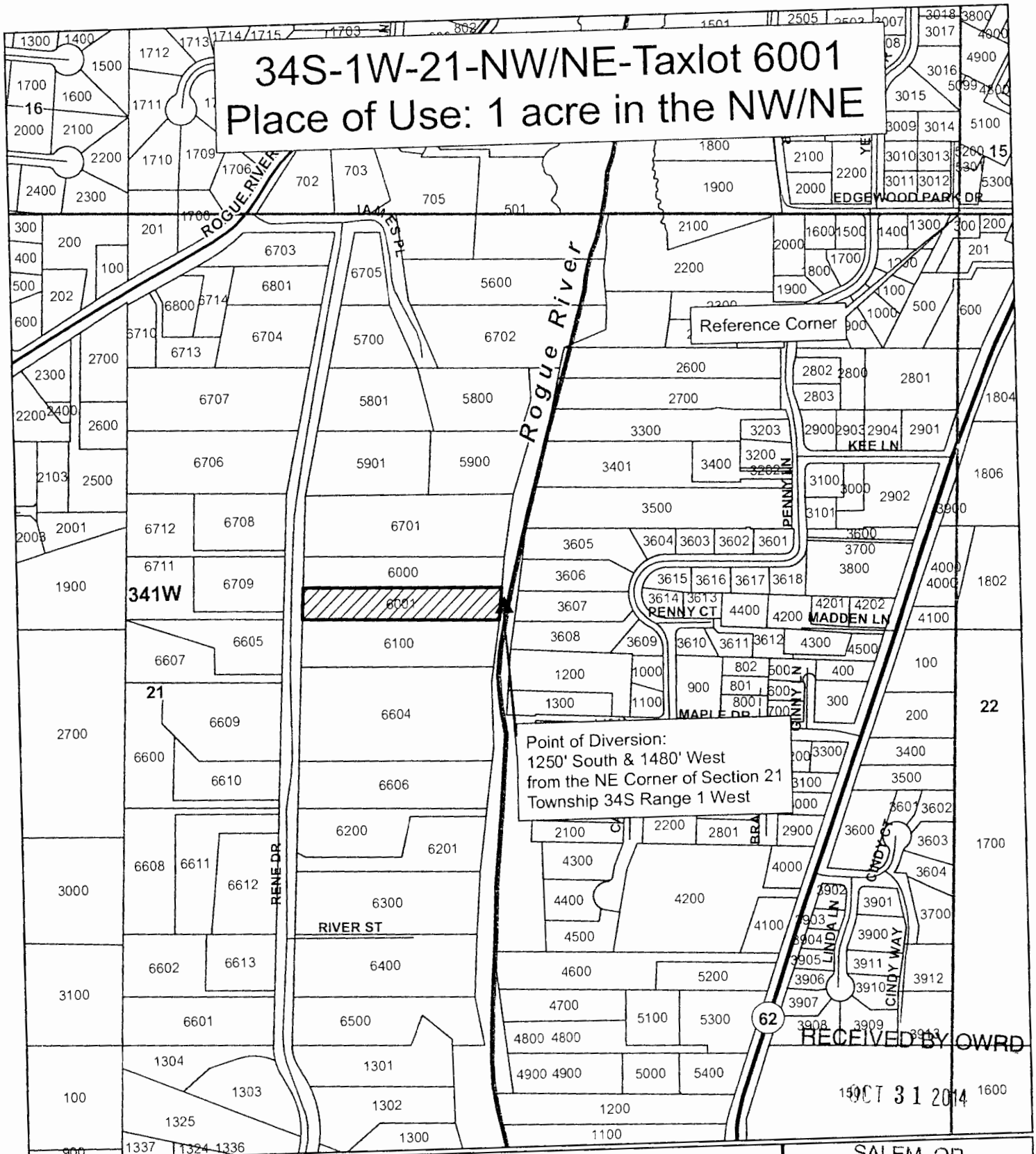


34S-1W-21-NW/NE-Taxlot 6001

Place of Use: 1 acre in the NW/NE

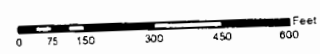


Point of Diversion:
1250' South & 1480' West
from the NE Corner of Section 21
Township 34S Range 1 West

Legend

- ▲ Point of Diversion
- ▨ Place of Use
- Taxlot 6001
- Taxlots
- ▭ Townships
- ▭ Sections

1 inch = 400 feet



SALEM, OR
JACKSON COUNTY
WATERMASTER

Prepared by Travis Kelly
This map is based on a digital database compiled by Jackson County from a variety of sources. Jackson County cannot accept responsibility for errors, omissions, or positional accuracy. There are no warranties, expressed or implied.
Date: 07/29/2014 34S-1W-21-NW/NE Taxlot 6001.mxd kefk

OCT 14 2014

S-88029

SALEM, OR

RECEIVED BY OWRD
OCT 31 2014