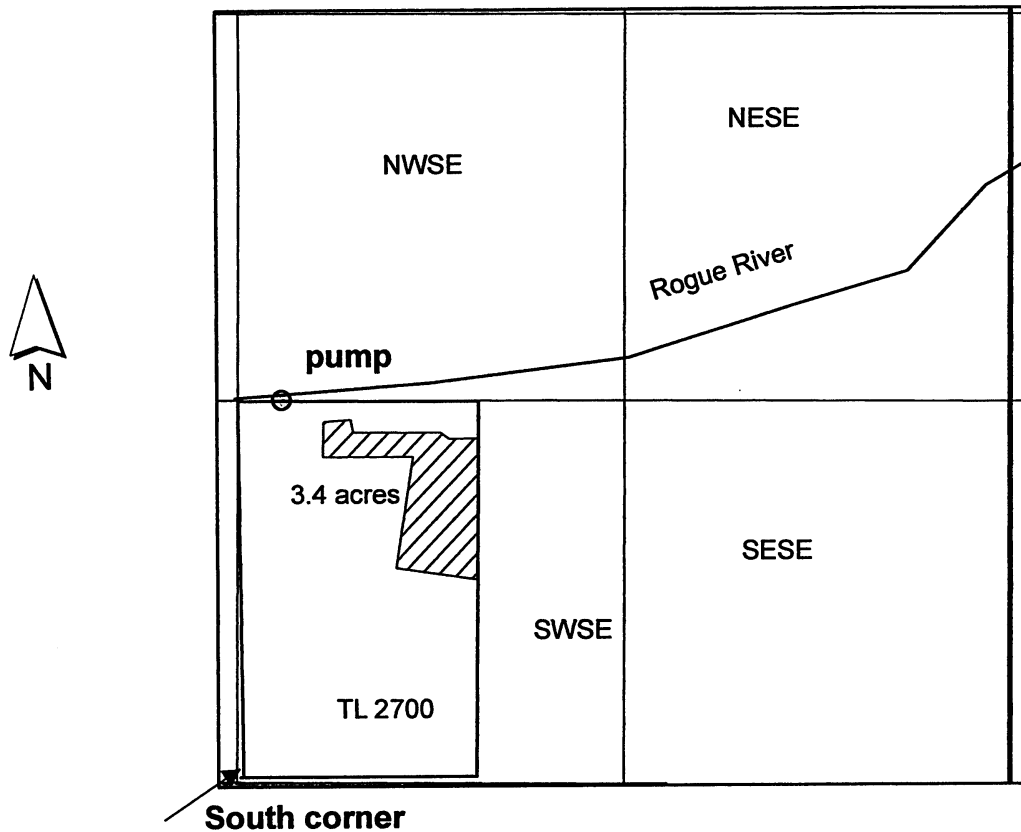


# T35S R7W Southeast Quarter Section 35



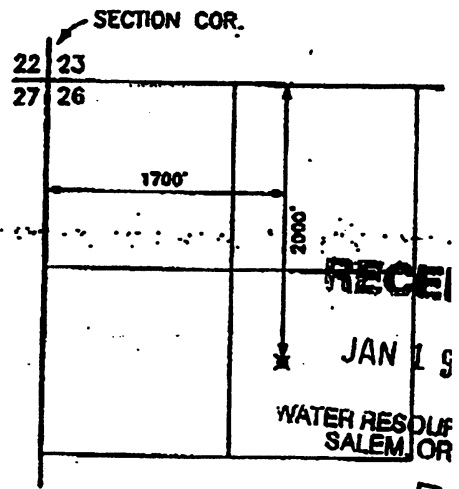
1 inch = 660 feet

Pump (POD) is located 142 ft east and 1298 ft north of south corner of Section 35.

RECEIVED BY OWRD

JAN 28 2016

SALEM, OR



LOST CREEK RESERVOIR  
POINT OF DIVERSION

T.35S., R.1E., W.4E.

SCALE 1" = 1320'

WATER

S-88172