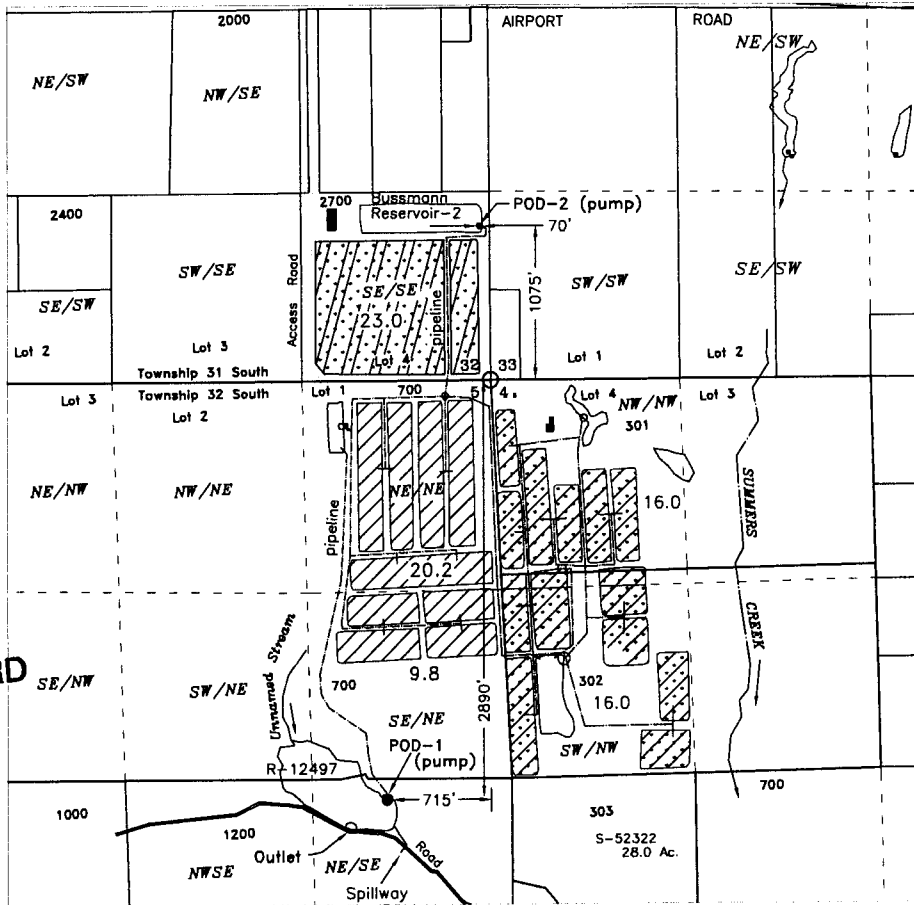


APPLICATION TO STORE & USE WATER

IN THE NAME OF: BUSSMANN CRANBERRIES. LLC

TOWNSHIP 31 & 32 SOUTH, RANGE 15 WEST, W.M.
CURRY COUNTY OREGON



RECEIVED BY OWRD

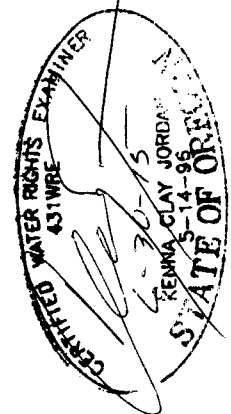
MAR 11 2015

SALEM, OR

RECEIVED BY OWRD

JAN 27 2016

SALEM, OR

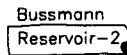


POD-1



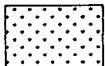
Bussmann Reservoir (R-12497)
(Existing)

POD-2



Bussmann Reservoir-2

ALTERNATE REVIEW APPLICATION
STORAGE -100 ACRE-FEET
Filled from runoff including bog runoff



SUPPLEMENTAL CRANBERRY OPERATIONS
55 ACRES



CRANBERRY OPERATIONS - 23 ACRES

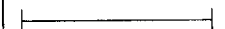


SUPPLEMENTAL CRANBERRY OPERATIONS
62 ACRES

NORTH

Scale

1 inch = 1320 feet



BUSSMANN CRANBERRIES, INC
P.O. BOX 312
SIXES, OR 97476

BASE MAP:

2005 FSA and 8/15/2014 Oregon Map aerial photos
over County GIS tax lots for assumed best fit

This map is not intended to provide
legal dimensions or locations of
property ownership lines

JORDAN ENGINEERING
460 JORDAN LANE
ROSEBURG, OR 97471
(541) 673-1931

Rev. 1/22/2015 n.e.d.

S-00171