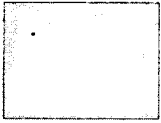


T4S R3W SECTION 29, 30, 32 YAMHILL COUNTY W.M.
 Revised map for application S- 88187

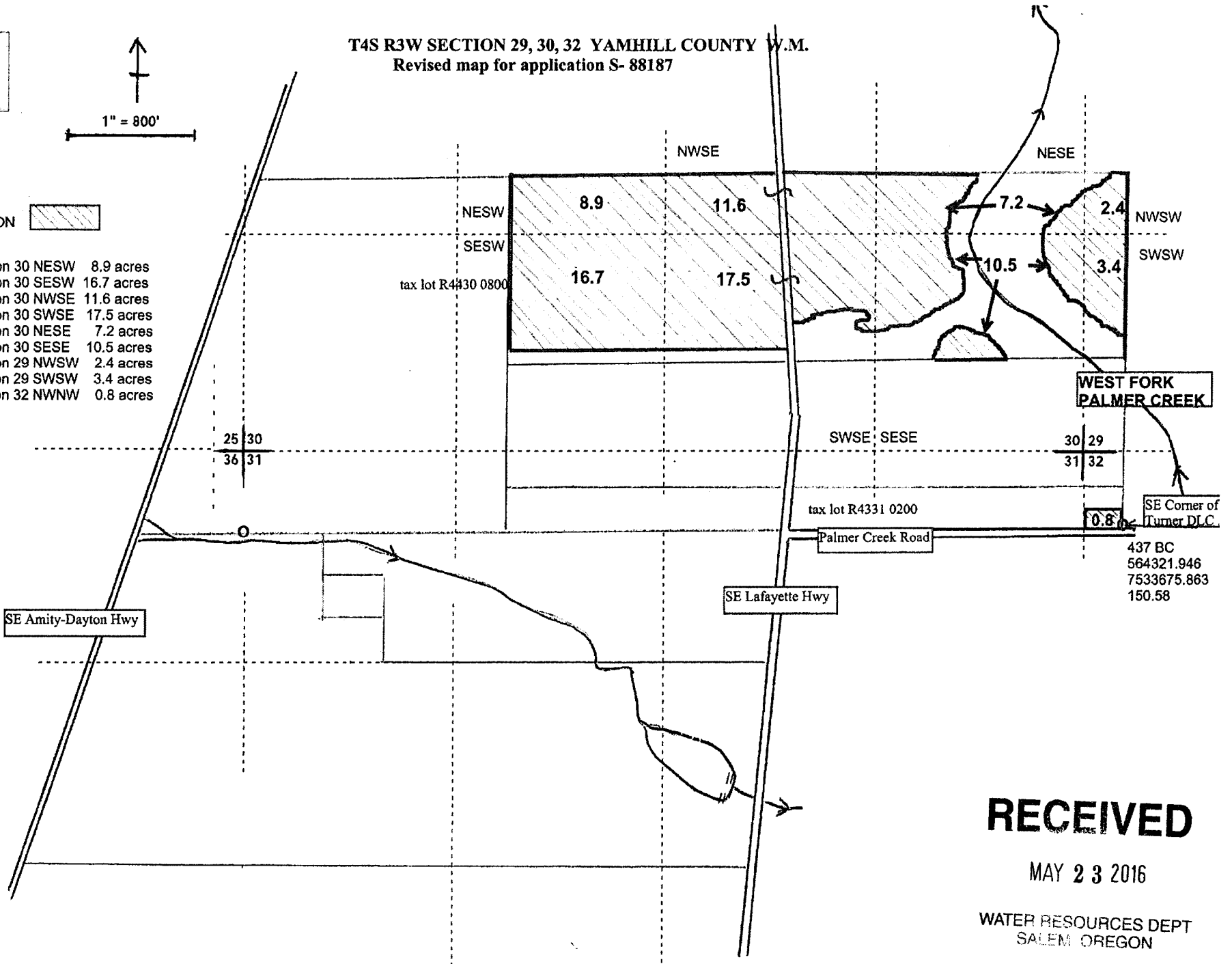


1" = 800'

PRIMARY IRRIGATION



- 4S3W Section 30 NESW 8.9 acres
- 4S3W Section 30 SESW 16.7 acres
- 4S3W Section 30 NWSE 11.6 acres
- 4S3W Section 30 SWSE 17.5 acres
- 4S3W Section 30 NESE 7.2 acres
- 4S3W Section 30 SESE 10.5 acres
- 4S3W Section 29 NWSW 2.4 acres
- 4S3W Section 29 SWSW 3.4 acres
- 4S3W Section 32 NWNW 0.8 acres



WEST FORK PALMER CREEK

SE Corner of Turner D.L.C.

437 BC
 564321.946
 7533675.863
 150.58

RECEIVED

MAY 23 2016

WATER RESOURCES DEPT
 SALEM OREGON

superseding
 S-88187

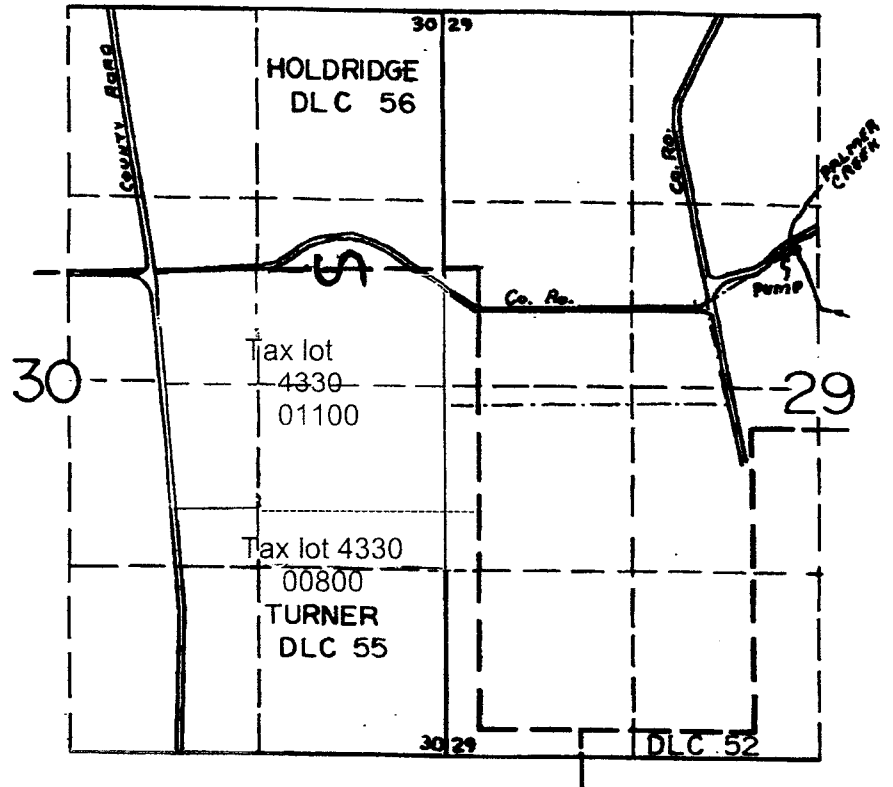
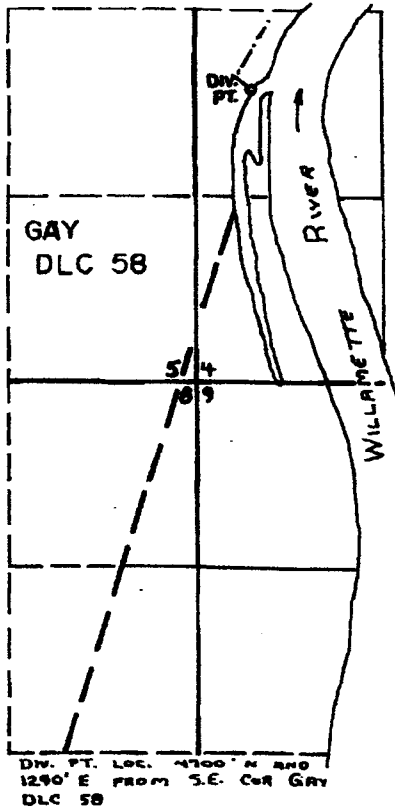
RECEIVED

FEB 29 2016

WATER RESOURCES DEPT
SALEM, OREGON

T.6S., R.3W., W.M.

T.4S., R.3W., W.M.



IN NAME OF
PALMER CREEK WATER DISTRICT
IMPROVEMENT COMPANY

Surveyed JUNE 12 1974, by L. Toll

amended January 19, 2016

DFQ-2LL-12
DFQ-2LL-223

5-88187