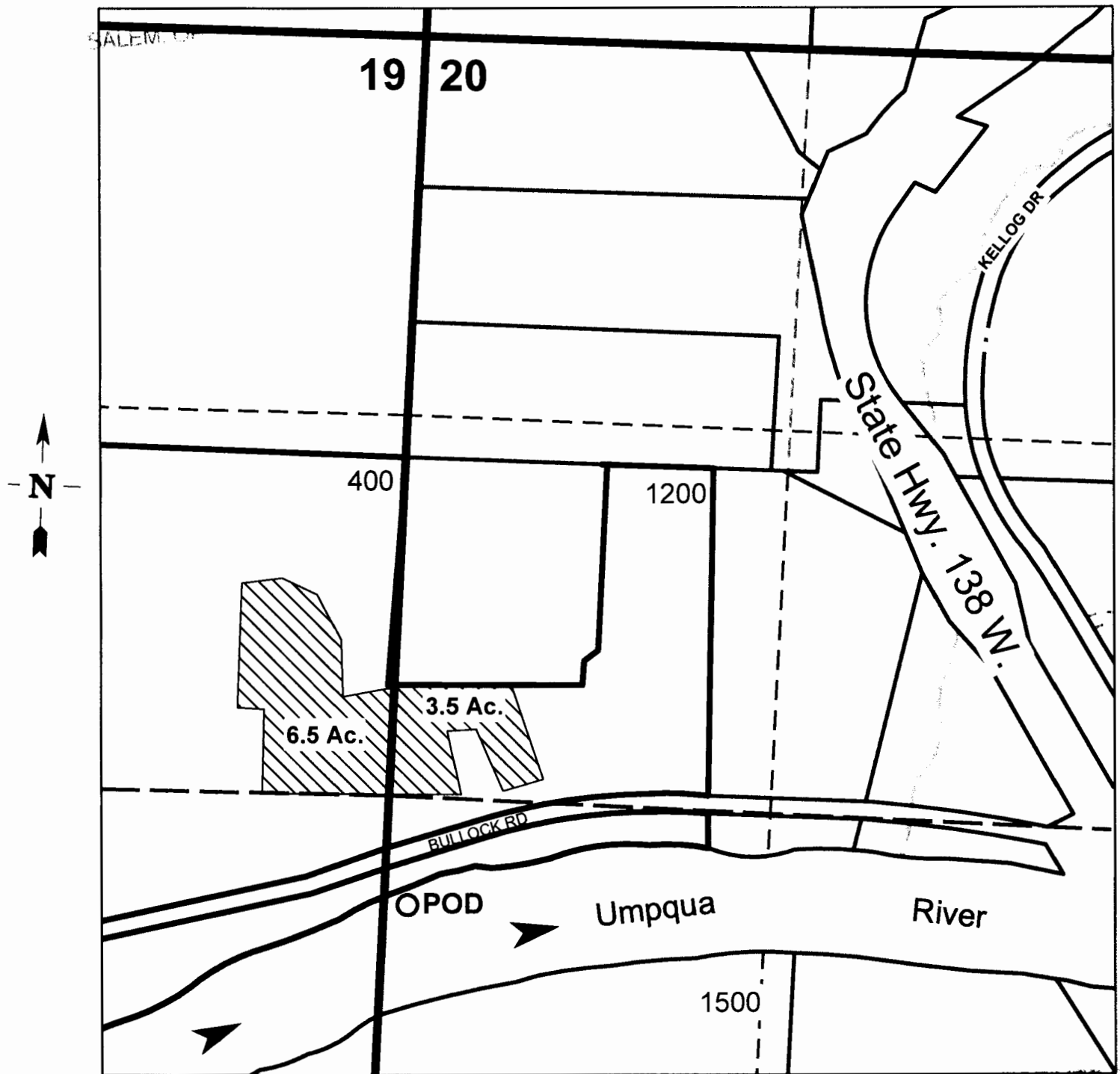


Limited Water use License Application Map
Atterrage LLC
T. 23S. R. 7W., Sections 19 and 20 W.M.
Douglas County
Scale: 1" = 500'

RECEIVED BY CWR

JUN 03 2014



Point of Diversion is 3,000 ft. south and 80 ft. east from the northwest quarter corner of Section 20.

5-88279

RECEIVED BY CWR

JUN 23 2014

SALEM OR