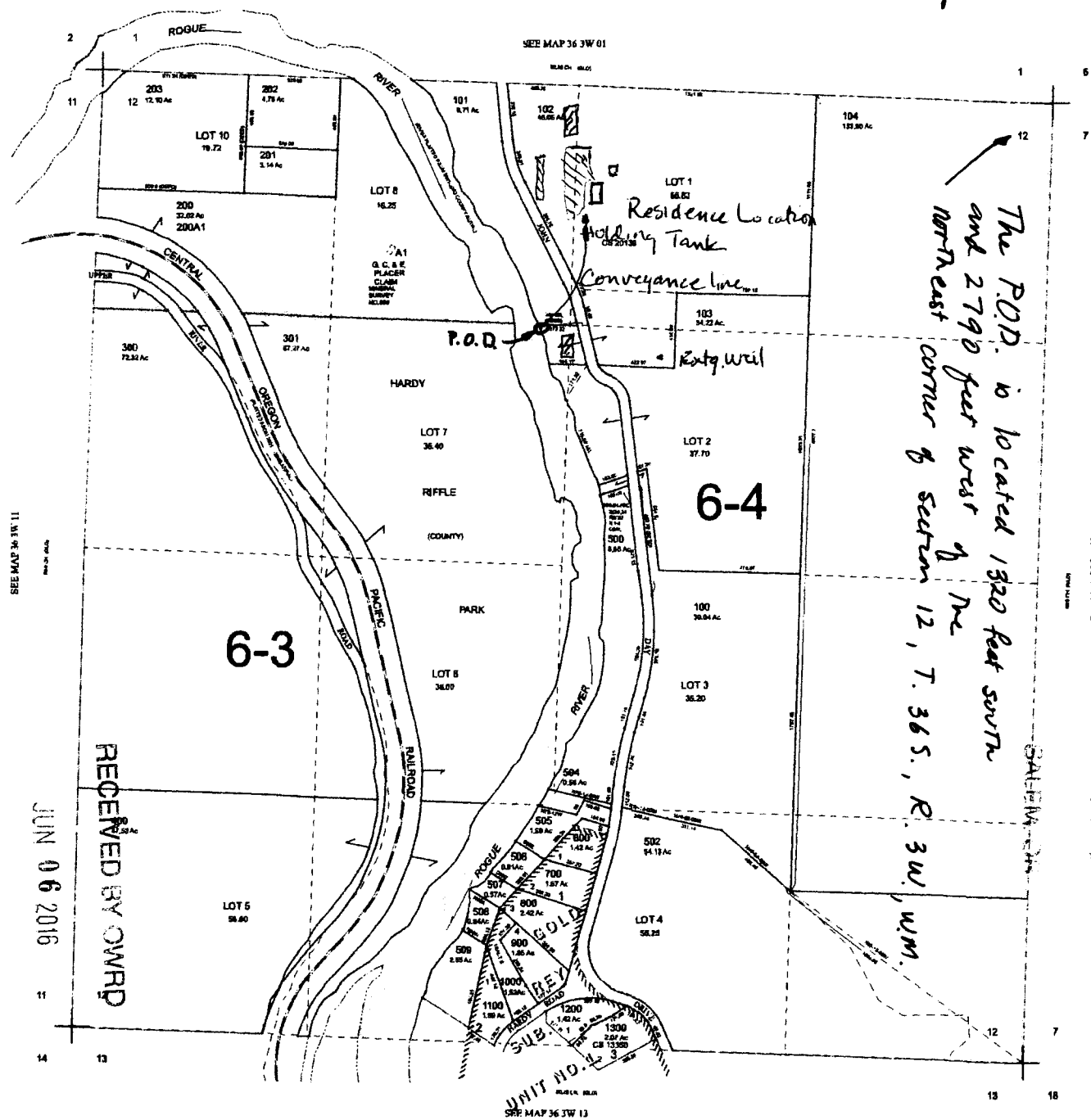


P-88241

FOR ASSESSMENT AND TAXATION ONLY

SECTION 12, T.36S., R.3W., W.M. JACKSON COUNTY 1" = 400'

36 3W 12



CANCELLED TAX LOT NUMBERS: 503 ADDED TO 103 510

Property Location Map

03 02 2016 2:15 PM

MAY 23 2016

RECEIVED BY OWRD

36 3W 12

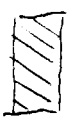
NEW MAP FEBRUARY 23, 2007 REV. FEBRUARY 16, 2009

Area of Use:

- 1/2 Ac in NW of NE
 - 3/4 Ac in NE of NW
 - 1/4 Ac in SW of NE
- } all on T.L. 102



Future Irrigated Area



Extg. Irrigated Area

SALEM, OR

JUN 06 2016

RECEIVED BY OWRD