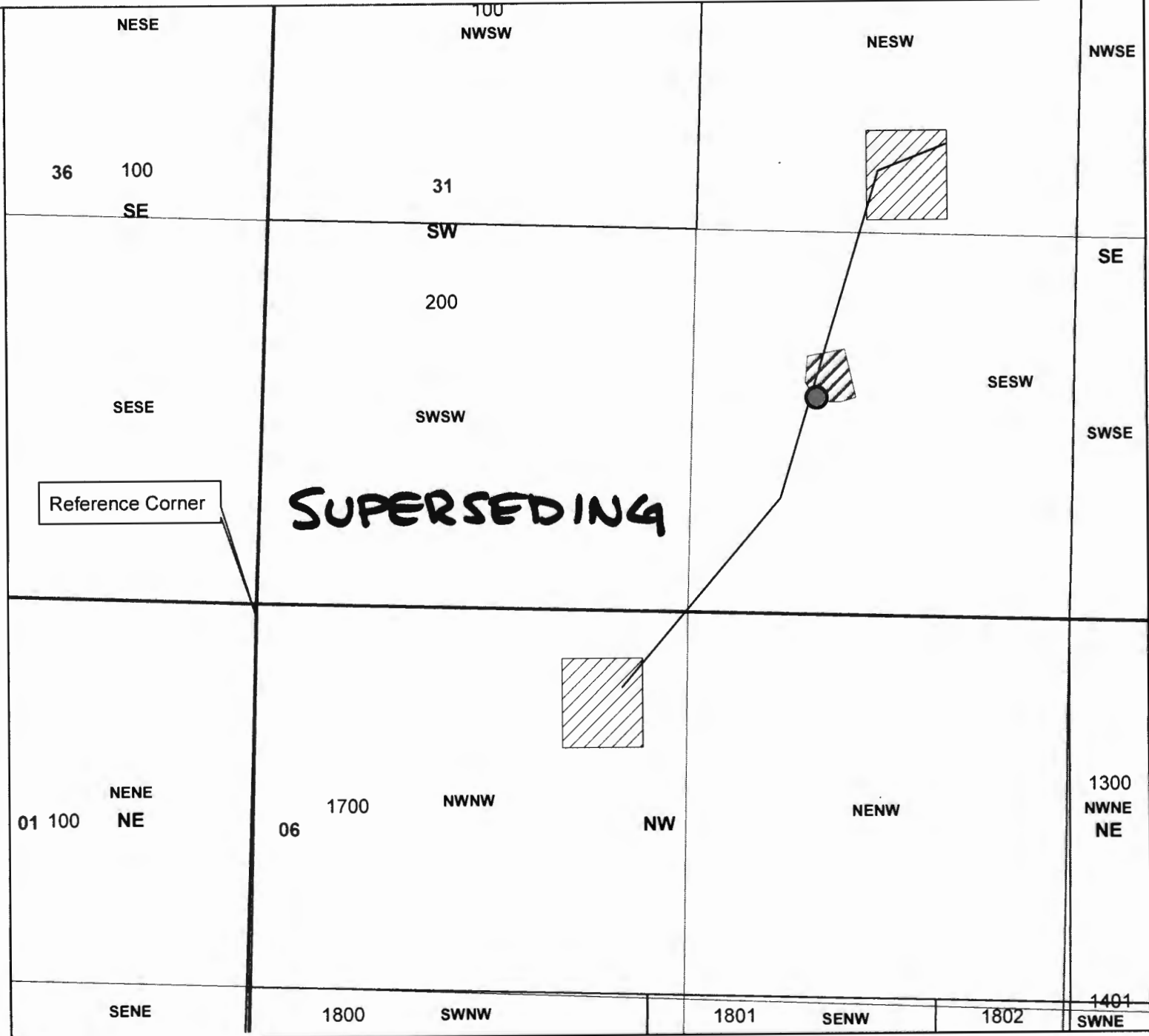


Noah Levine Surface Water Application Map for the Use of 1.73 Acre/Feet of Stored Water in Squirrel Pond (Certificate # 86589)

Proposed Place of Use:
 38S-2W-31-Tax Lot 200
 -NE/SW: 2 Acres of Nursery/Irrigation
 39S-2W-6-Tax Lot 1700
 -NW/NW: 2 Acres of Nursery/Irrigation

NE
SWNE



- Legend**
- TL 1700
 - TL 200
 - Place of Use
 - Sections
 - Quarter Sections
 - Quarter Quarter Sections

● POD is 1944 ft East and
 732 ft North from SW Corner
 Section 31

Squirrel Pond

1 inch = 500 feet



**JACKSON COUNTY
 WATERMASTER**

Prepared by Shavon Haynes

This map is based on a digital database compiled by Jackson County from a variety of sources. Jackson County cannot accept responsibility for errors, omissions, or positional accuracy. There are no warranties, expressed or implied.