

Water Right Application Map (Primary and Supplemental Irrigation from Galesville Reservoir)

Cow Creek Band of Umpqua Tribe of Indians

Sections 20, 21, 28, and 29, T28S-R6W

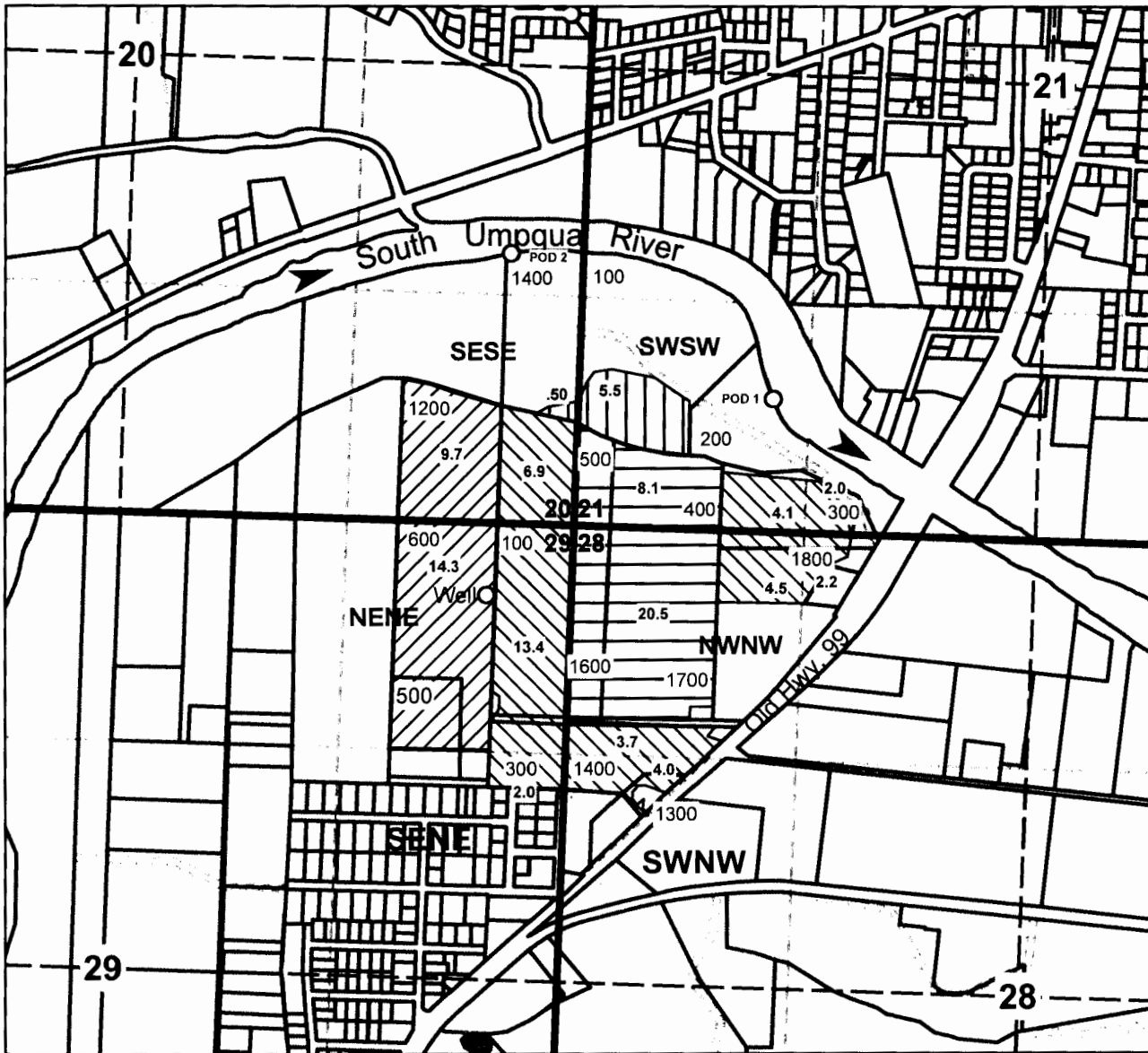
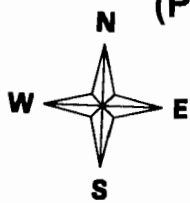
Douglas County

Scale: 1" = 1000'

RECEIVED BY OWRI

APR 09 2015

SALEM, OR



- Supplemental Galesville Reservoir to Permit 28612- 28.6 acres
- Supplemental Galesville Reservoir to Permit 46774 - 42.8 acres
- Primary Galesville Reservoir - 24.0 acres - Supplemental G-3484
- Primary Galesville Reservoir - 6.0 acres

POD 1 is located 3430 ft. North and 1120 ft. East from the West quarter corner of Section 28.

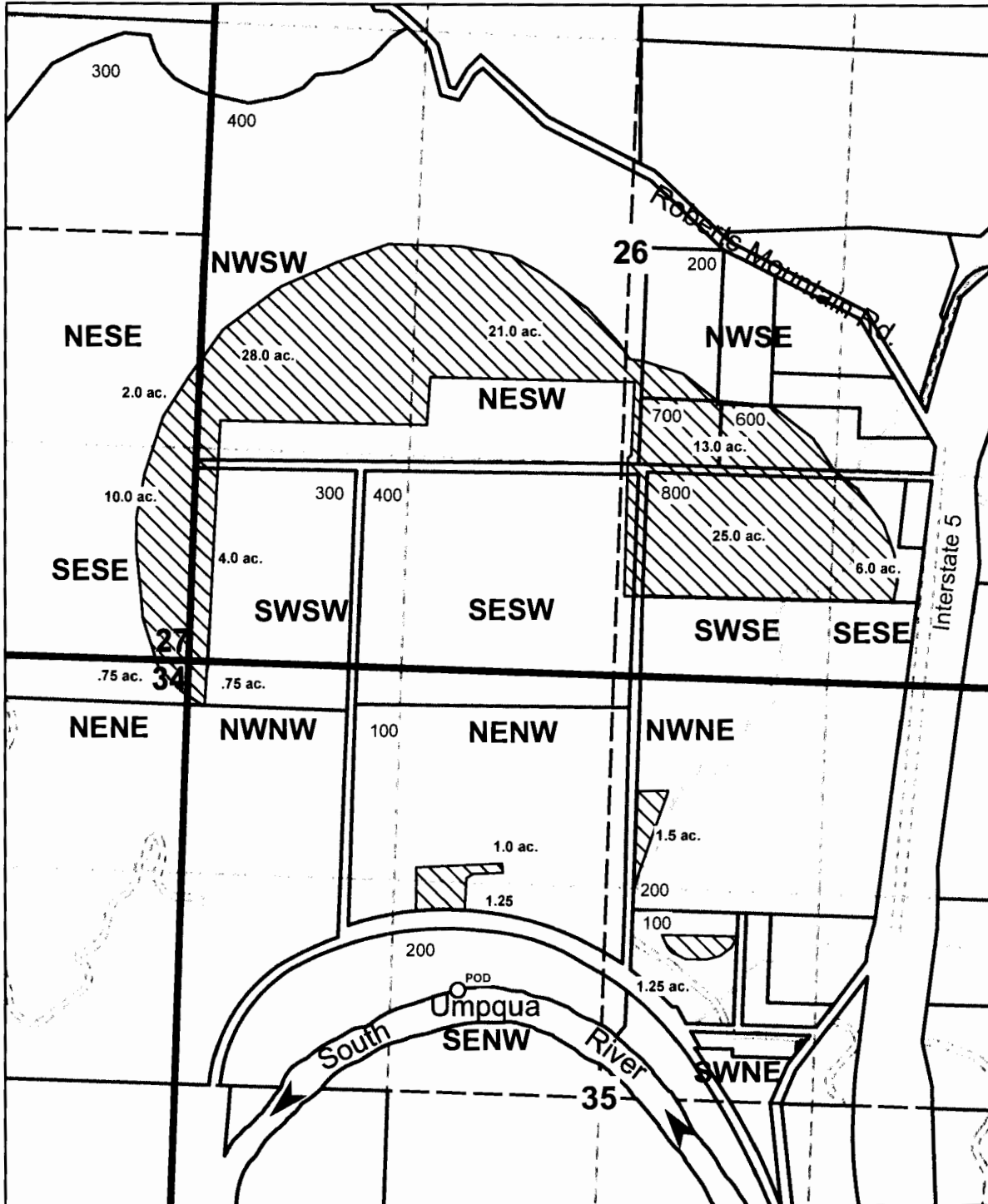
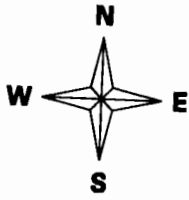
POD 2 is located 1550 ft. North and 450 ft. West from the Southeast corner of Section 20.

POA (Well - G-3484) is located 2260 ft. North and 440 ft. West from the East quarter corner of Section 29.

S-8807

Water Right Application Map
Cow Creek Band of Umpqua Tribe of Indians
(Primary Irrigation from Galesville Reservoir)
Sections 26, 27, 34 and 35, T28S-R6W
Douglas County
Scale 1" = 1000'

RECEIVED BY OWRD
 APR 09 2015
 SALEM, OR



Point of Diversion is 2050 ft. South and 900 ft. West from the North quarter corner of Section 35.

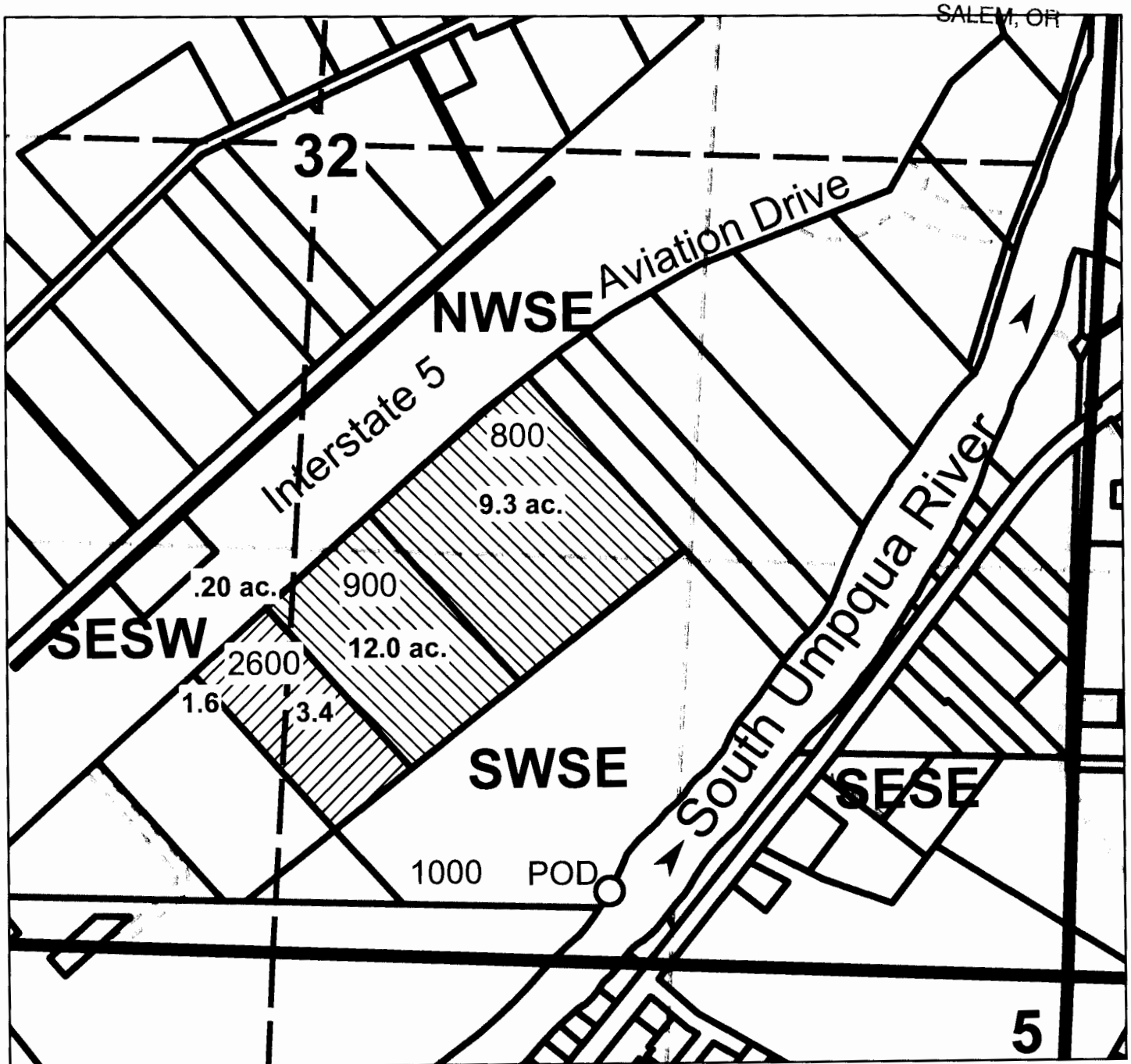
Primary Galesville Reservoir - 115.5 acres

S-8807


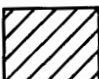
Water Right Application Map
Cow Creek Band of Umpqua Tribe of Indians
Sec. 32, T29S-R5W
Douglas County
Scale 1" = 500'

RECEIVED BY OWRD

APR 09 2015



POD is located 100 ft. north and 960 ft. East from the south quarter corner of Section 32.

Primary Galesville Reservoir - 21.5 acres 
 Supplemental Galesville Reservoir to Permit 48679 - 5 acres 

P-0007

**Water Right Application Map
 (Supplemental Irrigation from Galesville Reservoir)
 Cow Creek Band of Umpqua Tribe of Indians**

Section 7, T29S-R5W

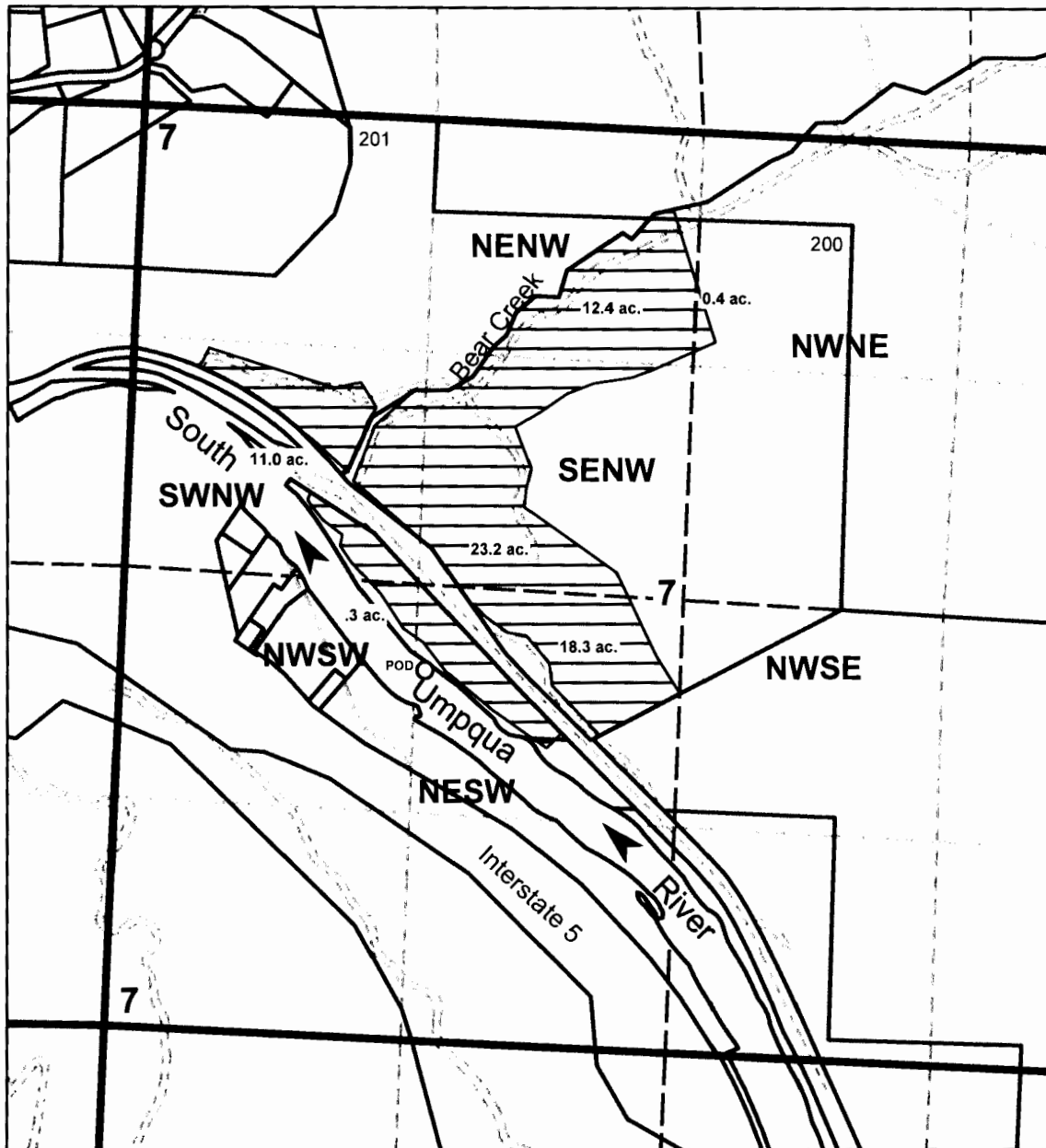
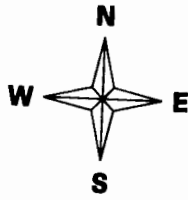
Douglas County

Scale 1" = 1000'

RECEIVED BY OWRD

APR 09 2015

SALEM, OR



POD is 400 ft. South and 1300 ft. West from the center of Section 7.

**Primary South Umpqua River Permit 34537 (65.6 acres)
 Supplemental Irrigation Galesville Reservoir (65.5 acres)**

S-88071

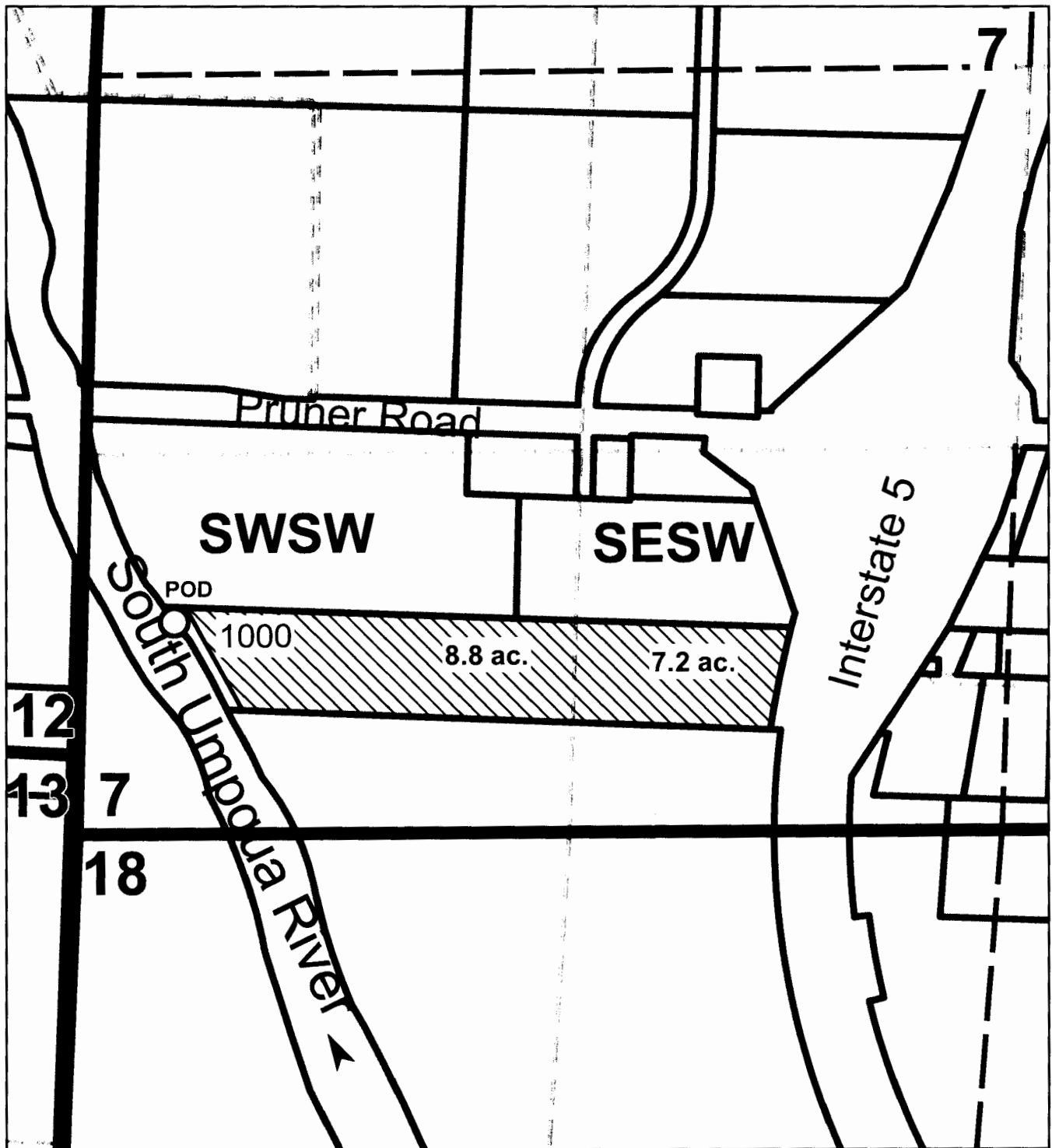


Water Right Application Map
(Supplemental Irrigation from Galesville Reservoir)
Cow Creek Band of Umpqua Tribe of Indians
SW 1/4 of Section 7, T30S-R5W
Douglas County
Scale: 1" - 500'

RECEIVED BY OWRD

APR 09 2015

SALEM, OR



**Point of Diversion is 1760 Ft. South and 250 ft. East
from the West 1/4 corner of Section 7.**

Primary South Umpqua Permit #49872 - Certificate #68634 (16 acres)

P-88071