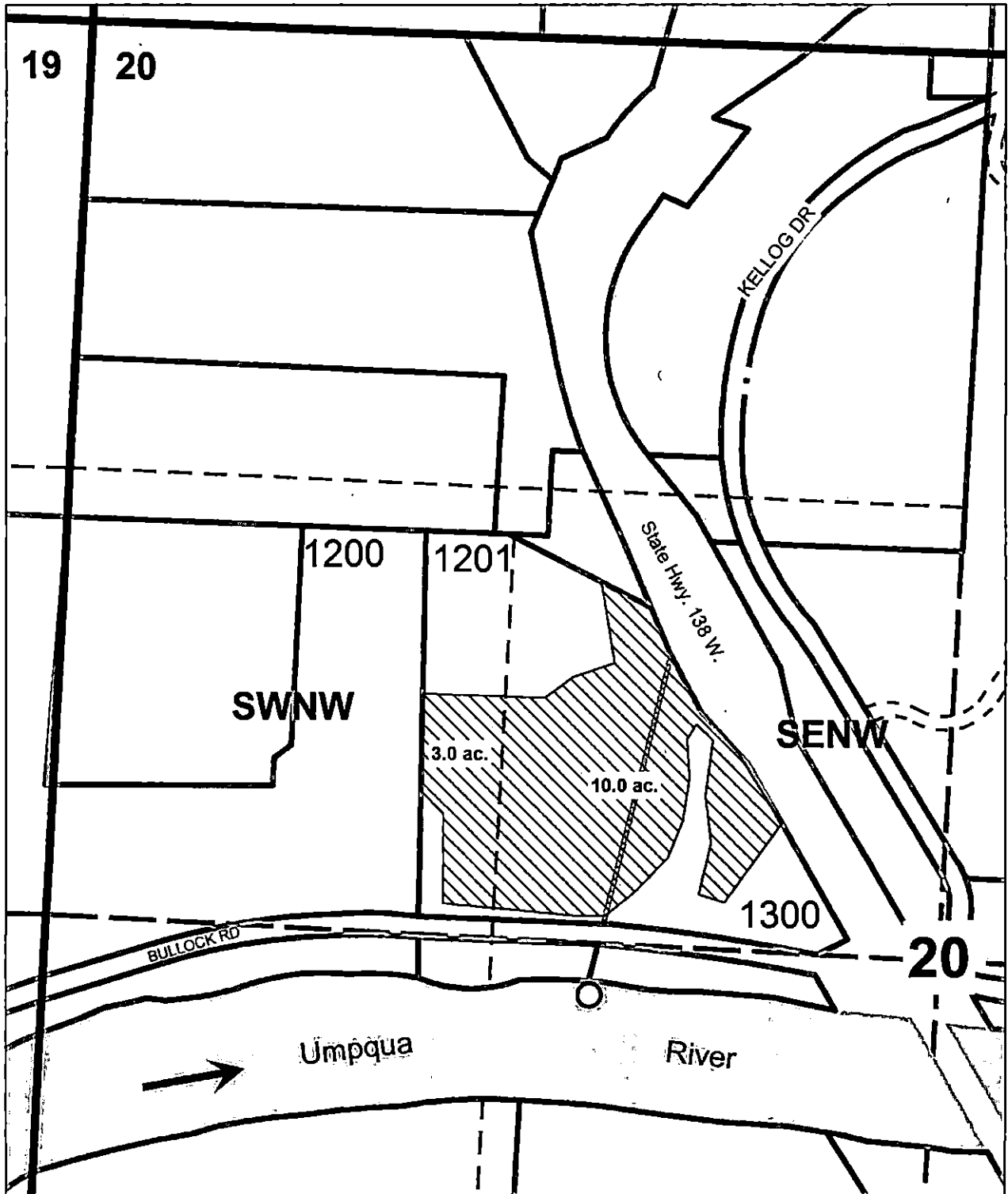
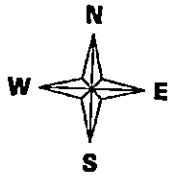


RECEIVED

MAY 08 2017

OWRD

NW 1/4 Section 23. T.23S. R.7W. W.M.
Application Map
Brian and Kristina Cooper
Douglas County
Scale 1" = 400'



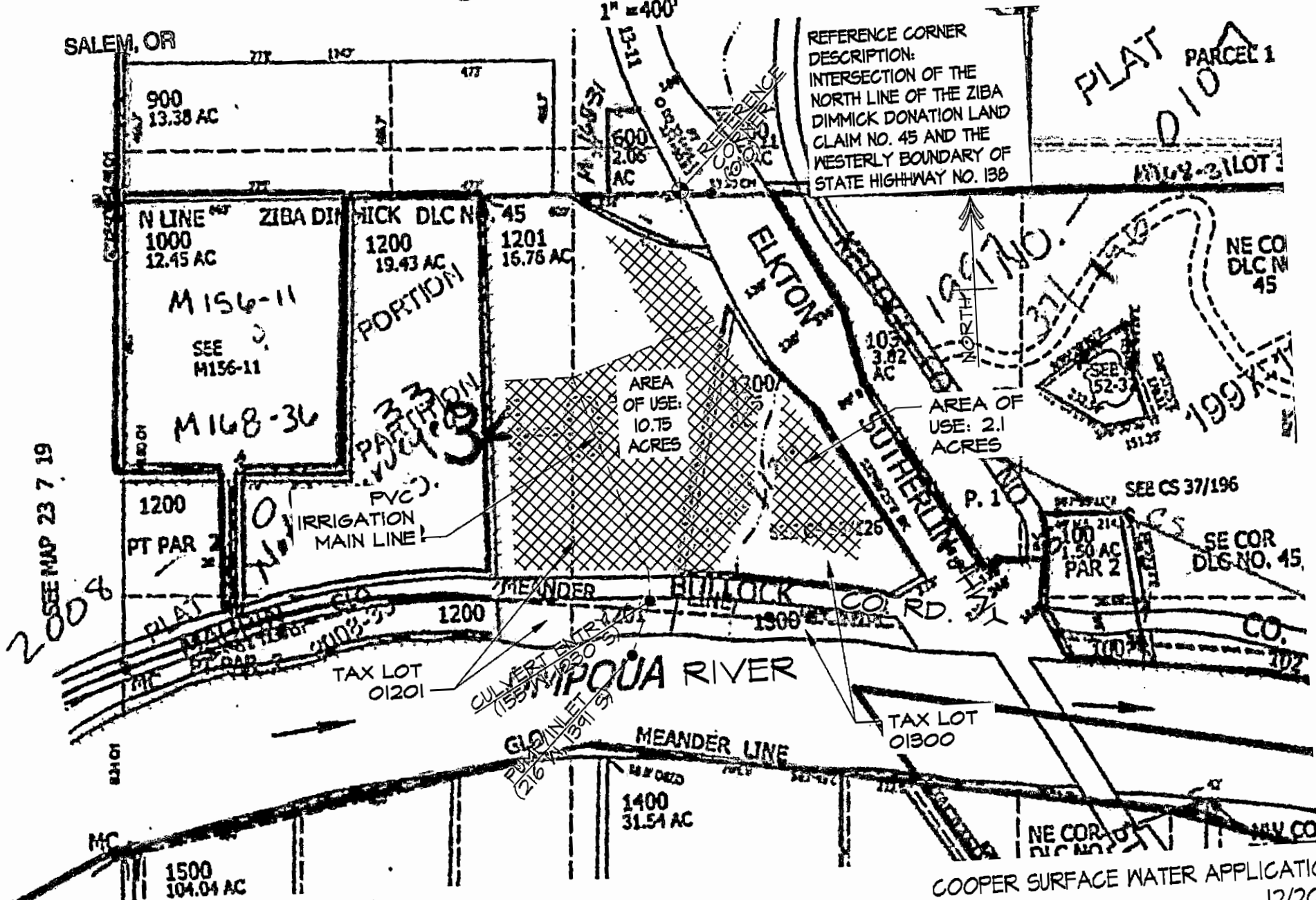
POD is 170 ft. South and 1030 ft. West from the center of Section 20.

S-88407

RECEIVED BY OWRD

MAY 05 2017

SEC.20 T.23S. R.7W. W.M. DOUGLAS COUNTY



SEE MAP 23 7 19
2008

2009

IRRIGATION PLAN

SCALE: 1" = 400'-0"

88407