

RECEIVED

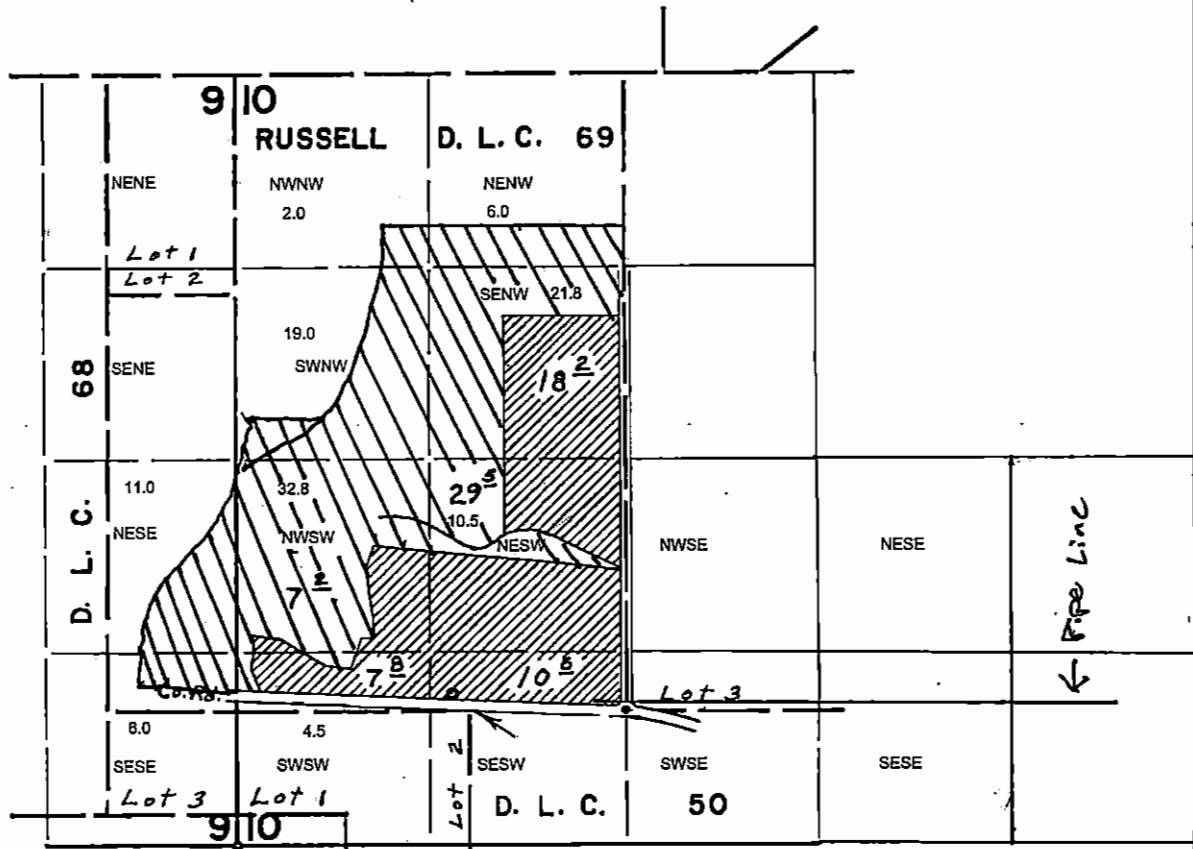
MAR 09 2017


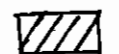
OWRD



T. 10 S. R. 4 W. W. M.

Tax Lot 200, 500, 600, 605
1" = 1320'



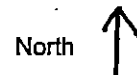
-  113.6 Acres Primary Irrigation
-  73.3 Acres Supplemental Irrigation to Certificate 36961

R Bryan Webber 3-6-17

RECEIVED

MAR 09 2017

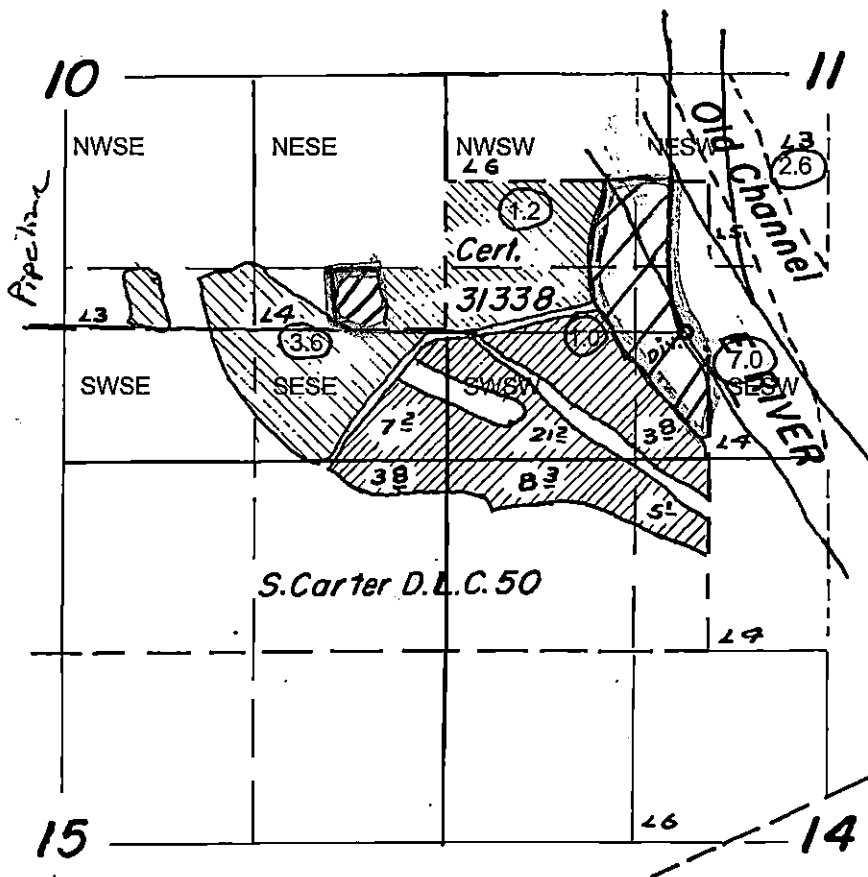
OWRD



T.10S.R.4W.W.M.

1" = 1320

Tax Lots 200, 202, 500 & 600



Point of Diversion: 120' feet South and 4240' feet East from SE Corner, Russel DLC-69



15.4 acres primary irrigation

FINAL PROOF SURVEY
UNDER

Application No. 34546 Permit No. 27126
IN NAME OF

Kenneth Holmes

Surveyed July 17, 1964, by Floyd L. Sigmund

R Bryan Webber 3-6-17

S-88401