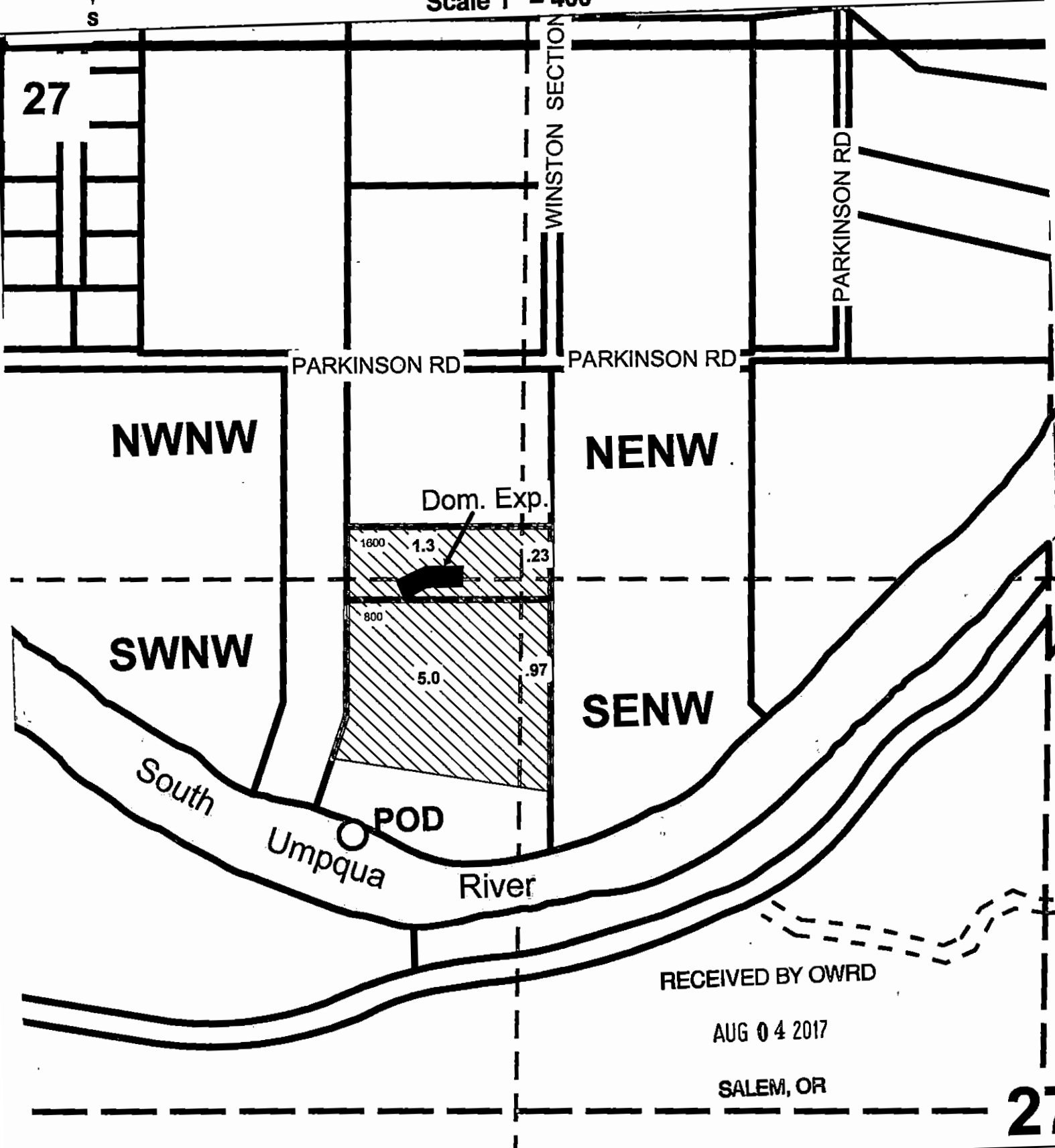
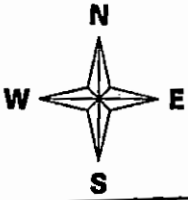


Application Map
Jeremy and Melissa Smith
NW1/4 Sec.27 T.28S. R.6W. W.M.
Douglas County
Scale 1" = 400'



RECEIVED BY OWRD

AUG 04 2017

SALEM, OR

27

Point of Diversion is 1,950 ft. South and 900 ft. East from the NW Corner of Section 27

S-88436