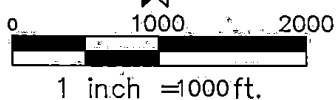


5-08472



SURFACE WATER IRRIGATION APPLICATION

SECTION 8, T 1 N, R 2 W, W.M.
WASHINGTON COUNTY, OR

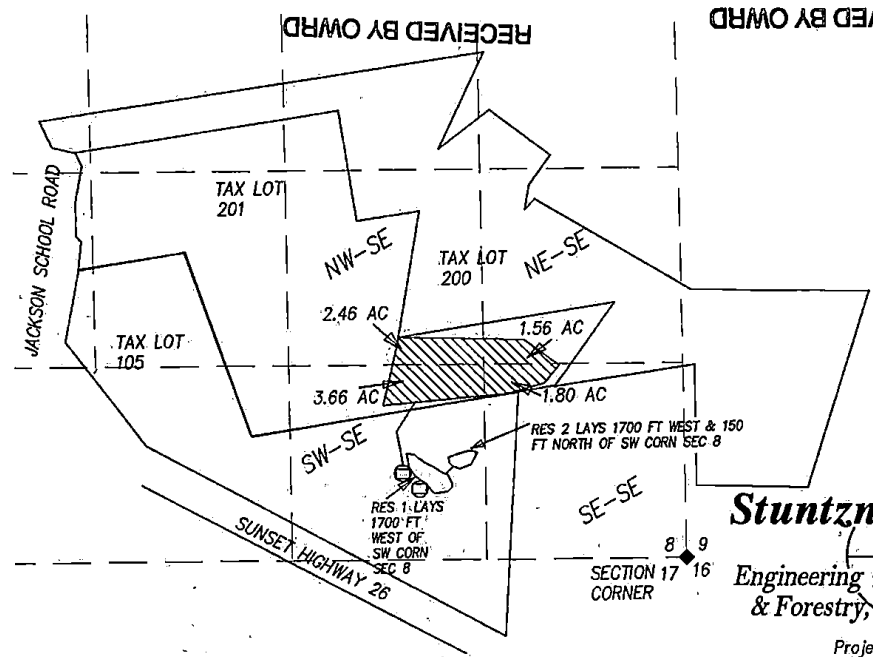
PREPARED FOR:
MOTZ FARM PROPERTIES LLC
11445 NW SKYLINE BLVD
PORTLAND, OR 97231

SALEM, OR
OCT 30 2017

SALEM, OR
OCT 30 2017
RECEIVED BY OWRD

LEGEND

- MAIN IRRIGATION PIPES
- APPROX. TAX LOT LINE
- 1/16TH SECTION LINE
- DLC LINE
- PLACE OF USE
- SECTION CORNER
- DITCH
- PTO PUMP



MAP BASES: WASHINGTON COUNTY TAX MAP TIN R2W SEC. 08
2016 AERIAL PHOTO FROM GOOGLE EARTH

THIS MAP WAS PREPARED FOR THE PURPOSE OF IDENTIFYING THE LOCATION OF A WATER RIGHT ONLY AND IS NOT INTENDED TO PROVIDE LEGAL DIMENSIONS OR LOCATION OF PROPERTY OWNERSHIP LINES.

Stuntzner
Engineering & Forestry, LLC

Project: 312-049
By: Jeffrey Kee
Date: OCT 18, 2017
MAP: COBU_B