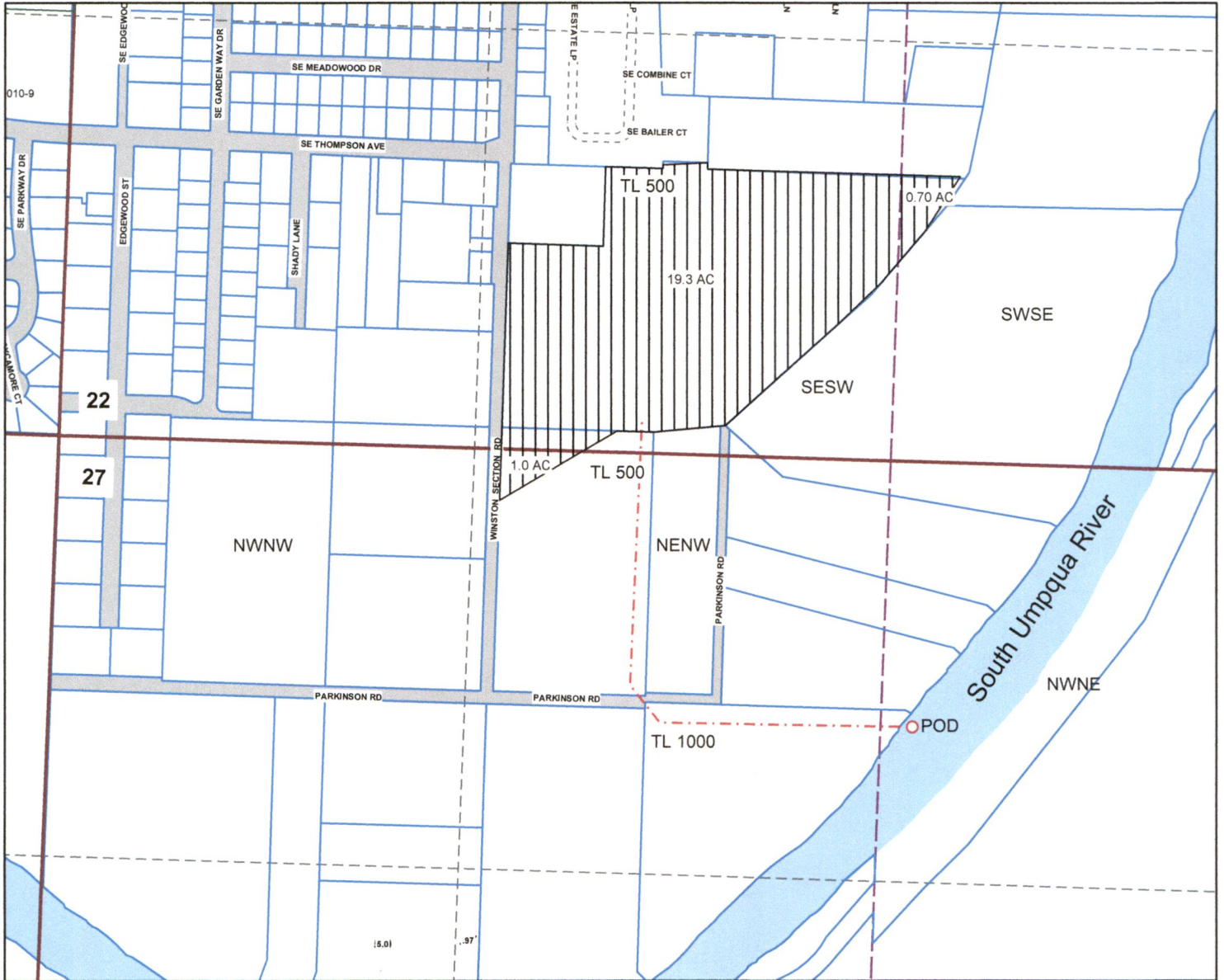




**Application Map
Morton Banks
T.28S. R.6W. Sections 22 and 27
Douglas County
Scale 1" = 500'**



**Point of Diversion is 860 ft. South and 85 ft. East from the
North Quarter Section Corner of Section 23.**

↑
227
270
18

RECEIVED

FEB 16 2018

OWRD

S-88574