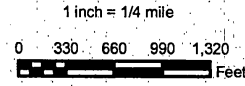
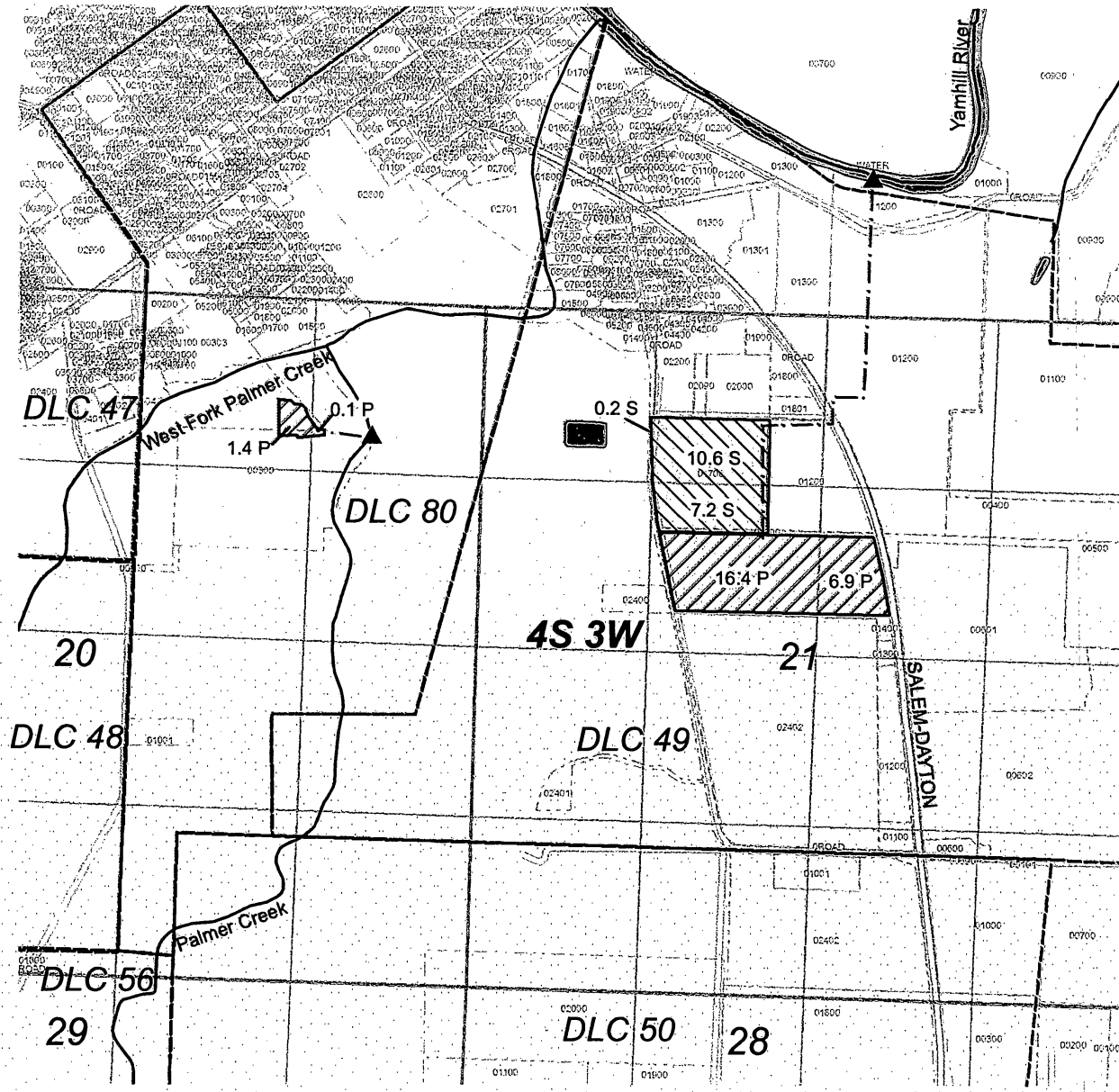


# T4S, R3W, WM, Sections 20 & 21 Yamhill County, Oregon



**Explanation**

- Rediversion
- Rediversion Pipeline
- Water Features
- Roads
- DLC Boundaries
- Tax Lots
- Primary
- Supplemental



NAD 1983 HARN  
Datum of 1983  
Prepared August 28, 2018

Sources: BLM CadNSDI PLSS (GeoCommunicator LSIS, 2015), Oregon Spatial Data Library water features, county lines & tax lots, roads (spatialdata.oregonexplorer.info), Pacific Hydro-Geology, Inc. main canal, point of diversion, DLC lines, et al (shapefiles provided by).

This map was prepared for the purpose of identifying the location of a water right only and is not intended to provide legal dimensions or locations of property ownership lines.

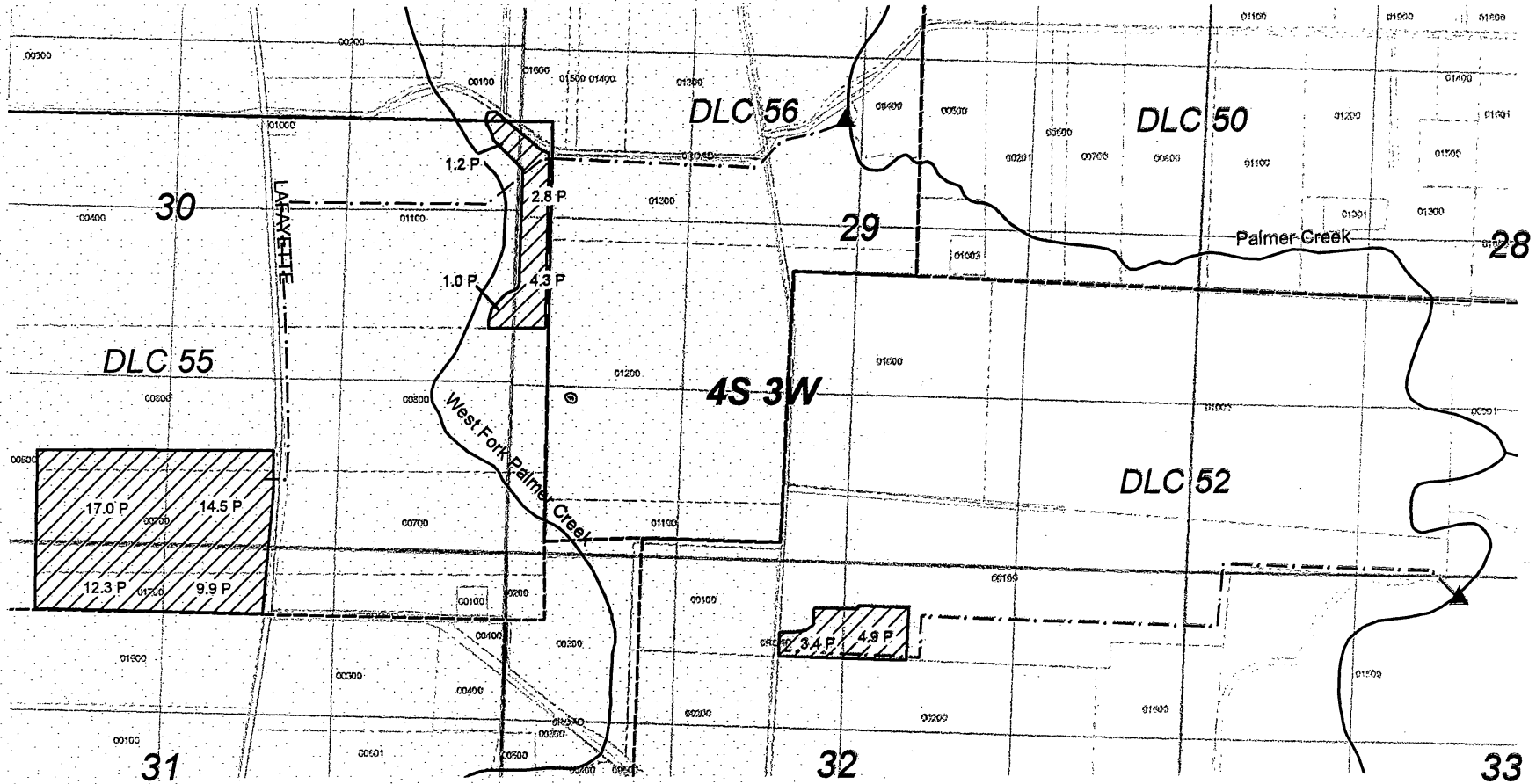
**Water Right Application  
Palmer Creek Water District  
Improvement Company**

**Application Map 1 of 6**

2-88680

P-22222

### T4S, R3W, WM, Sections 30, 31 & 32 Yamhill County, Oregon

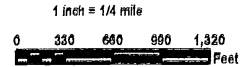


- Explanation**
- ▲ Rediversion
  - Rediversion Pipeline
  - Water Features
  - Roads
  - DLC Boundaries
  - Tax Lots
  - ▨ Primary
  - ▩ Supplemental

NAD 1983 HARN  
Datum of 1983  
Prepared August 28, 2018

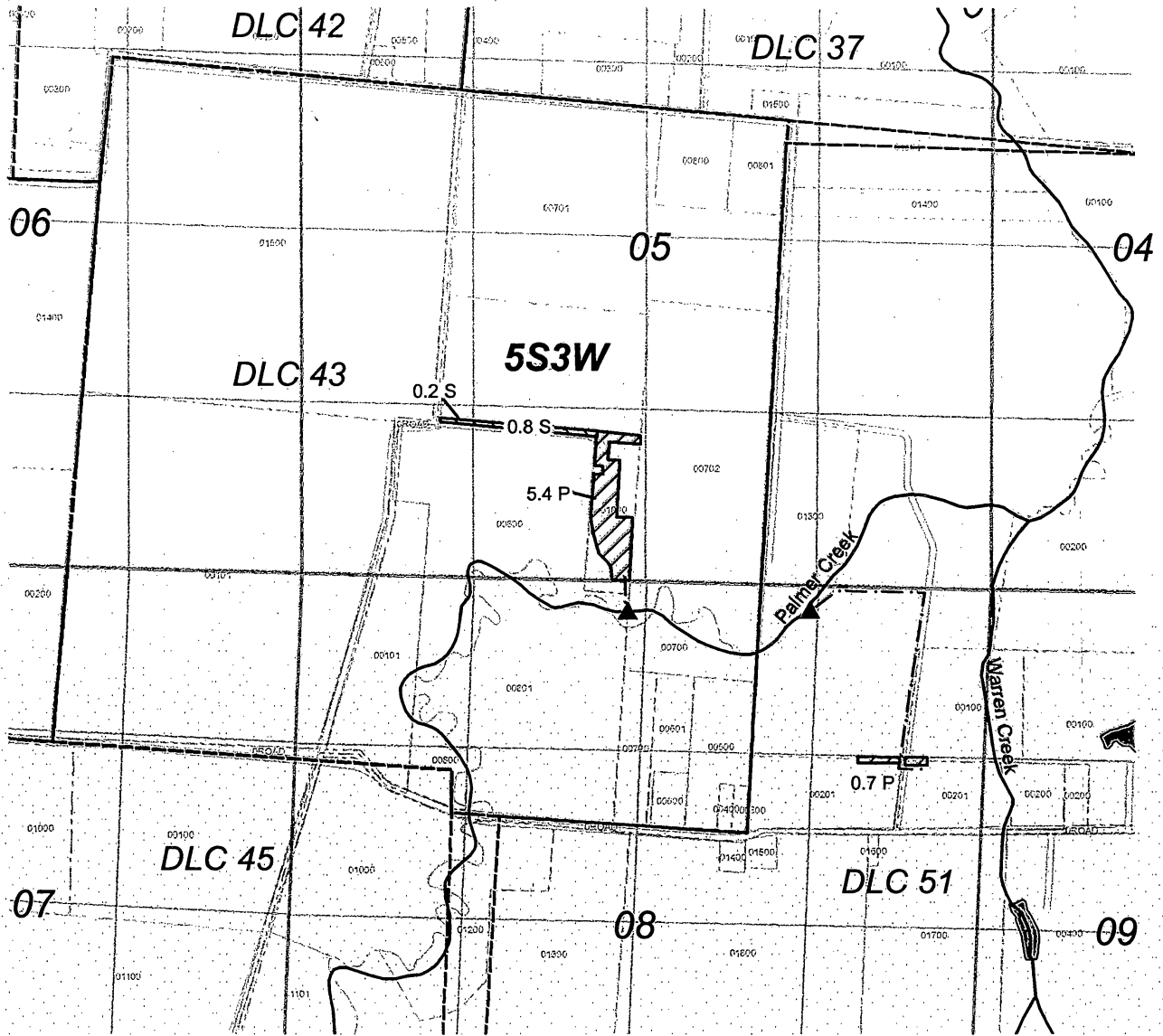
Sources: BLM CadNSDI PLSS  
(GeoCommunicator LSIS, 2015),  
Oregon Spatial Data Library water  
features, county lines & tax lots, roads  
(spatialdata.oregonexplorer.info), Pacific  
Hydro-Geology, Inc. main canal, point of  
diversion, DLC lines, et al (shapefiles  
provided by)

This map was prepared for the purpose  
of identifying the location of a water right  
only and is not intended to provide legal  
dimensions or locations of property

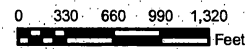


**Water Right Application  
Palmer Creek Water District  
Improvement Company**

T5S, R3W, WM, Sections 5 & 8  
Yamhill County, Oregon



1 inch = 1/4 mile



**Explanation**

- ▲ Rediversion
- Rediversion Pipeline
- Water Features
- Roads
- DLC Boundaries
- Tax Lots
- ▨ Primary
- ▩ Supplemental

NAD 1983 HARN  
Datum of 1983  
Prepared August 28, 2018

Sources: BLM CadNSDI PLSS (GeoCommunicator LSIS, 2015), Oregon Spatial Data Library water features, county lines & tax lots, roads (spatialdata.oregonexplorer.info), Pacific Hydro-Geology, Inc. main canal, point of diversion, DLC lines, et al (shapefiles provided by)

This map was prepared for the purpose of identifying the location of a water right only and is not intended to provide legal dimensions or locations of property ownership lines.

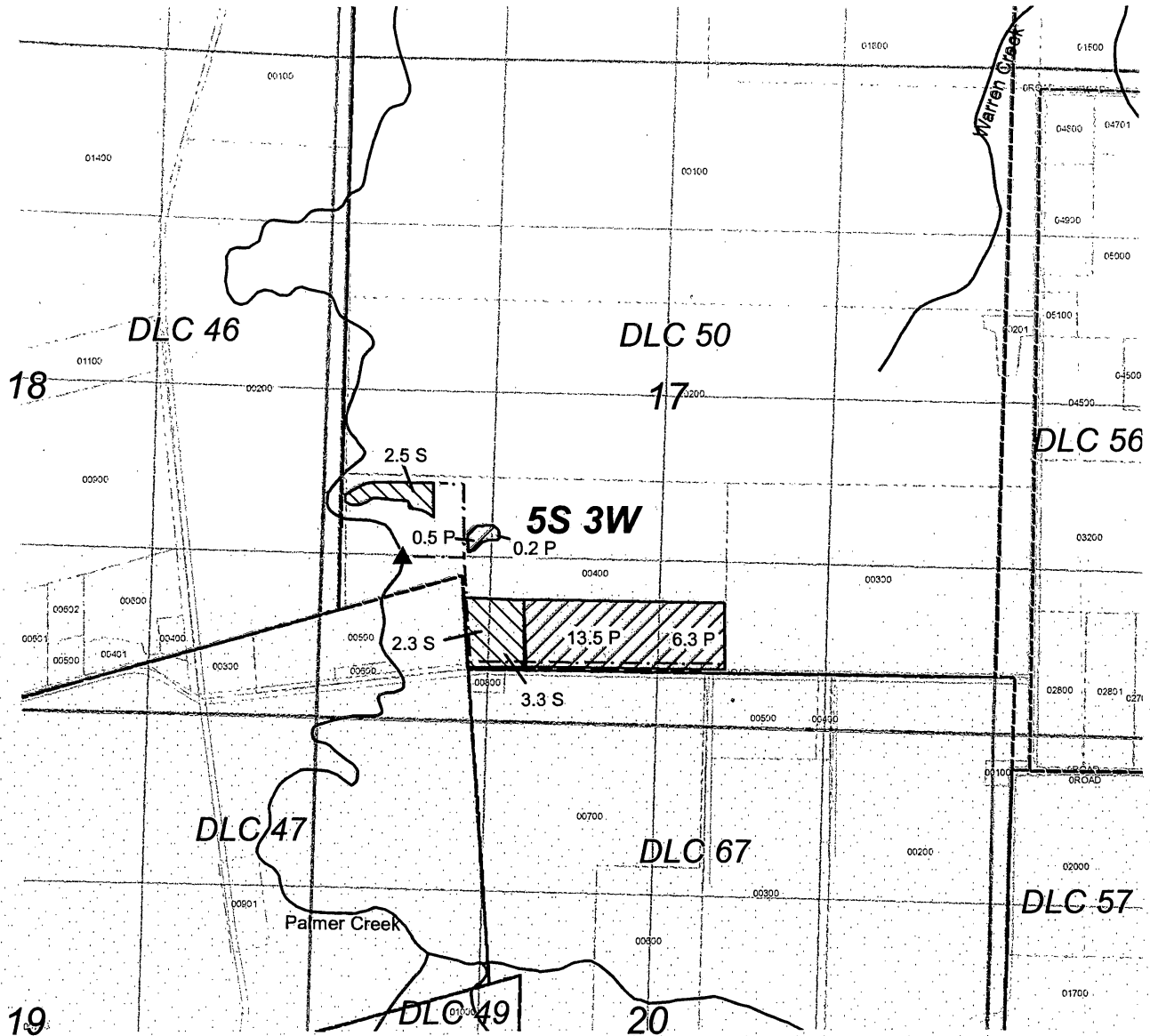


**Water Right Application  
Palmer Creek Water District  
Improvement Company**

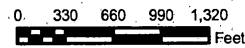
**Application Map 3 of 6**

S-88680

T5S, R3W, WM, Section 17  
Yamhill County, Oregon



1 inch = 1/4 mile



**Explanation**

- ▲ Rediversion
- Rediversion Pipeline
- Water Features
- == Roads
- DLC Boundaries
- Tax Lots
- ▨ Primary
- ▩ Supplemental

NAD 1983 HARN  
Datum of 1983  
Prepared August 28, 2018

Sources: BLM, CadNSDI, PLSS (GeoCommunicator, LSIS, 2015), Oregon Spatial Data Library, water features, county lines & tax lots, roads (spatialdata.oregonexplorer.info), Pacific Hydro-Geology, Inc. main canal, point of diversion, DLC lines, et al (shapefiles provided by)

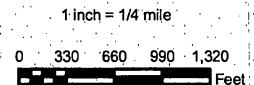
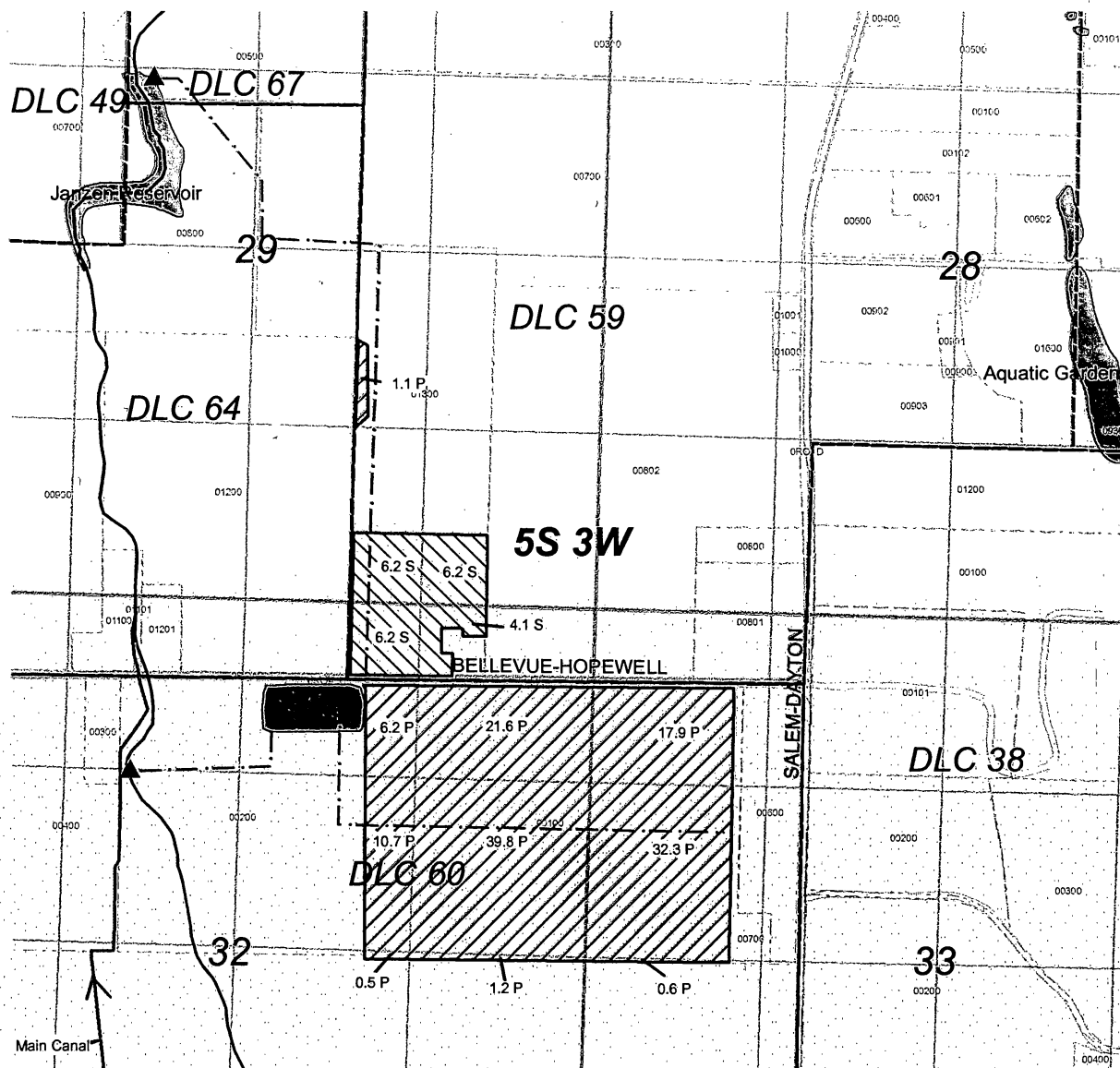
This map was prepared for the purpose of identifying the location of a water right only and is not intended to provide legal dimensions or locations of property ownership lines.



**Water Right Application  
Palmer Creek Water District  
Improvement Company**

**Application Map 4 of 6**

T5S, R3W, WM, Sections 29, 32 & 33  
Yamhill County, Oregon



- Explanation**
- ▲ Rediversion
  - - - Rediversion Pipeline
  - Water Features
  - == Roads
  - DLC Boundaries
  - Tax Lots
  - ▨ Primary
  - ▩ Supplemental

NAD 1983 HARN  
Datum of 1983  
Prepared August 28, 2018

Sources: BLM CadNSDI PLSS (GeoCommunicator LSI, 2015), Oregon Spatial Data Library water features, county lines & tax lots, roads (spatialdata.oregonexplorer.info), Pacific Hydro-Geology, Inc. main canal, point of diversion, DLC lines, et al (shapfiles provided by)

This map was prepared for the purpose of identifying the location of a water right only and is not intended to provide legal dimensions or locations of property

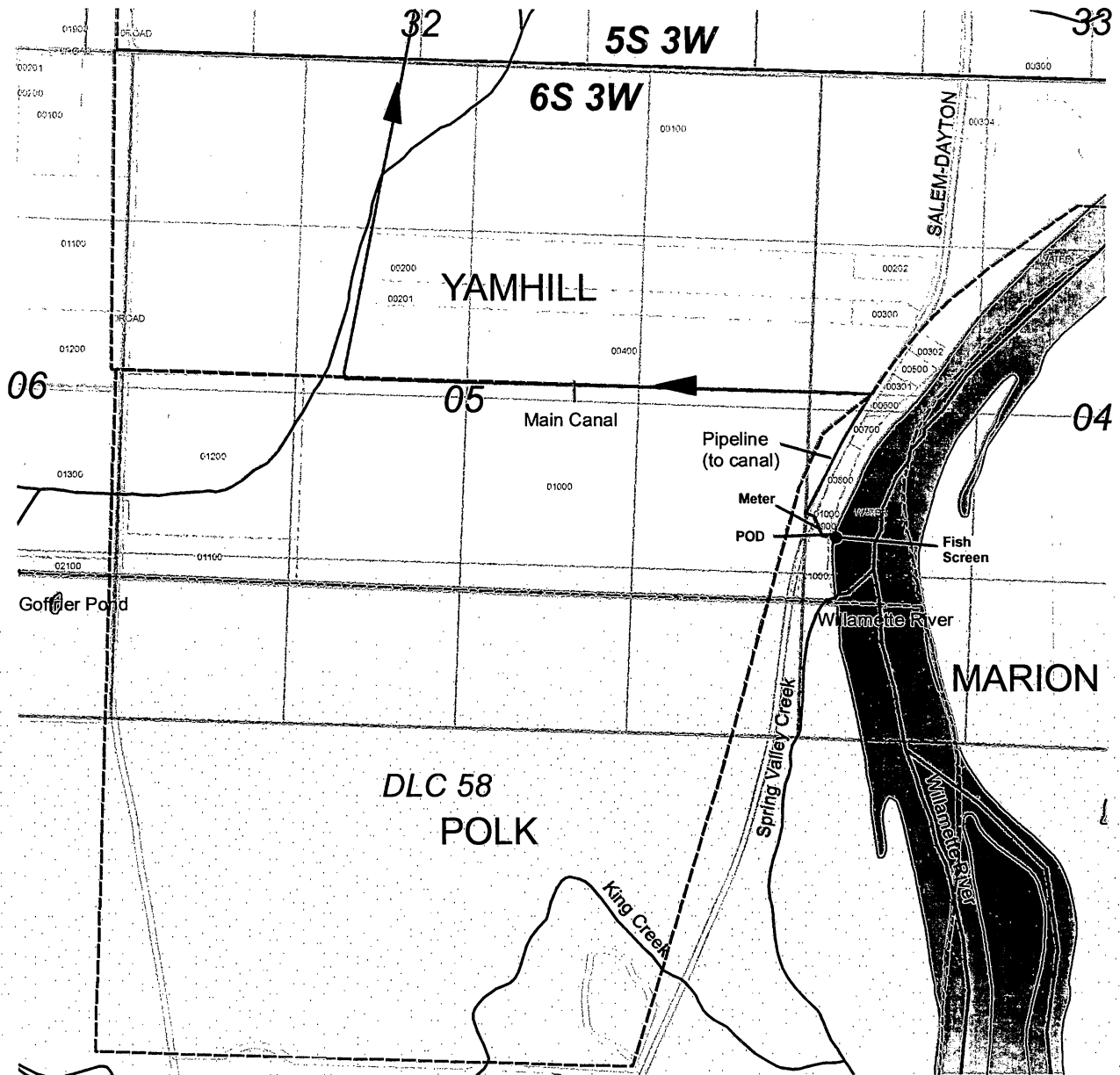


**Water Right Application  
Palmer Creek Water District  
Improvement Company**

**Application Map 5 of 6**

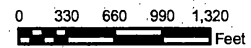
S-88680

T6S, R3W, WM, Section 04  
Yamhill County, Oregon



POD is located 4,700' N and 1,290' E from SE corner of DLC 58

1 inch = 1/4 mile



- Explanation**
- (tax lot 800)
  - Point of Diversion
  - Water Features
  - == Roads
  - DLC Boundaries
  - Tax Lots

NAD 1983 HARN  
Datum of 1983  
Prepared August 28, 2018

Sources: BLM CadNDSI PLSS (GeoCommunicator LSIS, 2015), Oregon Spatial Data Library water features, county lines & tax lots, roads (spatialdata.oregonexplorer.info), Pacific Hydro-Geology, Inc. main canal, point of diversion, DLC lines, et al (shapefiles provided by)

This map was prepared for the purpose of identifying the location of a water right only and is not intended to provide legal dimensions or locations of property ownership lines.

**Water Right Application  
Palmer Creek Water District  
Improvement Company**

**Application Map 6 of 6**