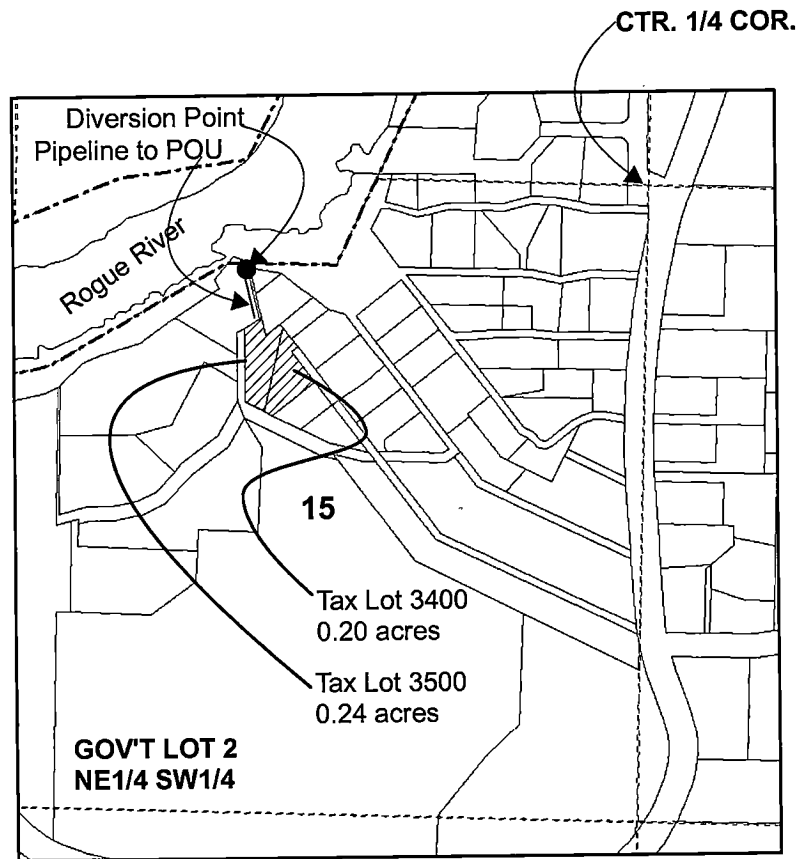
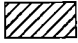
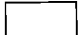


**APPLICATION FOR A PERMIT TO USE
SURFACE WATER OF LOST CREEK RESERVOIR
SHARON MATLOCK**



POD is located 120' South and 860' West
from the Center 1/4 Cor. of Section 15

Legend

-  Area_Irrigated
-  Tax_Lots



1 inch = 400 feet

RECEIVED

JUL 20 2018

OWRD