

THIS MAP WAS PREPARED FOR
ASSESSMENT PURPOSE ONLY

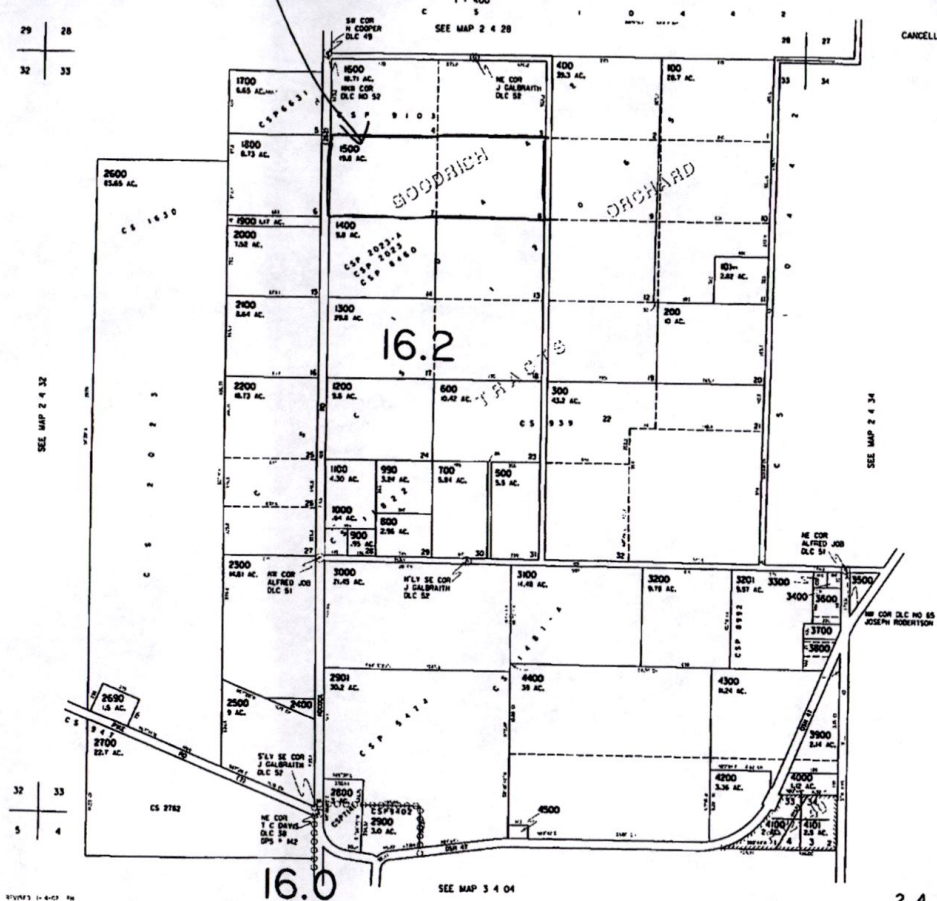
Lots 7+8

SECTION 33 T2S R4W W.M.
YAMHILL COUNTY

2 4 33

29 28
32 33

CANCELLED



2 4 33

RECEIVED
JUN 17 2019
OWRD

5-88708

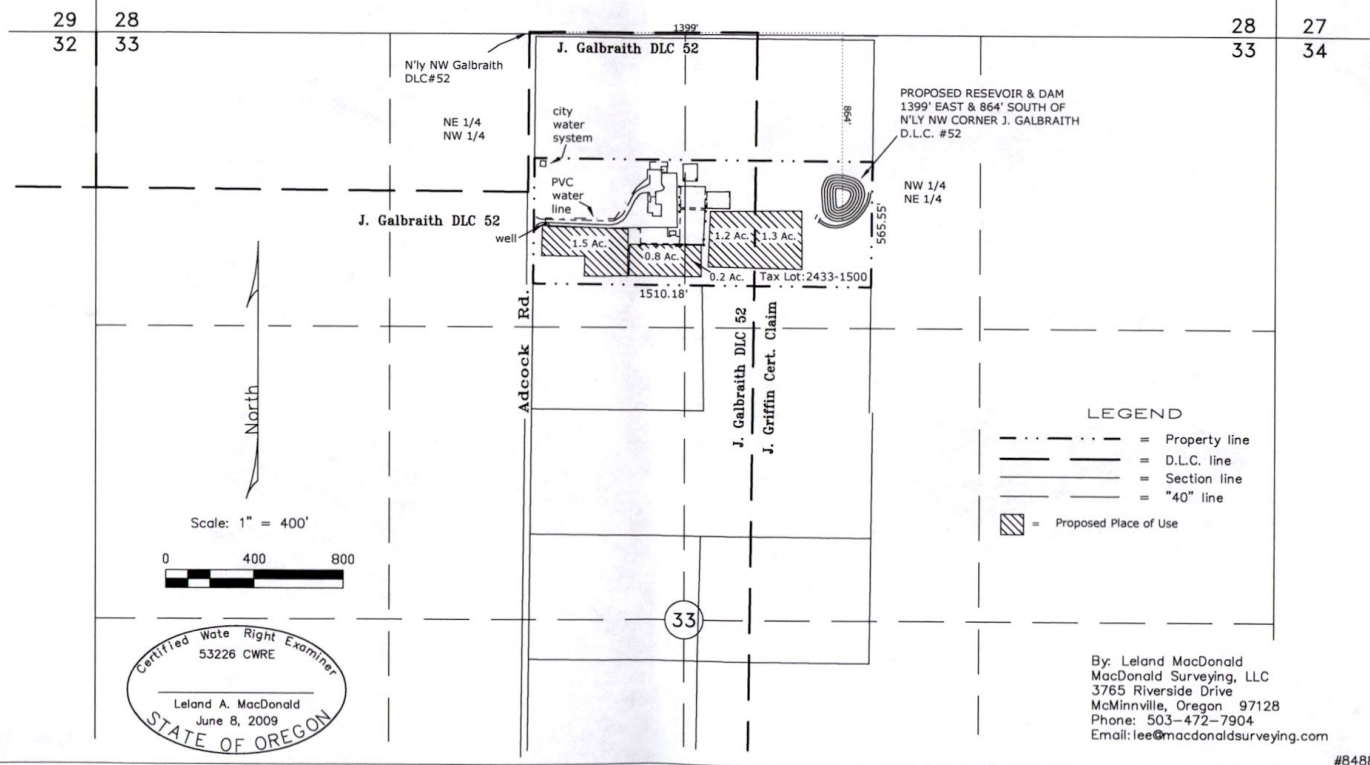
RECEIVED
 JUN 17 2019
 OWRD

T. 2 S., R. 4 W., W.M.

Location: NW 1/4 of the NE 1/4 & NE 1/4 of the NW 1/4 of Section 33, Township 2 South, Range 4 West of the Willamette Meridian, J. Galbraith DLC#52, & J. Griffin Cert. Claim No. 3379, Yamhill County, Oregon

Tax Lot: 2433-1500 Date: 13 December 2018

Application No. G-14556 Permit No. G-13346 T-8036



#8488

5-88708

HENRY COOPER
DLC 49

1600 770
NNW COR
DLC NO 52

420.2
NE COR
J GALBRAITH
DLC 52

400
39.3 AC.

UNIMPROVED

CSP9103

1500
19.8 AC.

1400
9.8 AC.

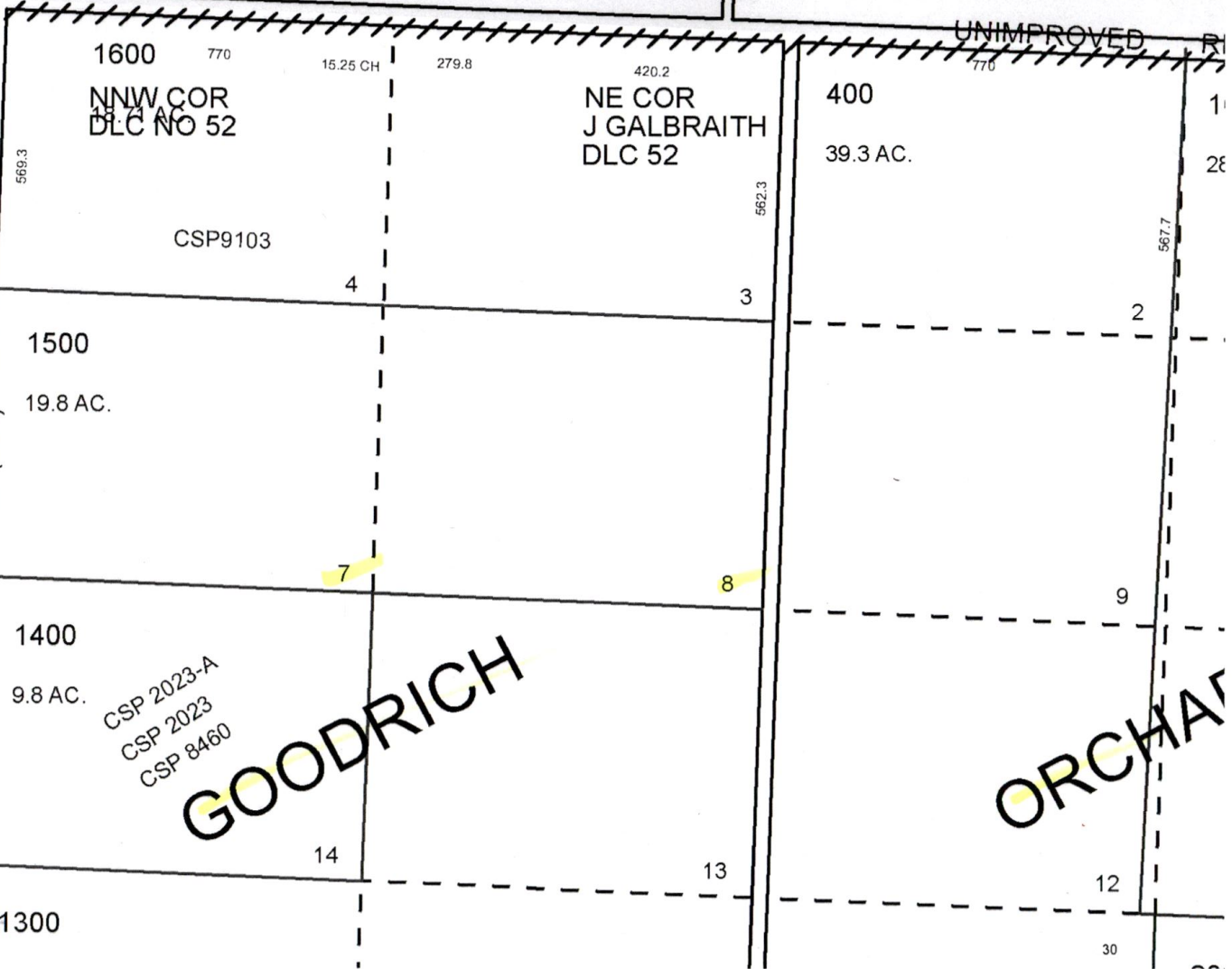
CSP 2023-A
CSP 2023
CSP 8460

GOODRICH

ORCHAR

434

(262)



15.25 CH

279.8

420.2

770

569.3

562.3

567.7

4

3

2

7

8

9

14

13

12

1300

30