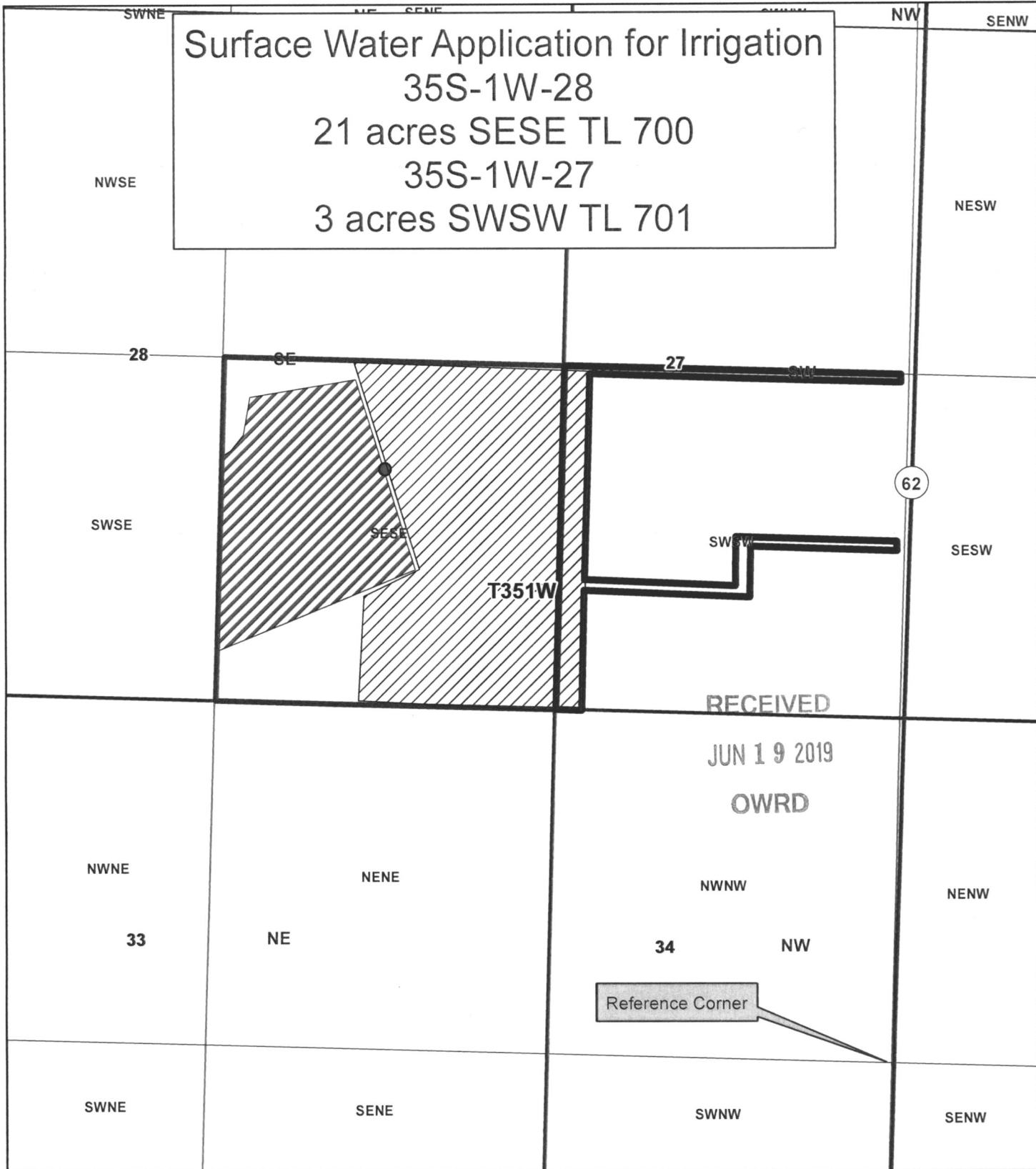


Surface Water Application for Irrigation  
 35S-1W-28  
 21 acres SESE TL 700  
 35S-1W-27  
 3 acres SWSW TL 701



**Legend**

-  POU
-  TL 701
-  TL 700
-  Center of Dam
-  Sunrise Pond

1 inch = 500 feet

Center of dam is located  
 690 ft West and  
 945 North from SE  
 Corner of Section 28



JACKSON COUNTY  
**WATERMASTER**

Prepared by Staff

This map is based on a digital database compiled by Jackson County from a variety of sources. Jackson County cannot accept responsibility for errors, omissions, or positional accuracy. There are no warranties, expressed or implied.

5-88709