

1063

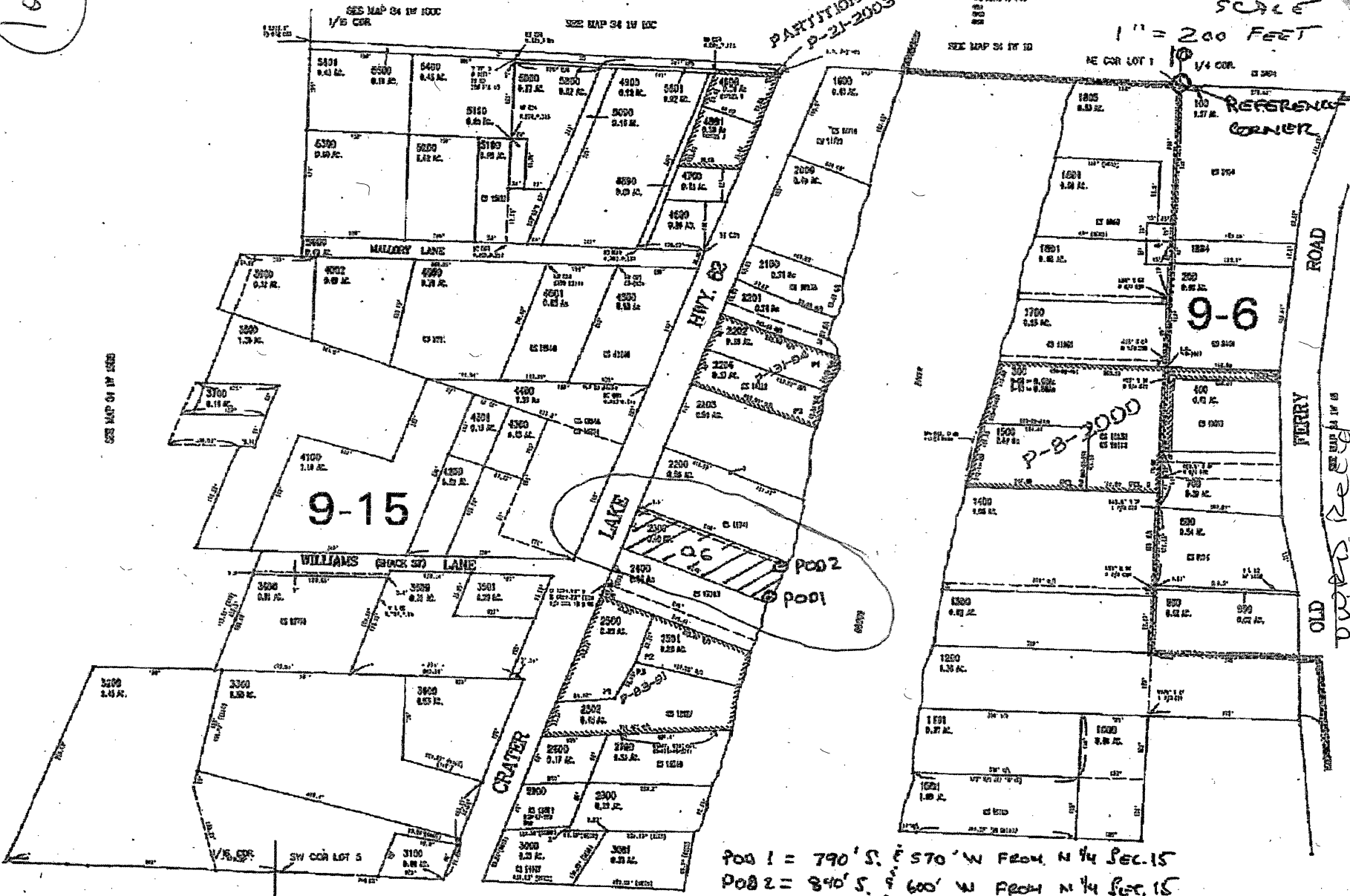
THIS MAP WAS PREPARED FOR ASSESSMENT PURPOSES ONLY

NE1/4 NW1/4 SEC15 T34S R1W W.M  
JACKSON COUNTY

Work City 34 1W 15B  
SHADY COVE  
REVISED APPROX SCALE  
1" = 200 FEET

PARTITION PLAT  
P-21-2003

CANCELLED BY:  
REVISIONS:  
DATE TO ADD:  
SEC MAP 34 1W 15



POOL 1 = 790' S, E 570' W FROM N 1/4 SEC. 15  
POOL 2 = 840' S, E 600' W FROM N 1/4 SEC. 15

OVERS RECD  
8/10/2019  
8-88719

SEC MAP 34 1W 1520