

RECEIVED

JUL 24 2019

OWRD

RECEIVED

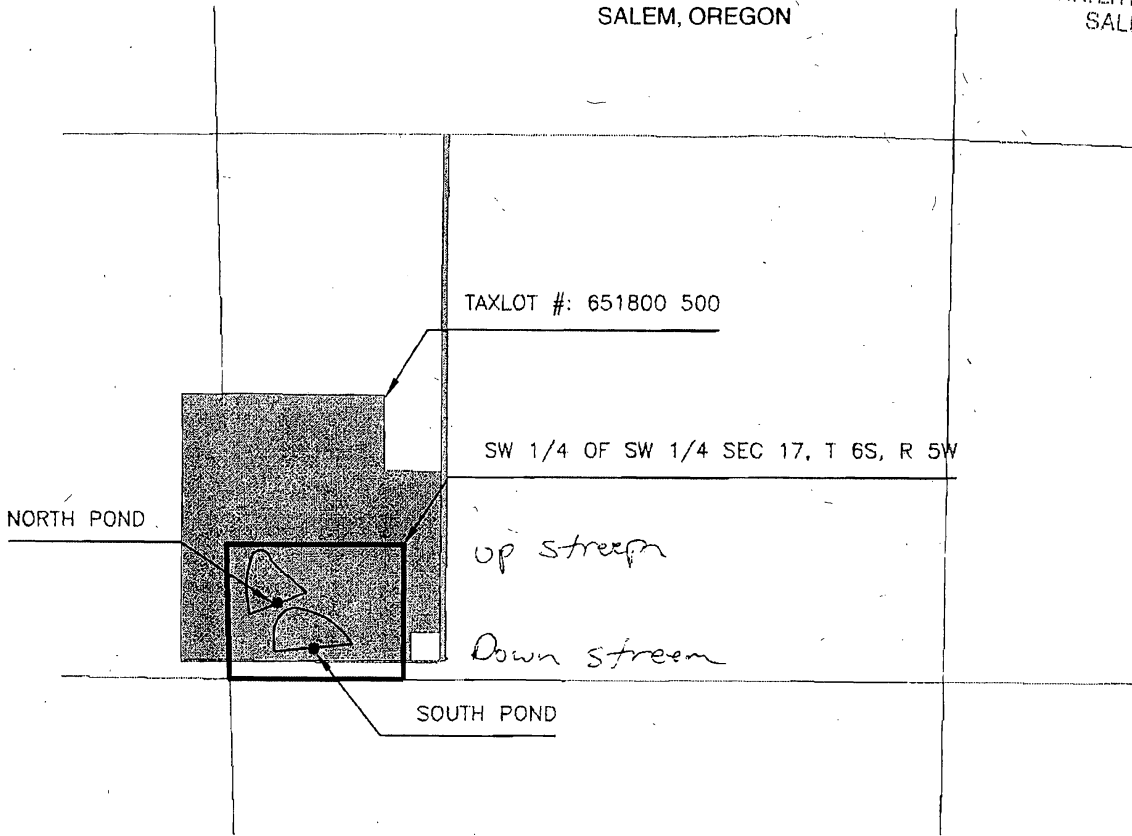
MAR 18 2008

WATER RESOURCES DEPT
SALEM, OREGON

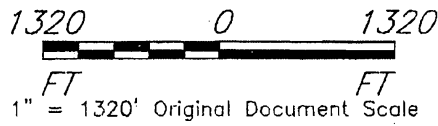
RECEIVED

APR 20 2006

WATER RESOURCES DEPT
SALEM, OREGON



MAXSON - DUCK PONDS



SOUTH POND is 660 ft east and 260 ft north of SW corner of section 17, T 6S, R5W, WM
 NORTH POND is 370 ft east and 590 ft north of SW corner of section 17, T 6S, R5W, WM

CMS

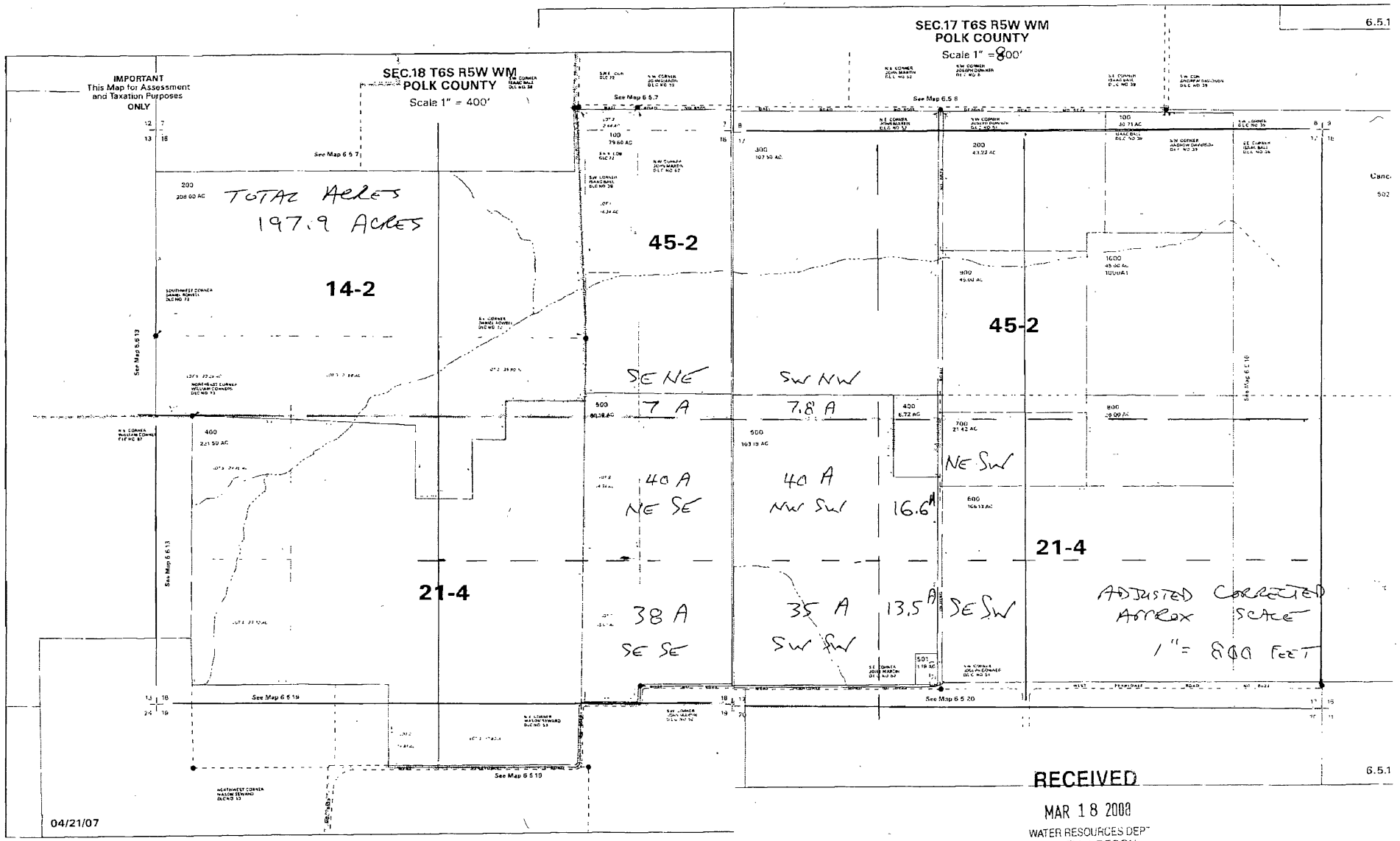
4/06

MAXSON
 DUCK PONDS - LOCATION MAP
 POLK COUNTY, OREGON

U.S.D.A. NATURAL RESOURCES CONSERVATION SERVICE

~~APP NO R 86577 Permit no R-14297 App No S-87129~~

S-88723



App No 5-87129

5-88723