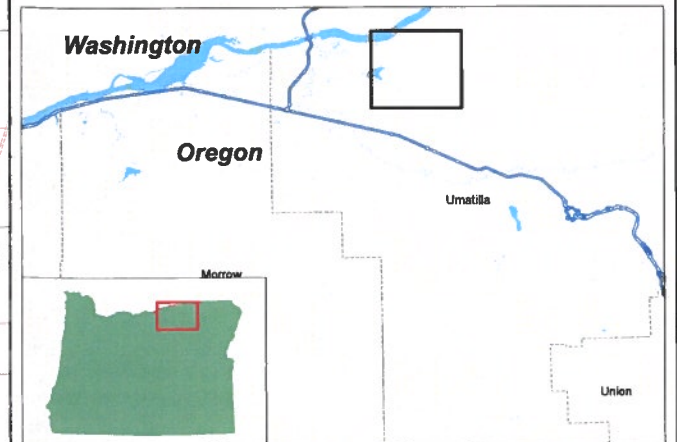


East Permit Place of Use  
Map Frame A

NOWA



Legend

- Proposed Pump Station
- Proposed Pipeline Route
- ▨ Proposed Place of Use - East
- Existing Pump Stations
- Existing Delivery Systems
- Surface water
- Groundwater
- Storage
- ▨ Surface water, primary
- ▨ Surface water, supplemental
- ▨ Groundwater, primary
- ▨ Groundwater, supplemental
- ▨ Storage, primary
- ▨ Storage, supplemental
- Surface Water
- Groundwater
- Storage

RECEIVED

SEP 12 2016

OWRD

1 inch = 0.25 miles

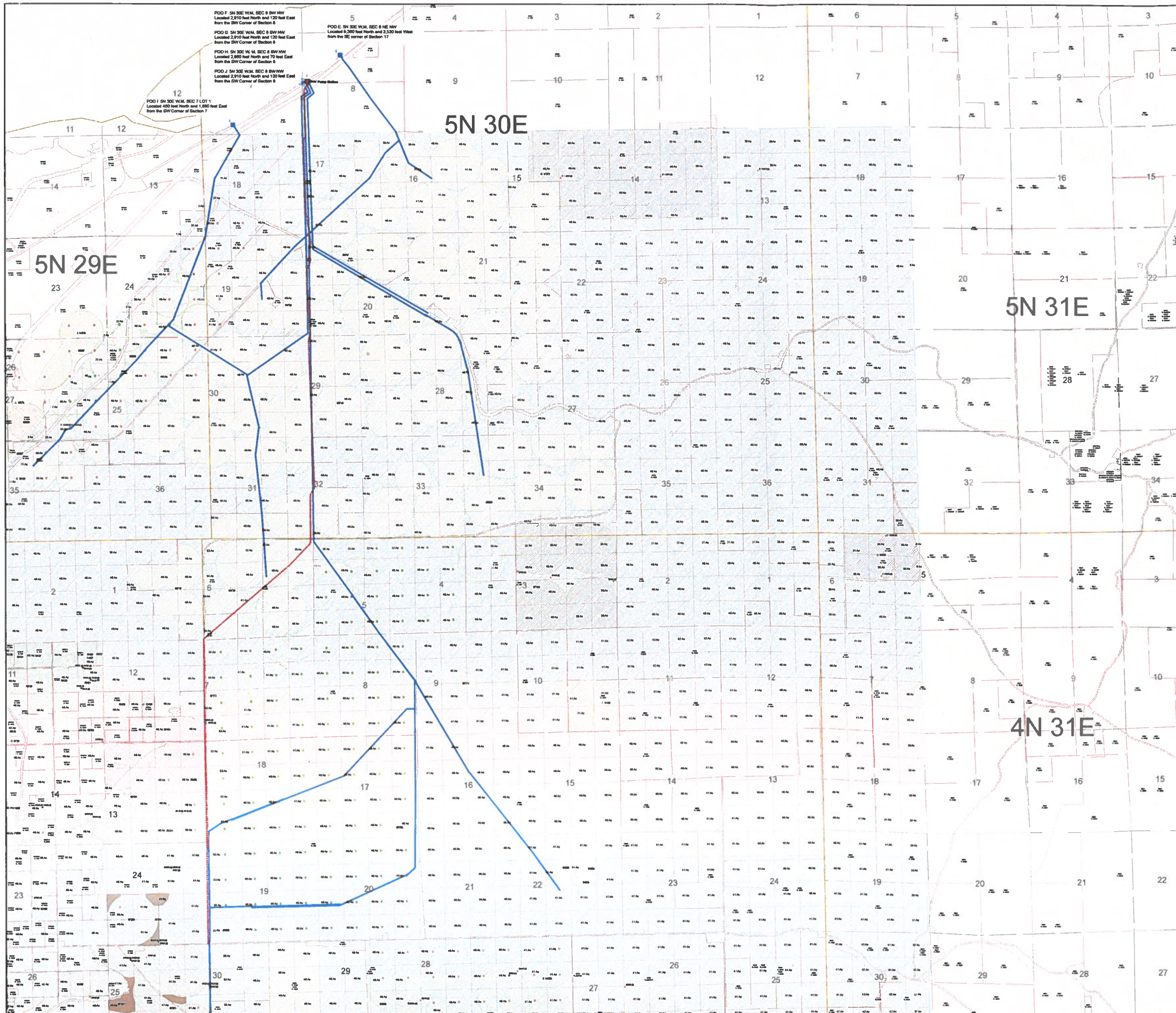
*This map was prepared for the purpose of identifying the location of a water right only and it is not intended to provide legal dimension or locations of property ownership lines.*



Projection: OR State Plane North  
Datum: NAD 1983  
Date 4/6/2016  
Data Sources:



2-88290



POD F: 5N 30E W.M. SEC 8 SW NW  
Located 2,910 feet North and 120 feet East  
from the SW Corner of Section 8

POD G: 5N 30E W.M. SEC 8 SW NW  
Located 2,910 feet North and 120 feet East  
from the SW Corner of Section 8

POD H: 5N 30E W.M. SEC 8 SW NW  
Located 2,910 feet North and 70 feet East  
from the SW Corner of Section 8

POD J: 5N 30E W.M. SEC 8 SW NW  
Located 2,910 feet North and 120 feet East  
from the SW Corner of Section 8

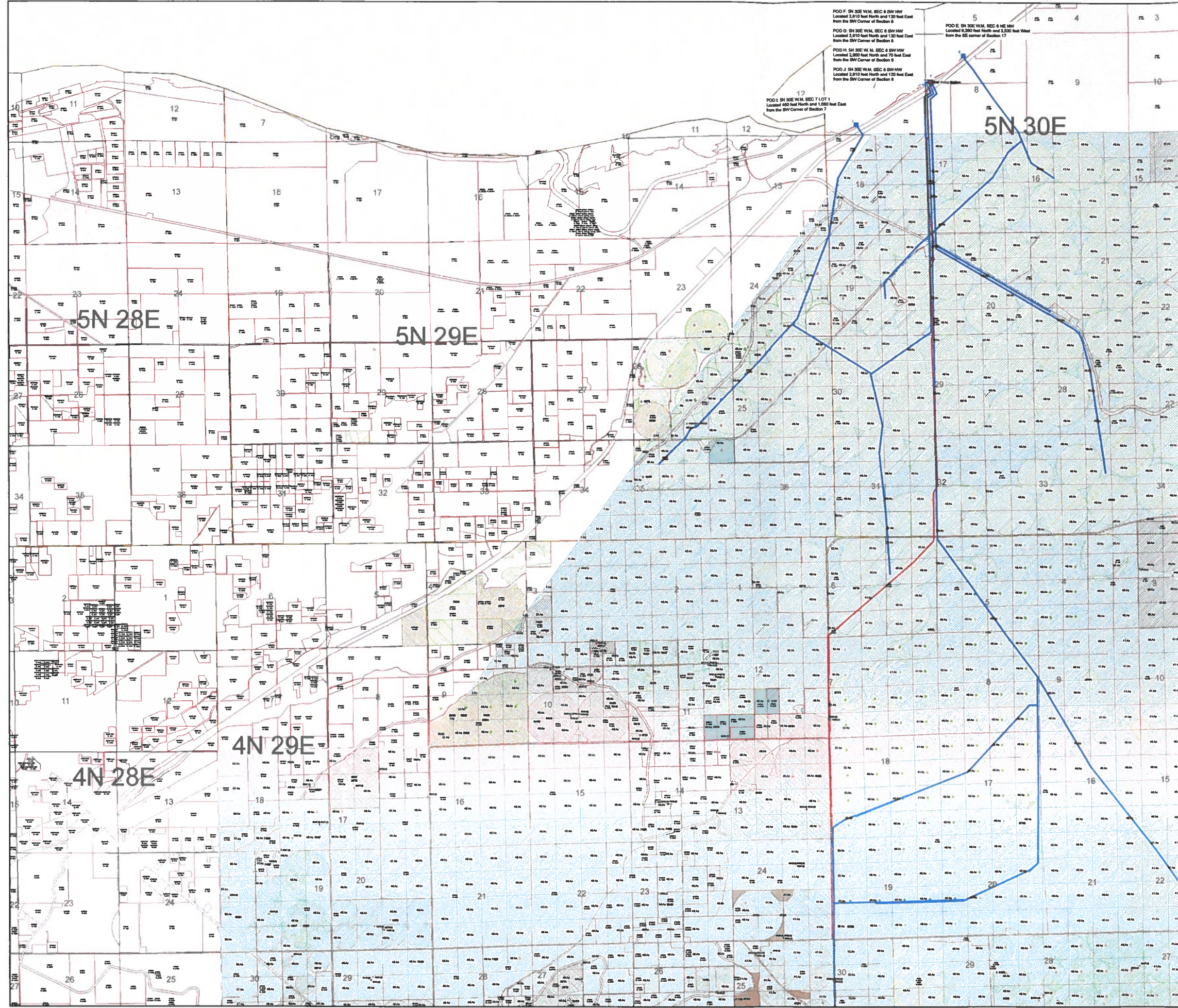
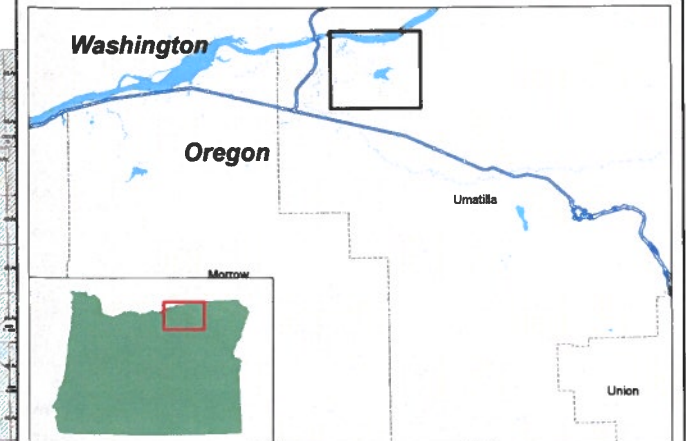
POD I: 5N 30E W.M. SEC 7 LOT 1  
Located 400 feet North and 1,890 feet East  
from the SW Corner of Section 7

POD E: 5N 30E W.M. SEC 8 NE NW  
Located 3,200 feet North and 2,300 feet West  
from the NE corner of Section 17



East Permit Place of Use  
Map Frame B

NOWA



Legend

- Proposed Pump Station
- Proposed Pipeline Route
- ▨ Proposed Place of Use - East
- Existing Pump Stations
- Existing Delivery Systems
- Surface water
- Groundwater
- Storage
- ▨ Surface water, primary
- ▨ Surface water, supplemental
- ▨ Groundwater, primary
- ▨ Groundwater, supplemental
- ▨ Storage, primary
- ▨ Storage, supplemental
- Surface Water
- Groundwater
- Storage

**RECEIVED**  
SEP 12 2016  
**OWRD**

1 inch = 0.25 miles

*This map was prepared for the purpose of identifying the location of a water right only and it is not intended to provide legal dimension or locations of property ownership lines.*



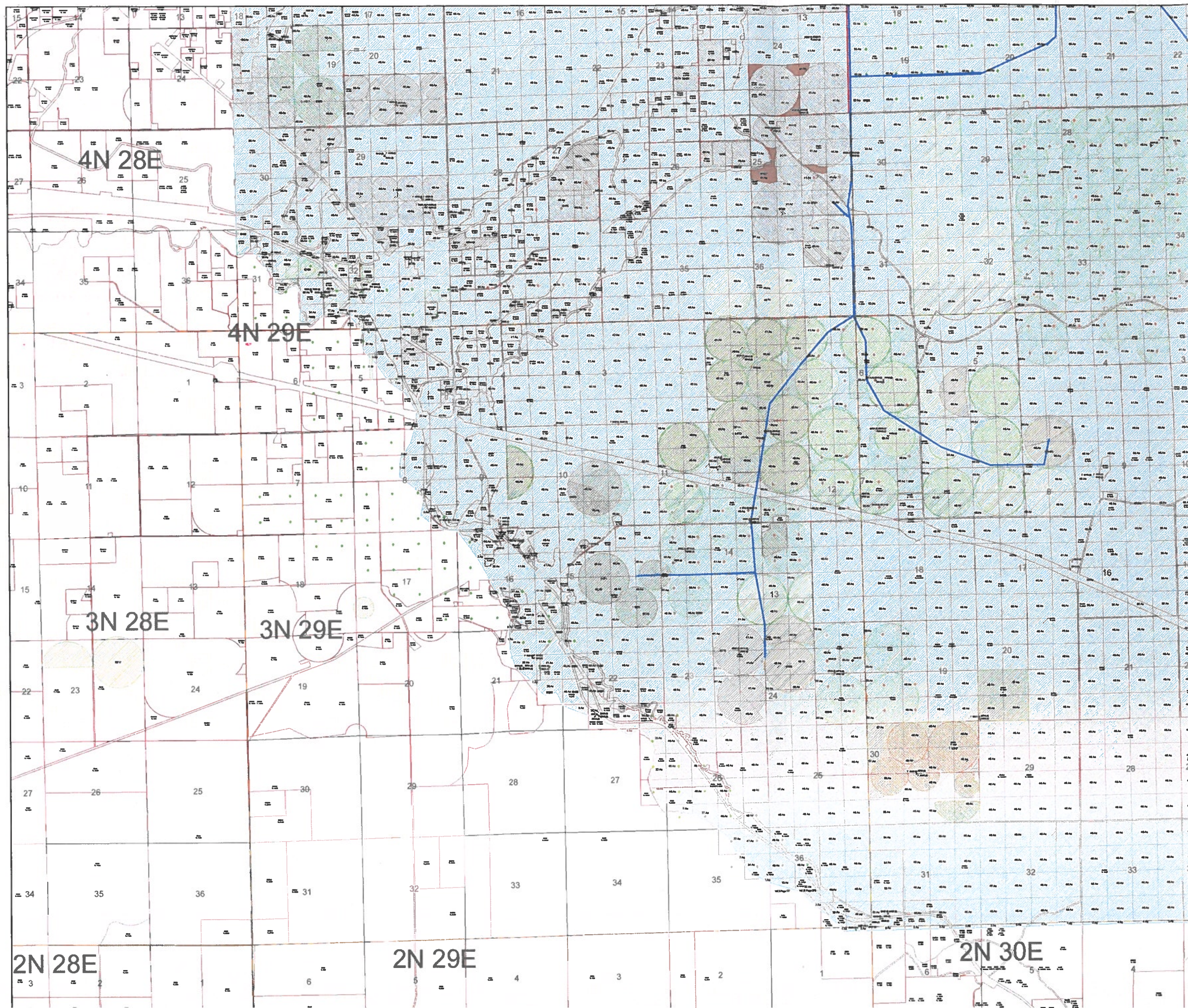
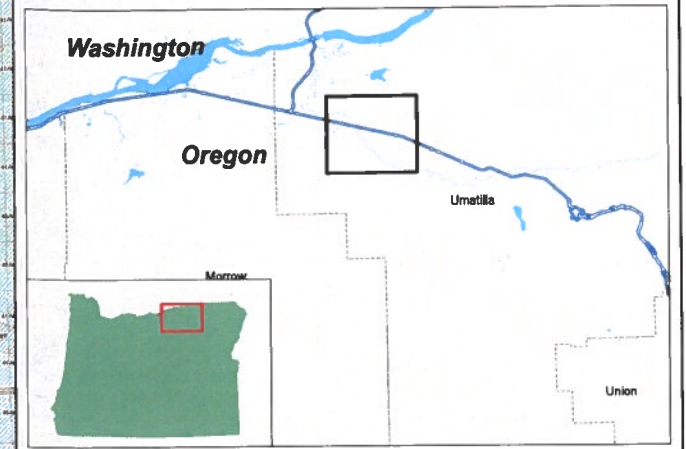
Projection: OR State Plane North  
Datum: NAD 1983  
Date 4/6/2016  
Data Sources:





East Permit Place of Use  
Map Frame C

NOWA



Legend

- Proposed Pump Station
- Proposed Pipeline Route
- ▨ Proposed Place of Use - East
- Existing Pump Stations
- Existing Delivery Systems
- Surface water
- Groundwater
- Storage
- ▨ Surface water, primary
- ▨ Surface water, supplemental
- ▨ Groundwater, primary
- ▨ Groundwater, supplemental
- ▨ Storage, primary
- ▨ Storage, supplemental
- Surface Water
- Groundwater
- Storage

RECEIVED  
SEP 12 2016  
OWRD

1 inch = 0.25 miles

*This map was prepared for the purpose of identifying the location of a water right only and it is not intended to provide legal dimension or locations of property ownership lines.*



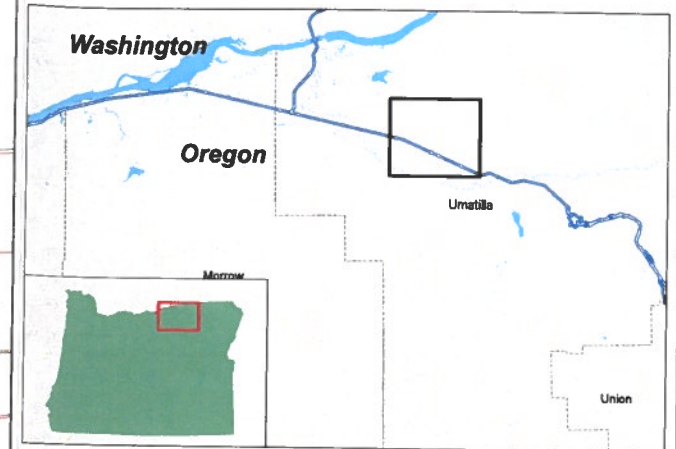
Projection: OR State Plane North  
Datum: NAD 1983  
Date 4/6/2016  
Data Source:





East Permit Place of Use  
Map Frame D

NOWA



Legend

- Proposed Pump Station
- Proposed Pipeline Route
- ▨ Proposed Place of Use - East
- Existing Pump Stations
- Existing Delivery Systems
- Surface water
- Groundwater
- Storage
- ▨ Surface water, primary
- ▨ Surface water, supplemental
- ▨ Groundwater, primary
- ▨ Groundwater, supplemental
- ▨ Storage, primary
- ▨ Storage, supplemental
- Surface Water
- Groundwater
- Storage

**RECEIVED**  
SEP 12 2016  
OWRD

1 inch = 0.25 miles

*This map was prepared for the purpose of identifying the location of a water right only and it is not intended to provide legal dimension or locations of property ownership lines.*



Projection: OR State Plane North  
Datum: NAD 1983  
Date 4/6/2016  
Data Sources:



C. BAZAN

