

RECEIVED

Application Map  
Jennifer Pariani and Veronica VanDrimmelen  
SW 1/4 SEC.14 T.26S. R.6W. W.M.  
Douglas County  
Scale: 1" = 400'

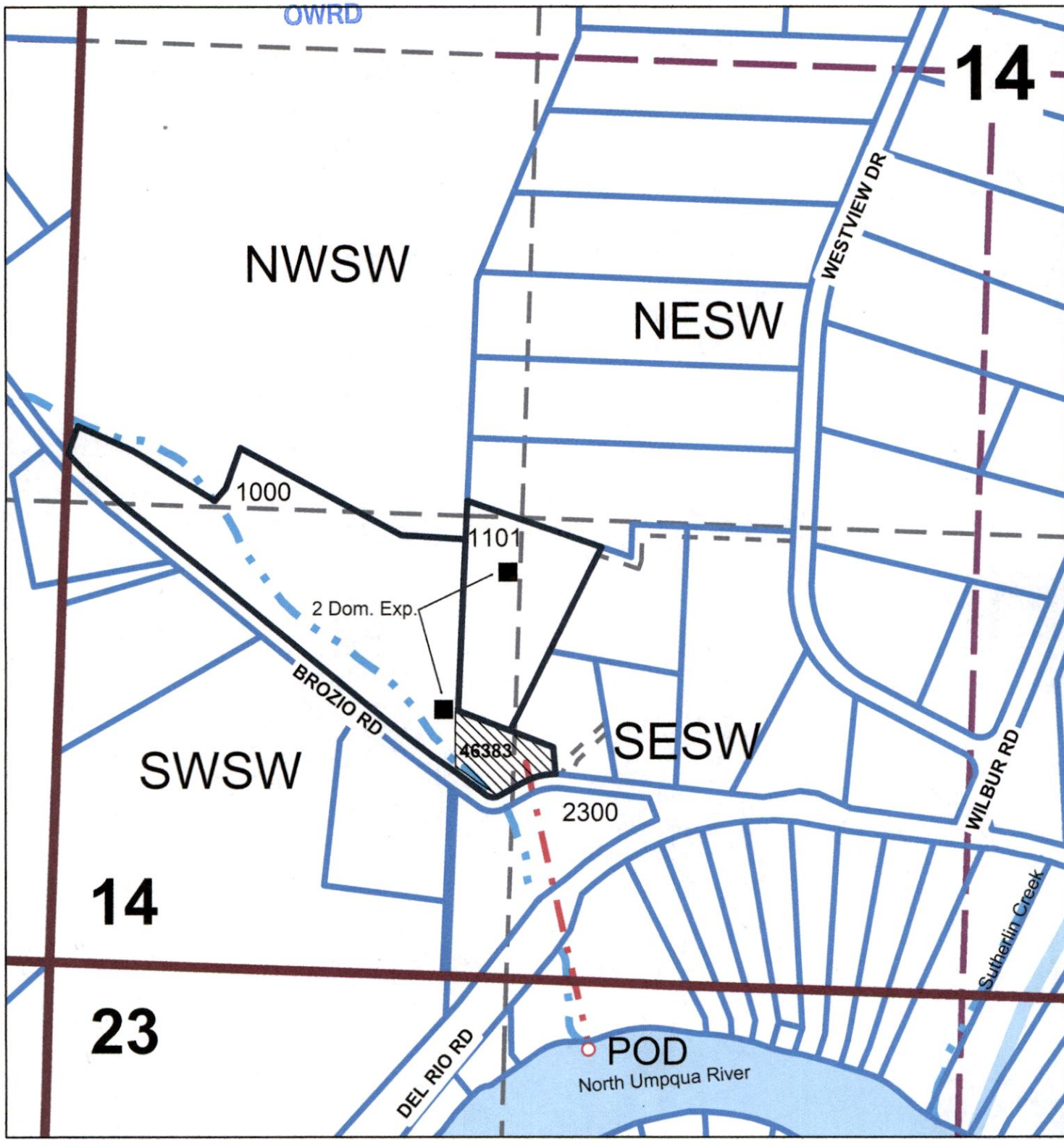
MAY 13 2019

OWRD



RECEIVED

JUN 10 2019



Point of Diversion is 200 ft. South and 1545 ft. East of the NW quarter corner of Section 23.

5-88703



