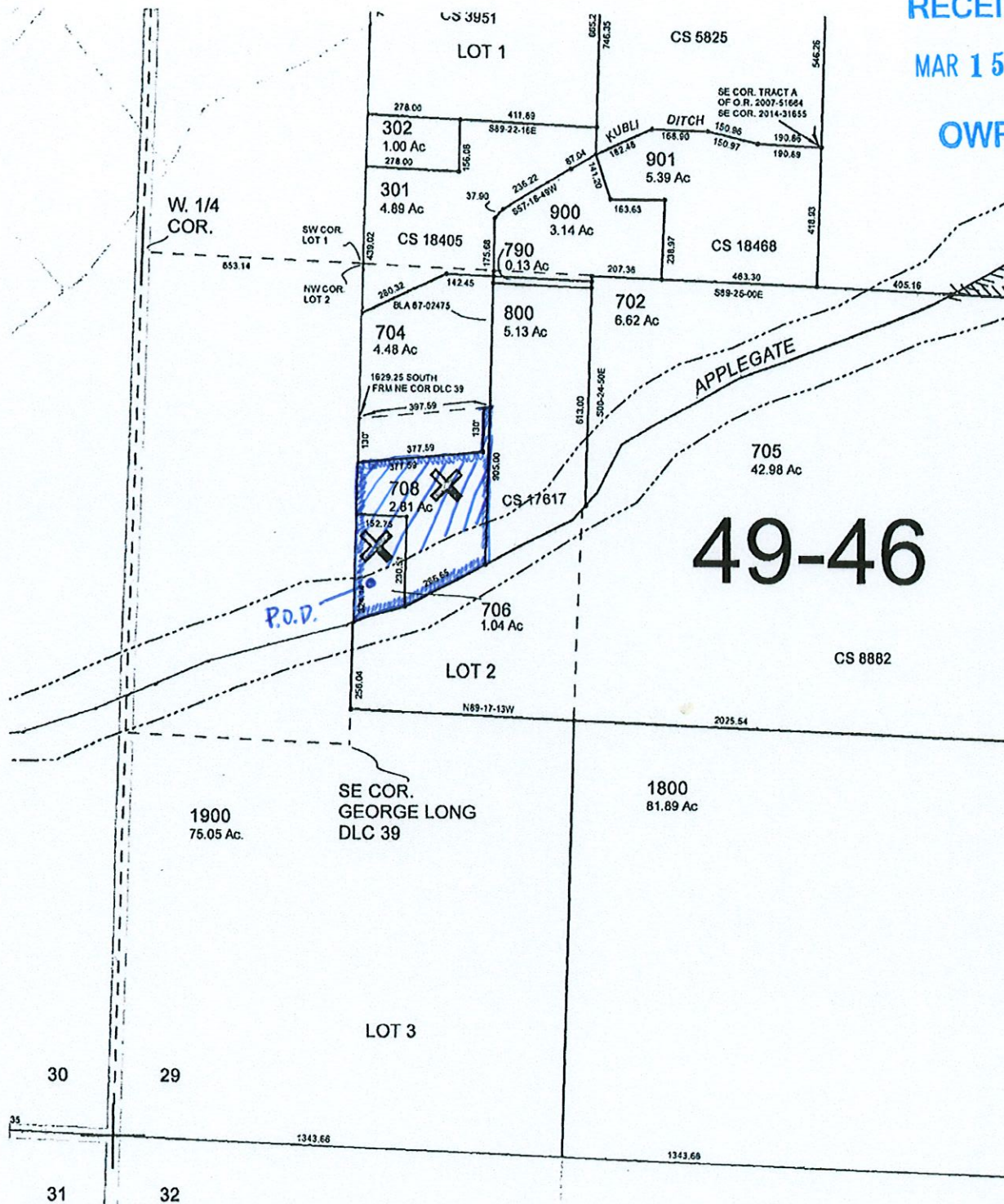


RECEIVED
MAR 15 2021
OWRD



49-46

TOWNSHIP 38 RANGE 3W SECTION 29
THIS MAP IS FOR LOCATION PURPOSES ONLY
NO LIABILITY IS ASSUMED FOR VARIATIONS
DISCLOSED BY SURVEY OR COUNTY RECORDS
FIRST AMERICAN TITLE



S.
C.
SEE MAP:

1" = 450'

POINT OF DIVERSION IS APPROXIMATELY
650' WEST AND 400' NORTH OF THE
SE 1/4 OF THE SW 1/4 OF SECTION 29



CS 2

CS 3424

CS 3702

NE COR.
DLC 39

PROVOLT

HWY

MEDFORD

PART. PLAT
P-3-199

W. 1/4
COR.

APPLEGATE

RIVER

49-46

SEE MAP 38 3 W 30

P.O.D.

708
2.81 Ac

706
1.04 Ac

LOT 2

SE COR.
DLC 39

P.1

P.2

RECEIVED
FEB 16 2021
OWRD
SALEM, OREGON

RECEIVED
MAR 15 2021
OWRD

40-2

11-2020

78.06
127.54

1900
66.45 Ac

1903
4.31 Ac

1902
4.16 Ac

1800
81.89 Ac

707
18.28 Ac

1700
39.49 Ac

1600
22.39 Ac

1601
20.00 Ac

1500
40.15 Ac

1501
1.97 Ac

1200
45.22 Ac

1100
1.50 Ac

1000
10.53 Ac

310
9.89 Ac

600
3.02 Ac

601
1.84 Ac

304
5.00 Ac

306
7.55 Ac

307
6.50 Ac

400
1.49 Ac

500
1.49 Ac

205
2.90 Ac

204
2.06 Ac

203
2.97 Ac

CS 4006

CS 5702

CS 14718

CS 21729

CS 20002

CS 22292

CS 5825

CS 18468

CS 8882

705
42.98 Ac

702
6.62 Ac

800
5.13 Ac

704
4.48 Ac

301
4.89 Ac

302
1.00 Ac

901
5.39 Ac

900
3.14 Ac

790
0.13 Ac

CS 18405

CS 3951

CS 4773

CS 3824

CS 9768

CS 10763

CS 3894

CS 5702

CS 14718

CS 21729

CS 20002

CS 22292

CS 5825

CS 18468

CS 8882

705
42.98 Ac

702
6.62 Ac

800
5.13 Ac

704
4.48 Ac

301
4.89 Ac

302
1.00 Ac

901
5.39 Ac

900
3.14 Ac

790
0.13 Ac

CS 18405

CS 3951

CS 4773

CS 3824

CS 9768

CS 10763

CS 3894

CS 5702

CS 14718

CS 21729

CS 20002

CS 22292

CS 5825

CS 18468

CS 8882

705
42.98 Ac

702
6.62 Ac

800
5.13 Ac

704
4.48 Ac

301
4.89 Ac

302
1.00 Ac

901
5.39 Ac

900
3.14 Ac

790
0.13 Ac

CS 18405

CS 3951

CS 4773

CS 3824

CS 9768

CS 10763

CS 3894

CS 5702

CS 14718

CS 21729

CS 20002

CS 22292

CS 5825

CS 18468

CS 8882

705
42.98 Ac

702
6.62 Ac

800
5.13 Ac

704
4.48 Ac

301
4.89 Ac

302
1.00 Ac

901
5.39 Ac

900
3.14 Ac

790
0.13 Ac

CS 18405

CS 3951

CS 4773

CS 3824

CS 9768

CS 10763

CS 3894

CS 5702

CS 14718

CS 21729

CS 20002

CS 22292

CS 5825

CS 18468

CS 8882

705
42.98 Ac

702
6.62 Ac

800
5.13 Ac

704
4.48 Ac

301
4.89 Ac

302
1.00 Ac

901
5.39 Ac

900
3.14 Ac

790
0.13 Ac

CS 18405

CS 3951

CS 4773

CS 3824

CS 9768

CS 10763

CS 3894

CS 5702

CS 14718

CS 21729

CS 20002

CS 22292

CS 5825

CS 18468

CS 8882

705
42.98 Ac

702
6.62 Ac

800
5.13 Ac

704
4.48 Ac

301
4.89 Ac

302
1.00 Ac

901
5.39 Ac

900
3.14 Ac

790
0.13 Ac

CS 18405

CS 3951

CS 4773

CS 3824

CS 9768

CS 10763

CS 3894

CS 5702

CS 14718

CS 21729

CS 20002

CS 22292

CS 5825

CS 18468

CS 8882

705
42.98 Ac

702
6.62 Ac

800
5.13 Ac

704
4.48 Ac

301
4.89 Ac

302
1.00 Ac

901
5.39 Ac

900
3.14 Ac

790
0.13 Ac

CS 18405

CS 3951

CS 4773

CS 3824

CS 9768

CS 10763

CS 3894

CS 5702

CS 14718

CS 21729

CS 20002

CS 22292

CS 5825

CS 18468

CS 8882

705
42.98 Ac

702
6.62 Ac

800
5.13 Ac

704
4.48 Ac

301
4.89 Ac

302
1.00 Ac

901
5.39 Ac

900
3.14 Ac

790
0.13 Ac

CS 18405

CS 3951

CS 4773

CS 3824

CS 9768

CS 10763

CS 3894

CS 5702

CS 14718

CS 21729

CS 20002

CS 22292

CS 5825

CS 18468

CS 8882

705
42.98 Ac

702
6.62 Ac

800
5.13 Ac

704
4.48 Ac

301
4.89 Ac

302
1.00 Ac

901
5.39 Ac

900
3.14 Ac

790
0.13 Ac

CS 18405

CS 3951

CS 4773

CS 3824

CS 9768

CS 10763

CS 3894

CS 5702

CS 14718

CS 21729

CS 20002

CS 22292

CS 5825

CS 18468

CS 8882

705
42.98 Ac

702
6.62 Ac

800
5.13 Ac

704
4.48 Ac

301
4.89 Ac

302
1.00 Ac

901
5.39 Ac

900
3.14 Ac

790
0.13 Ac

CS 18405

CS 3951

CS 4773

CS 3824

CS 9768

CS 10763

CS 3894

CS 5702

CS 14718

CS 21729

CS 20002