

THIS MAP WAS PREPARED FOR ASSESSMENT PURPOSE ONLY.

SEC.1 T.28S. R.7W. W.M. ✓
DOUGLAS COUNTY

REVISED ON
10-29-19

28 7 1



CANCELLED NO'S
201

SEE MAP 27 7 36C

1" = 400'

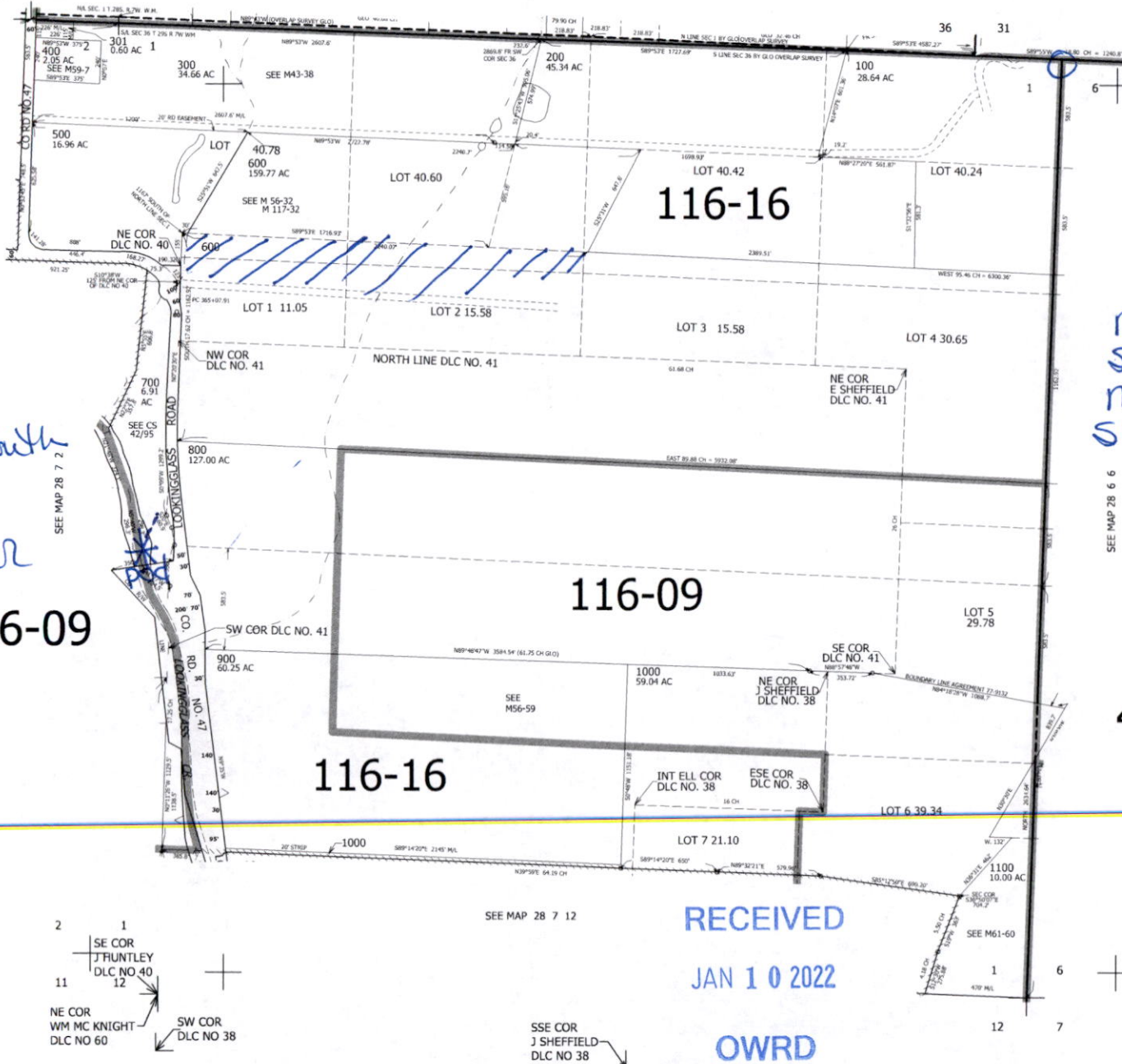
SEE MAP 27 7 36

35

36

36

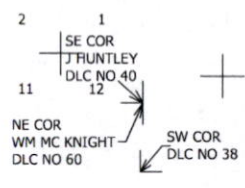
31



*pod = 2720' south
and 80' east
from NW corner
of Sec. 1.

renw = 2.5
senw = 5.0
nwnw = 3.5
swnw = 4.0
15

RECEIVED
JAN 10 2022
OWRD



557,000

28 7 1

RECEIVED

JAN 10 2022

OWRD

28 7 1

REVISED ON
9-8-10

SEC.1 T.28S. R.7W. W.M.
DOUGLAS COUNTY

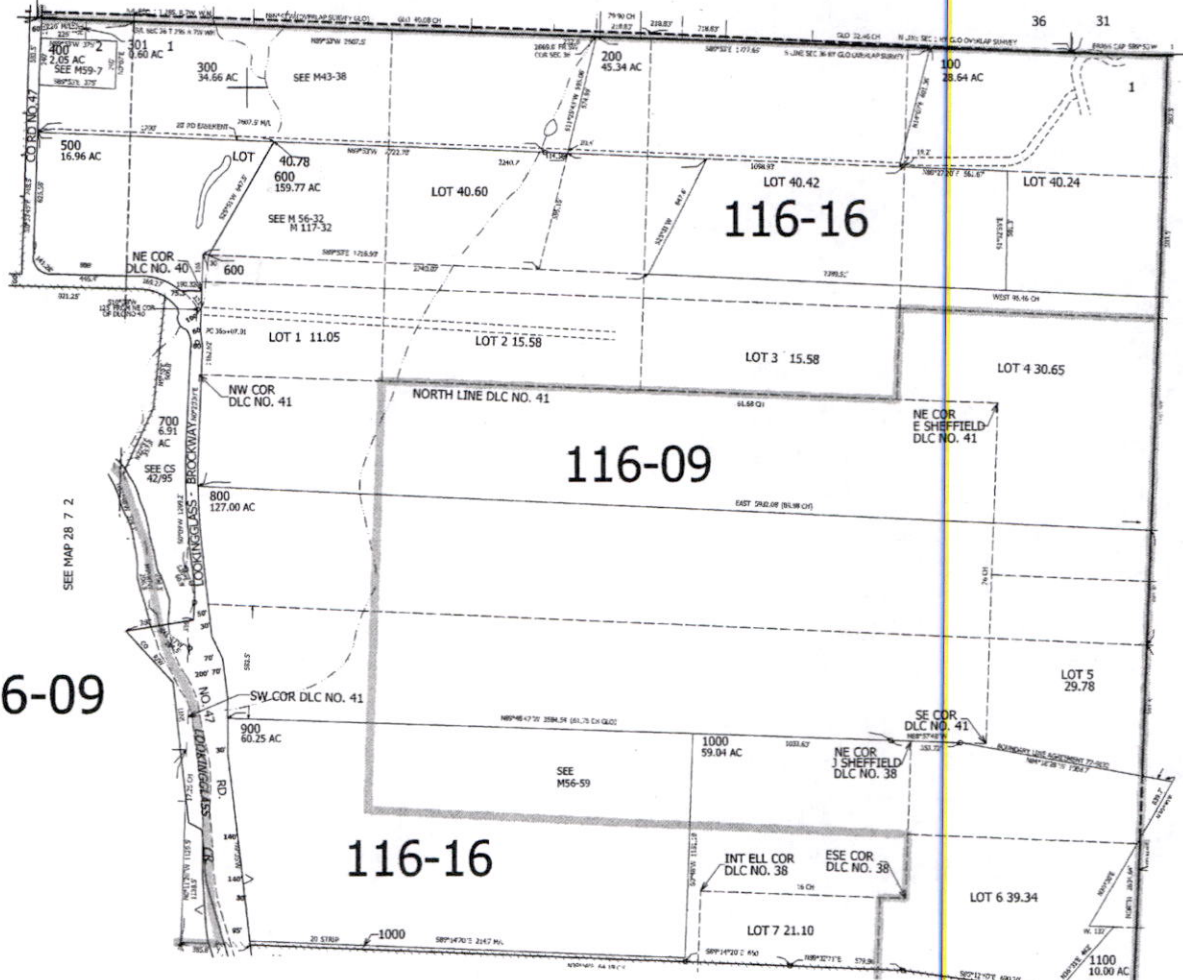
1" = 400'

SEE MAP 27 7 36C

SEE MAP 27 7 36

THIS MAP WAS PREPARED FOR
ASSESSMENT PURPOSE ONLY.

35 36



CANCELLED NO'S
201

SEE MAP 28 6 6

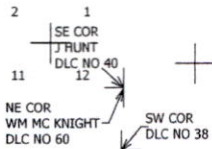
116-09

116-09

116-16

4-00

SEE MAP 28 7 12



4,125,000

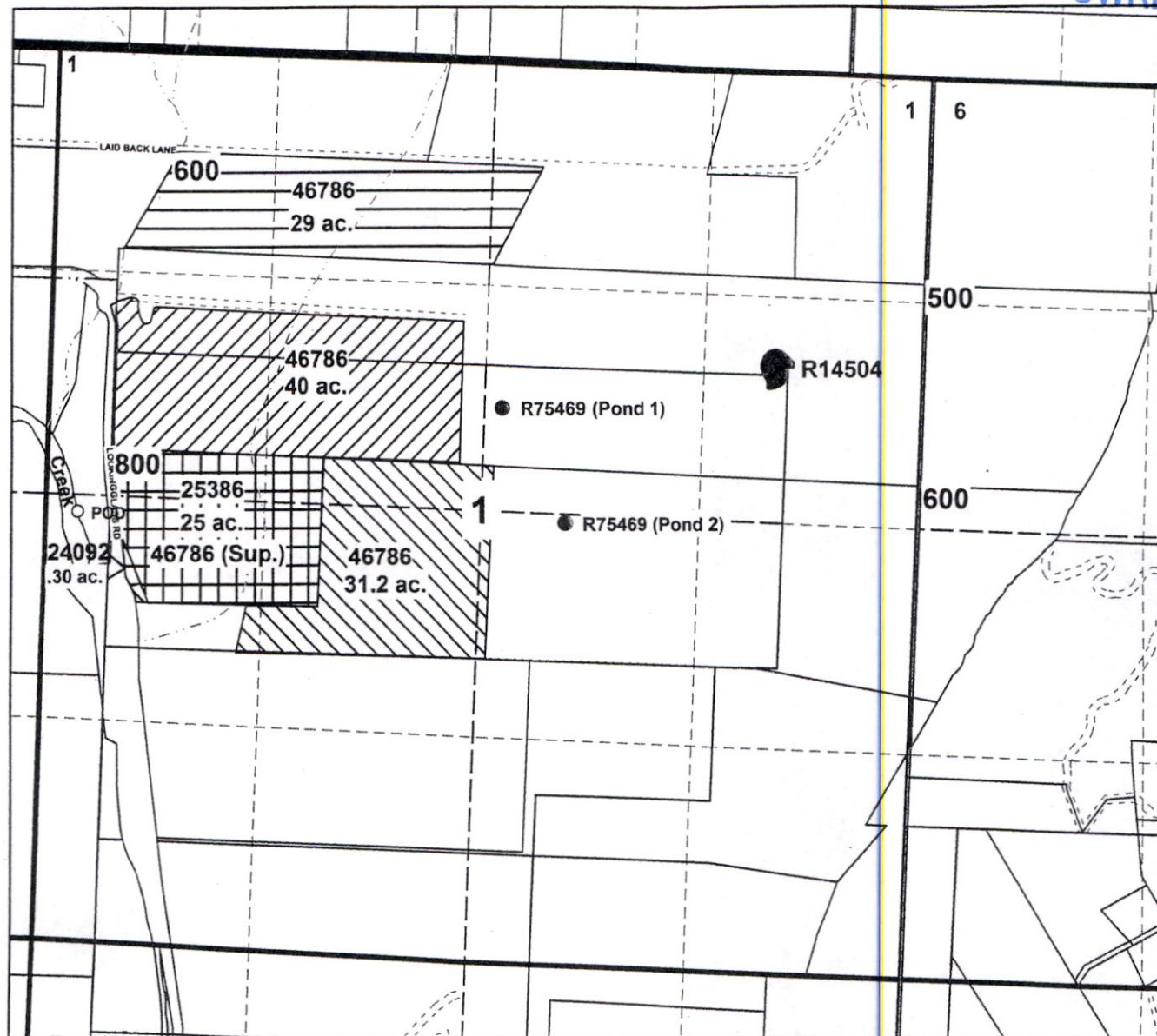
SSE COR
J SHEFFIELD
DLC NO 38

1 6
12 7

557,000

28 7 1

T.28S. R.7W. SEC.1



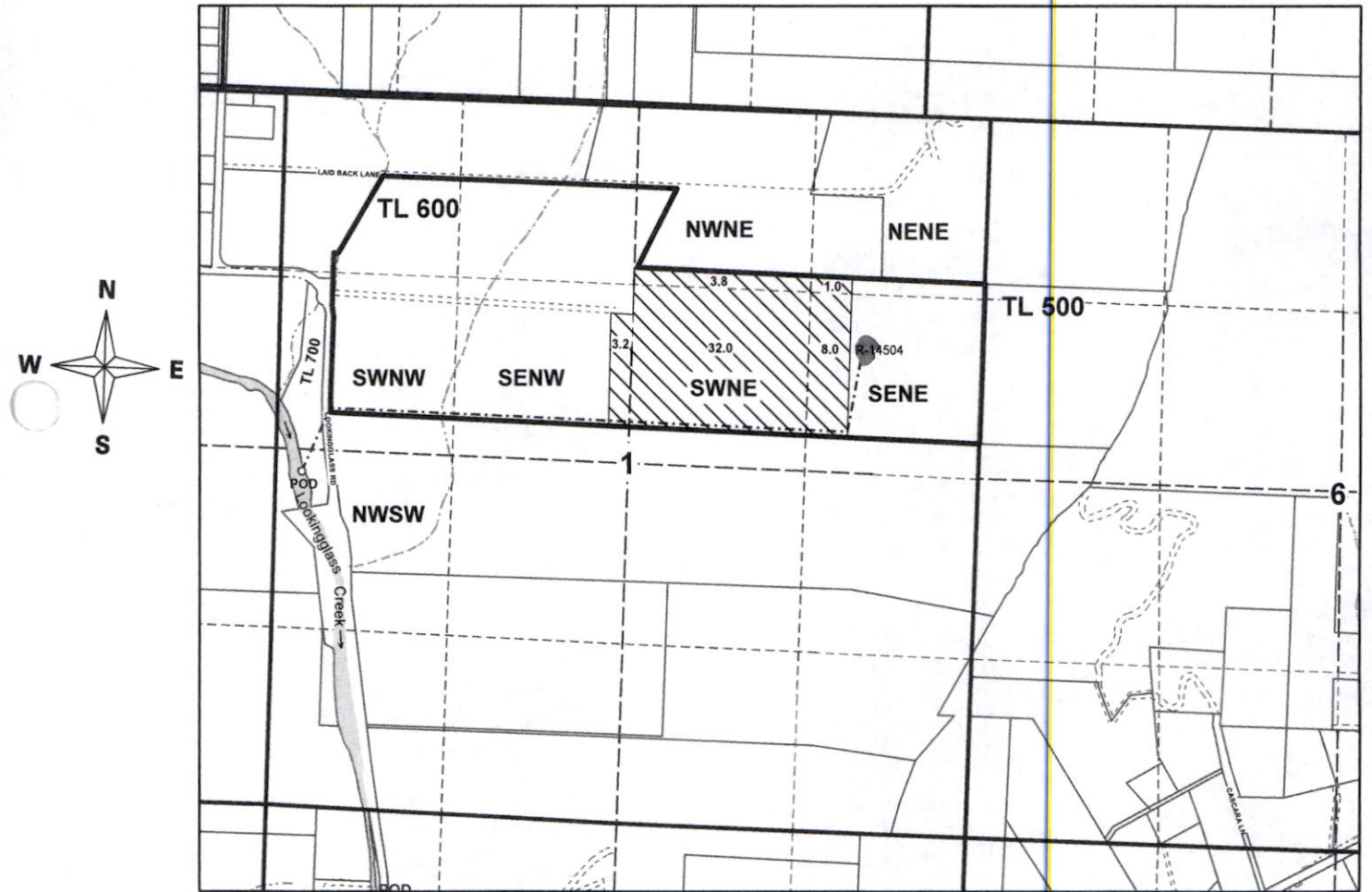
- 25.0 Acres Irrigation - Live Flow (P# 25386)**
- 25.0 Acres Irrigation - LOWCD Supplemental (46786)**
- 100.2 Acres Irrigation - LOWCD Primary (46786)**
- 0.30 Acres Irrigation - Live Flow (P #24092)**
- 0.30 Acres Irrigation - LOWCD Supplemental (46786)**
- R-14504 - Heinze Pond**
- R75469 - Pond 1 and Pond 2**

This is not a legal map of record. This map is intended for reference purposes only.

Water Right Application for Mark and Kelly Bennett

T.28S. R.7W. Section 1
Douglas County
Scale: 1" = 1,320'

RECEIVED
JAN 10 2022
OWRD



Point of Diversion is 2,720 ft. south and 180 ft. east
from the northwest corner of Section 1.

*superseded
map*
c91818