

RECEIVED

OCT 23 2020

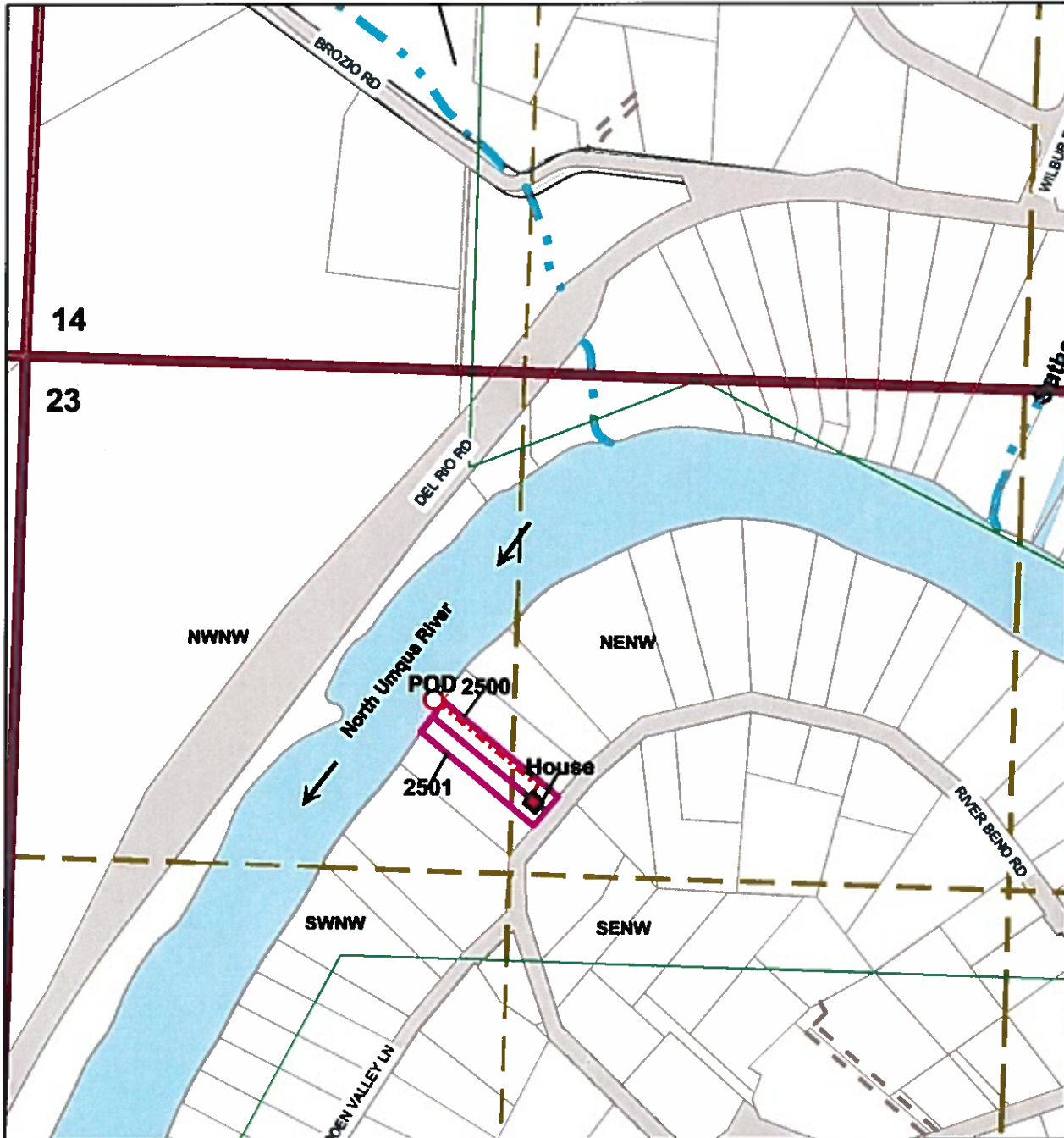
RECEIVED

DEC 14 2020

OWRD

OWRD

Surface Water Application
Volk
T.26S R.6W Section 23
Douglas County
Scale: 1"=400'



**Point of Diversion is 870 ft South and 1070 ft East of the NW 1/4
Section Corner of 23**

The purpose of this map is to identify
the location of a water right.
Not intended to show property ownership.

RECEIVED

RECEIVED

DEC 14 2020

OCT 23 2020

OWRD

OWRD

NW1/4 SEC.23 T.26S. R.6W. W.M.
DOUGLAS COUNTY

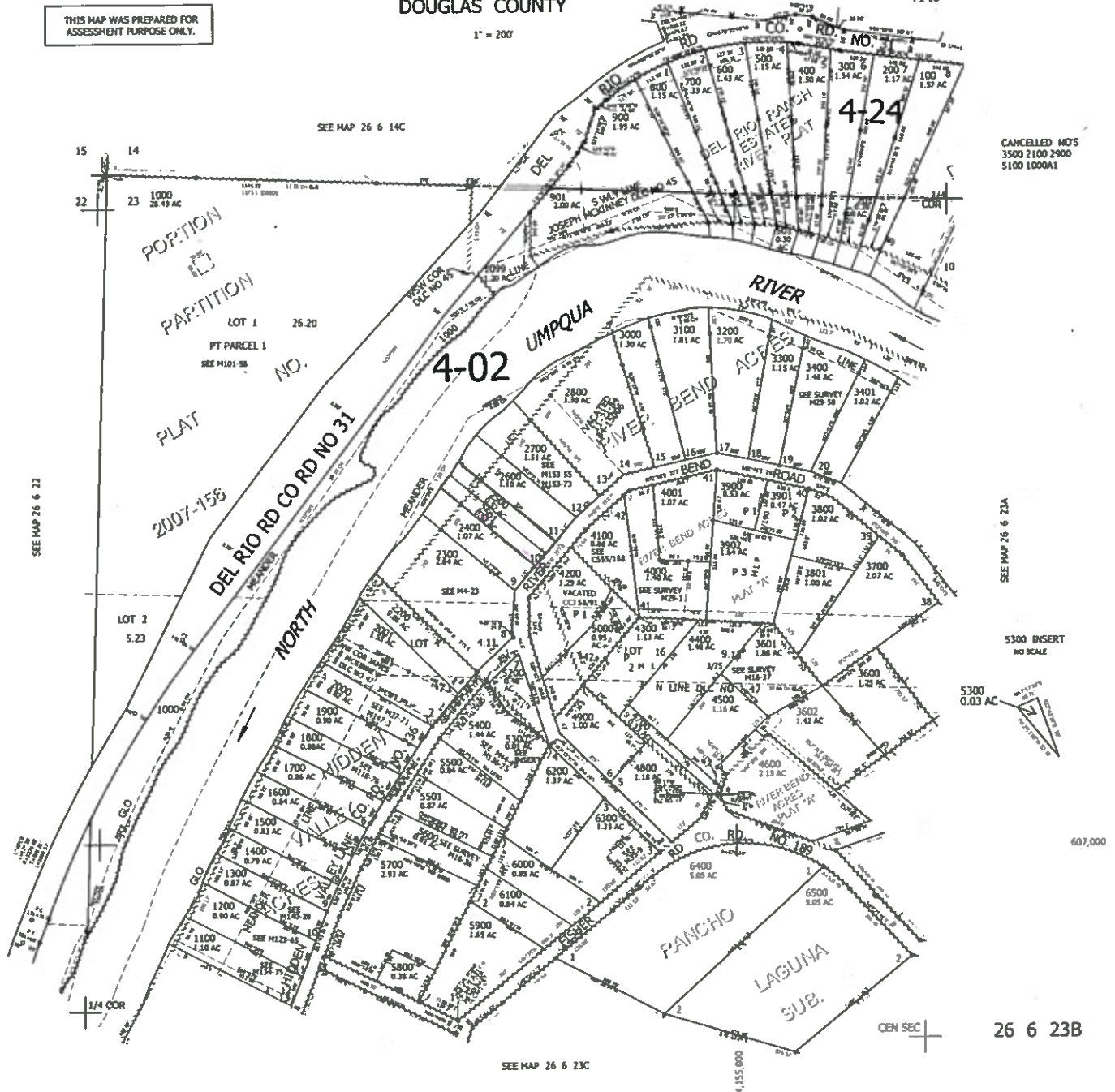
SEE MAP 26 6 14D

REVISED ON
4-2-20

26 6 23B

THIS MAP WAS PREPARED FOR
ASSESSMENT PURPOSE ONLY.

1" = 200'



CANCELLED NOS
3500 2100 2900
5100 1000A1

SEE MAP 26 6 23A

5300 INSERT
NO SCALE

5300
0.03 AC

607,000

26 6 23B