



Surface Water Application Map

Couron Family Trust

T.26s R.4w Section 17

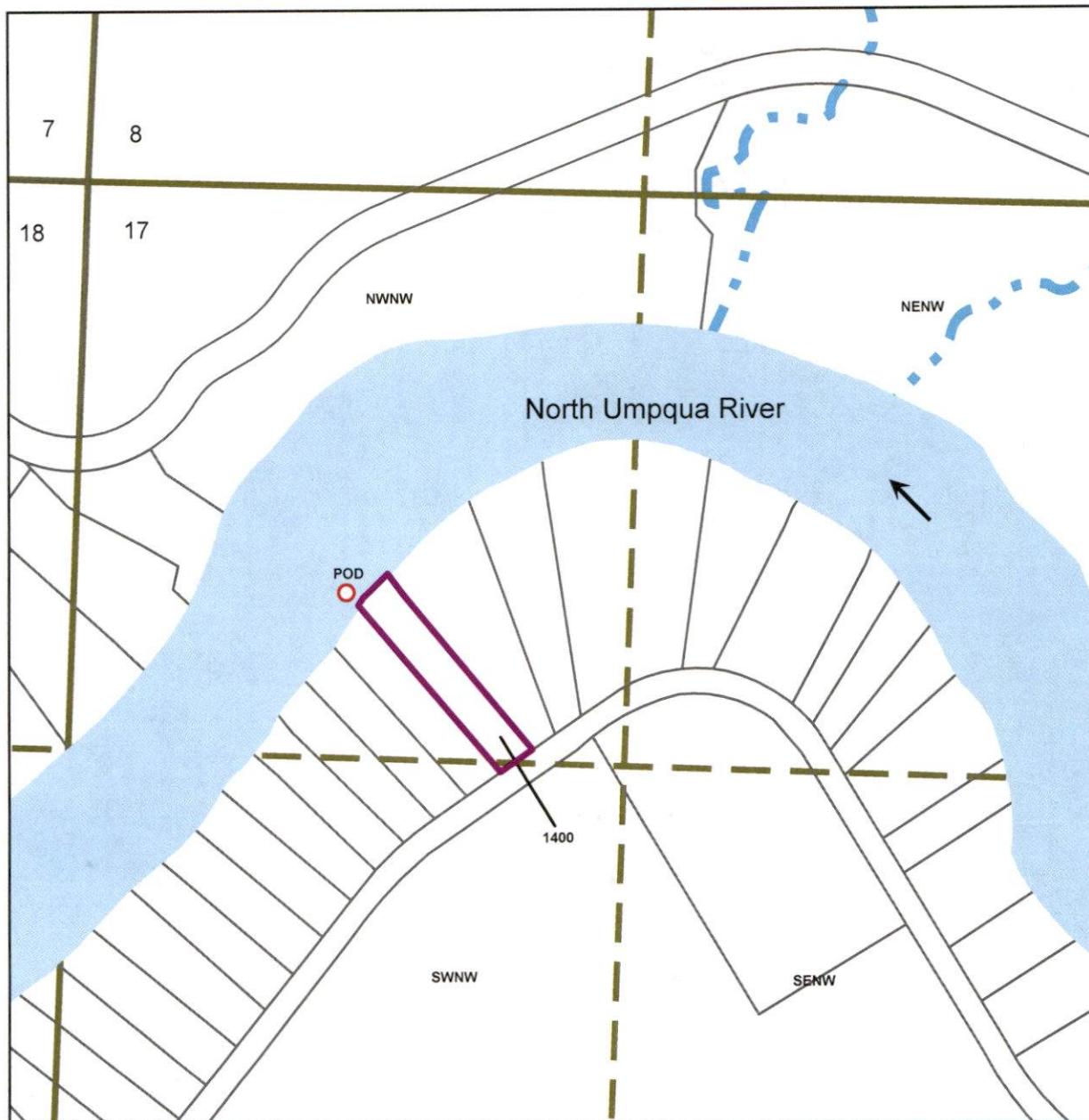
Douglas County

Scale: 1"=400'

RECEIVED

DEC 27 2021

OWRD



Point of Diversion is 936 ft South and 609 ft East from the
NW 1/4 Section Corner of 17

The purpose of this map is to identify
the location of a water right.
Not intended to show property ownership.

THIS MAP WAS PREPARED FOR ASSESSMENT PURPOSE ONLY.

NE1/4 SEC.17 T.26S. R.4W. W.M.
DOUGLAS COUNTY
1" = 200'

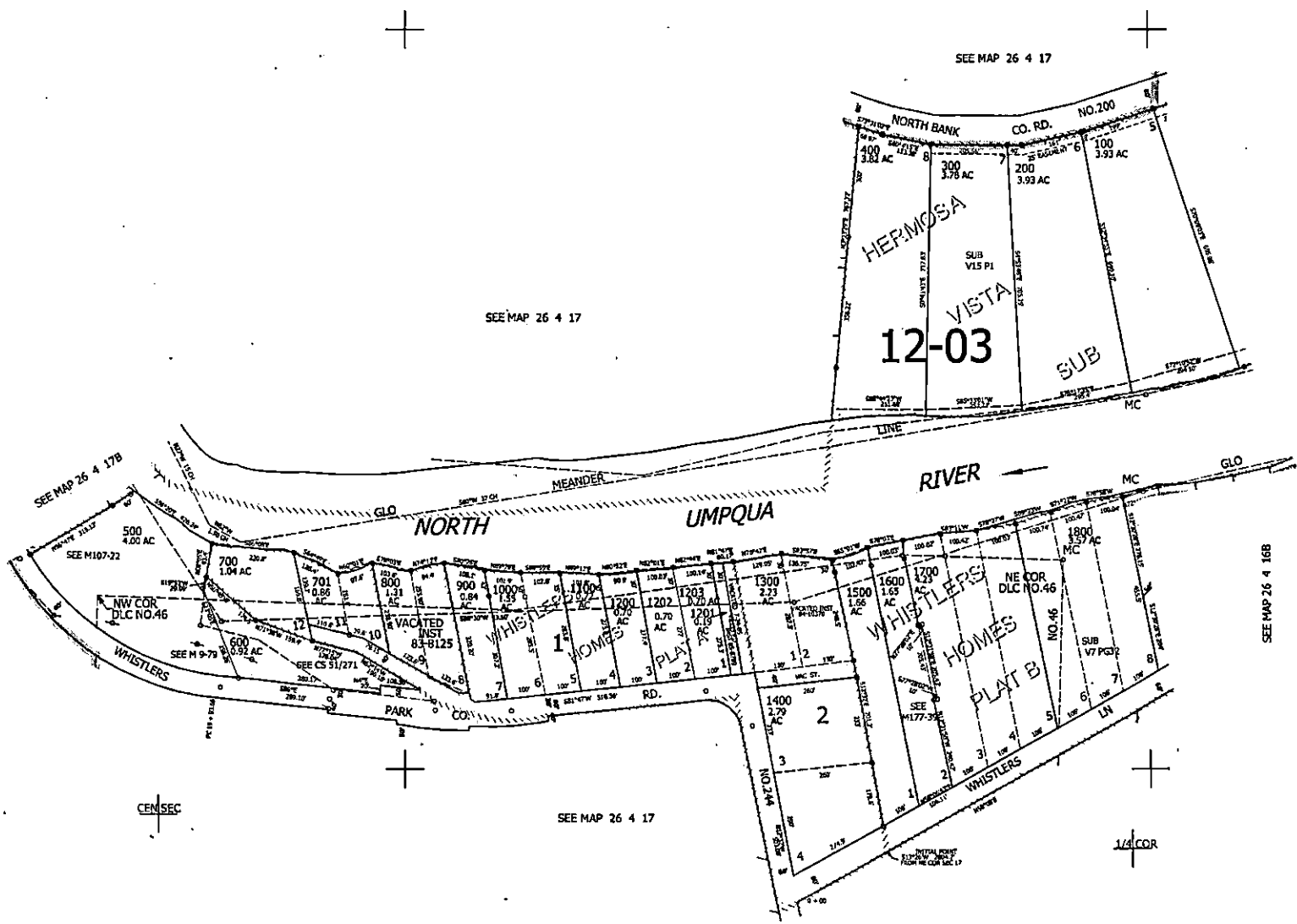
REVISED ON
7-15-20

26 4 17A

1/4 COR

8 9
17 16

CANCELLED NO'S
500M1 600M1 1701



SEE MAP 26 4 17

SEE MAP 26 4 17

SEE MAP 26 4 17B

SEE MAP 26 4 16B

SEE MAP 26 4 17

610,000

CEN SEC

1/4 COR

4,200,000

26 4 17A