



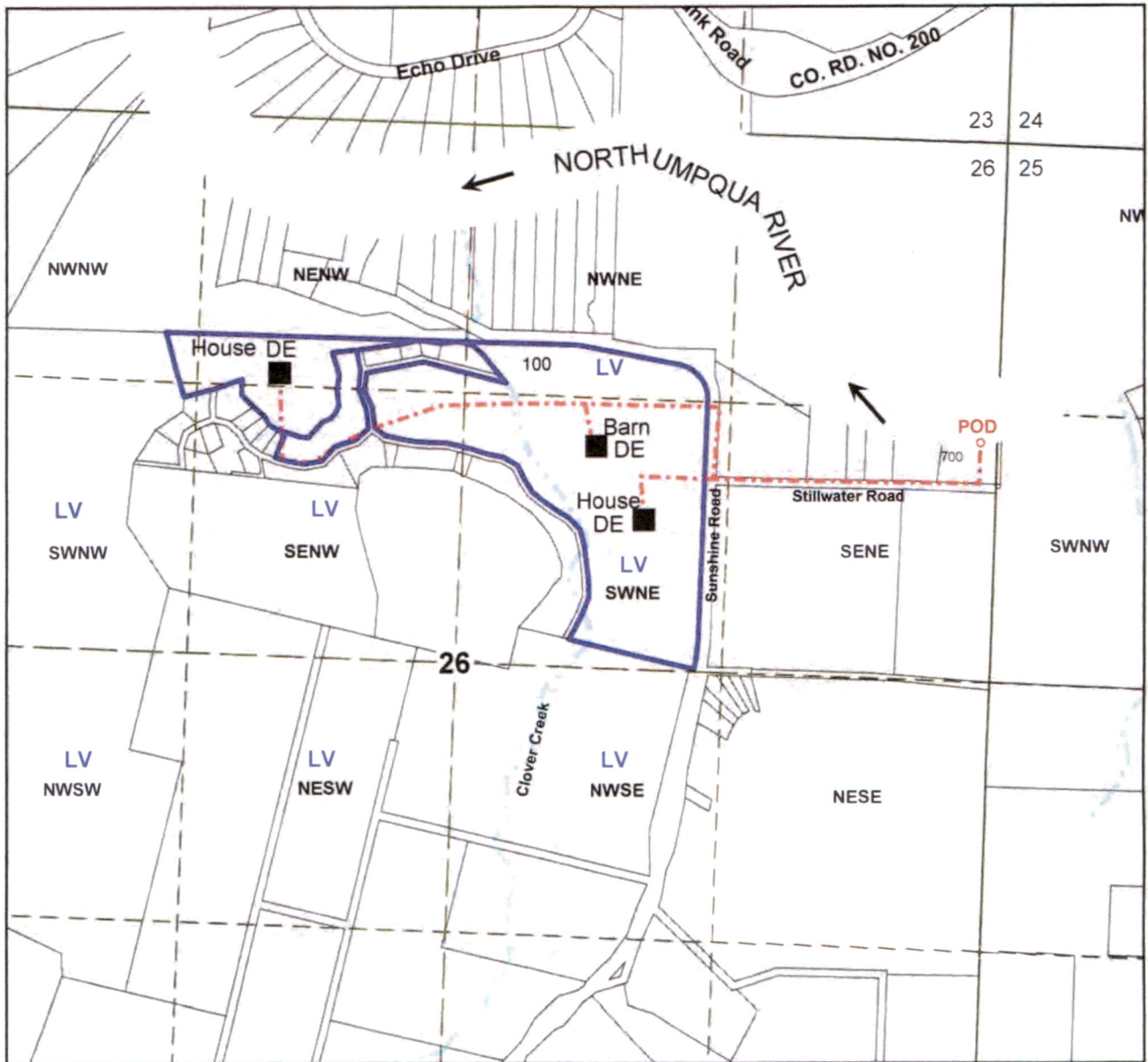
Surface Water Application Map

Kahn

T.26s R.5w Section 26

Douglas County

Scale: 1"=800'



LV = Livestock watering in this quarter-quarter section

DE = Domestic Expanded

North Umpqua River POD: 1475 ft South and 100 ft West from the NE Corner of Section 26

See attached tax assessor maps for complete tax lot information

This map prepared with assistance from Mary Burleson, Assistant Watermaster, District 15

RECEIVED

OCT 17 2022

OWRD

The purpose of this map is to identify
the location of a water right.
Not intended to show property ownership.

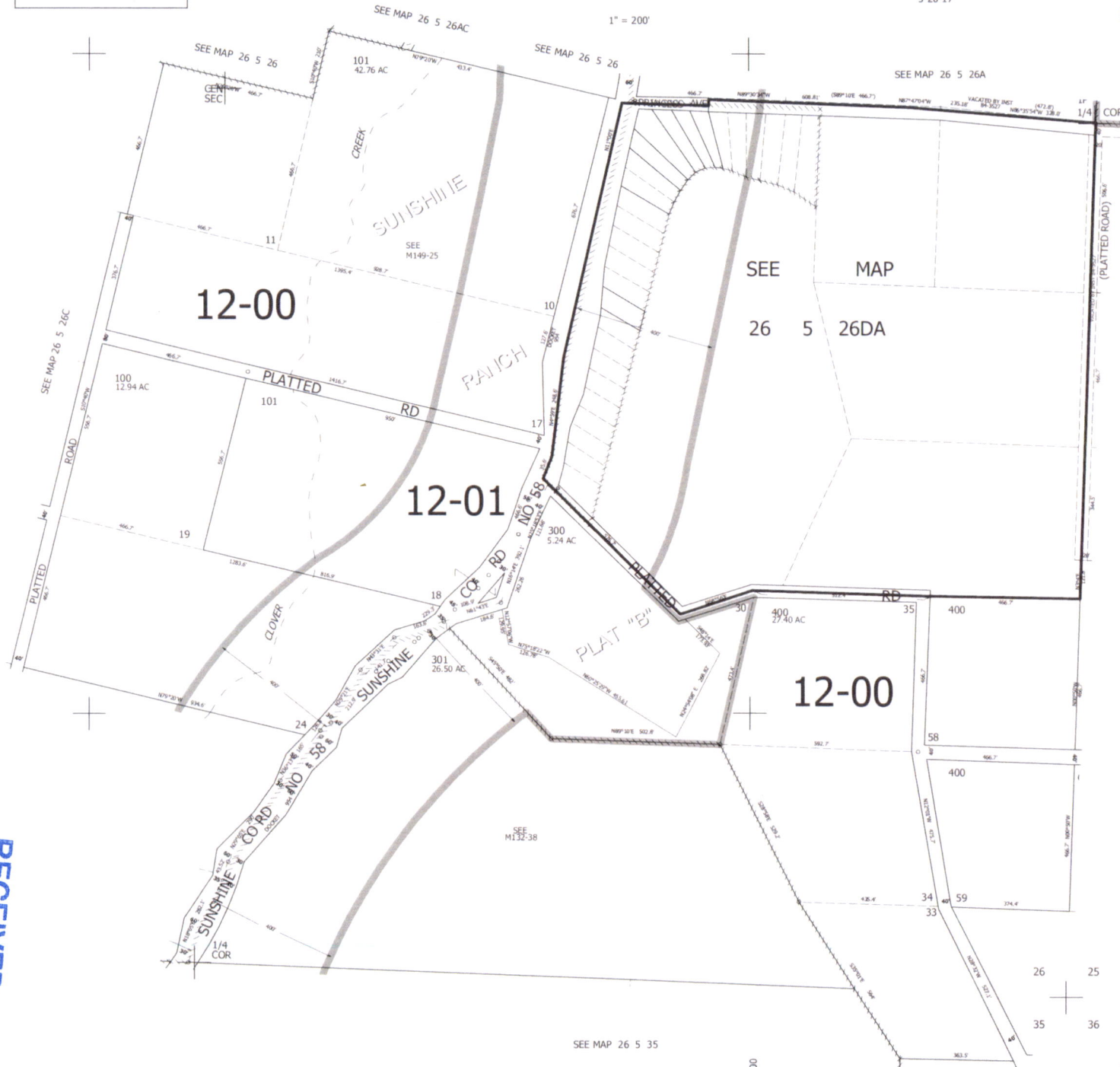
THIS MAP WAS PREPARED FOR ASSESSMENT PURPOSE ONLY.

SE1/4 SEC.26 T.26S. R.5W. W.M.
DOUGLAS COUNTY

REVISED ON
3-20-17

26 5 26D
& INDEX

1" = 200'



CANCELLED NO'S
200 500 600
302

SEE MAP 26 5 25C

598,000

SEE MAP 26 5 35

4,189,000

26 5 26D
& INDEX

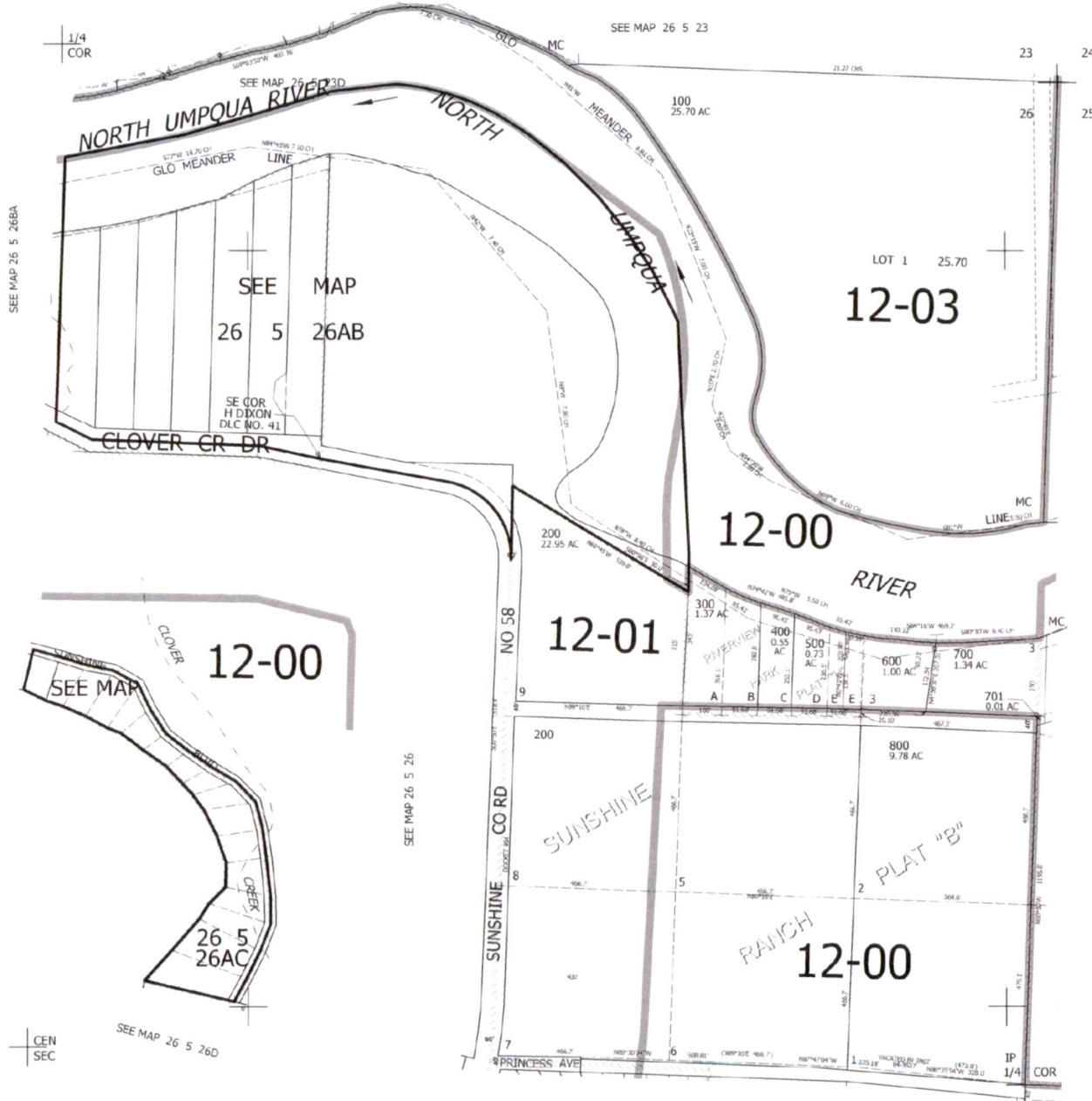
RECEIVED
OCT 17 2022
OWRD

THIS MAP WAS PREPARED FOR ASSESSMENT PURPOSE ONLY.

NE1/4 SEC.26 T.26S. R.5W. W.M.
DOUGLAS COUNTY
1" = 200'

REVISED ON
1-14-02

26 5 26A
& INDEX



CANCELLED NO'S

SEE MAP 26 5 25

600,000

SEE MAP 26 5 26DA

4-190,000

26 5 26A
& INDEX

RECEIVED
OCT 17 2022
OWRD

THIS MAP WAS PREPARED FOR ASSESSMENT PURPOSE ONLY.

SW1/4 SEC.26 T.26S. R.5W. W.M.
DOUGLAS COUNTY

1" = 200'

REVISED ON

26 5 26C

1/4 COR

CEN SEC

CANCELLED NO'S

SEE MAP 26 5 26

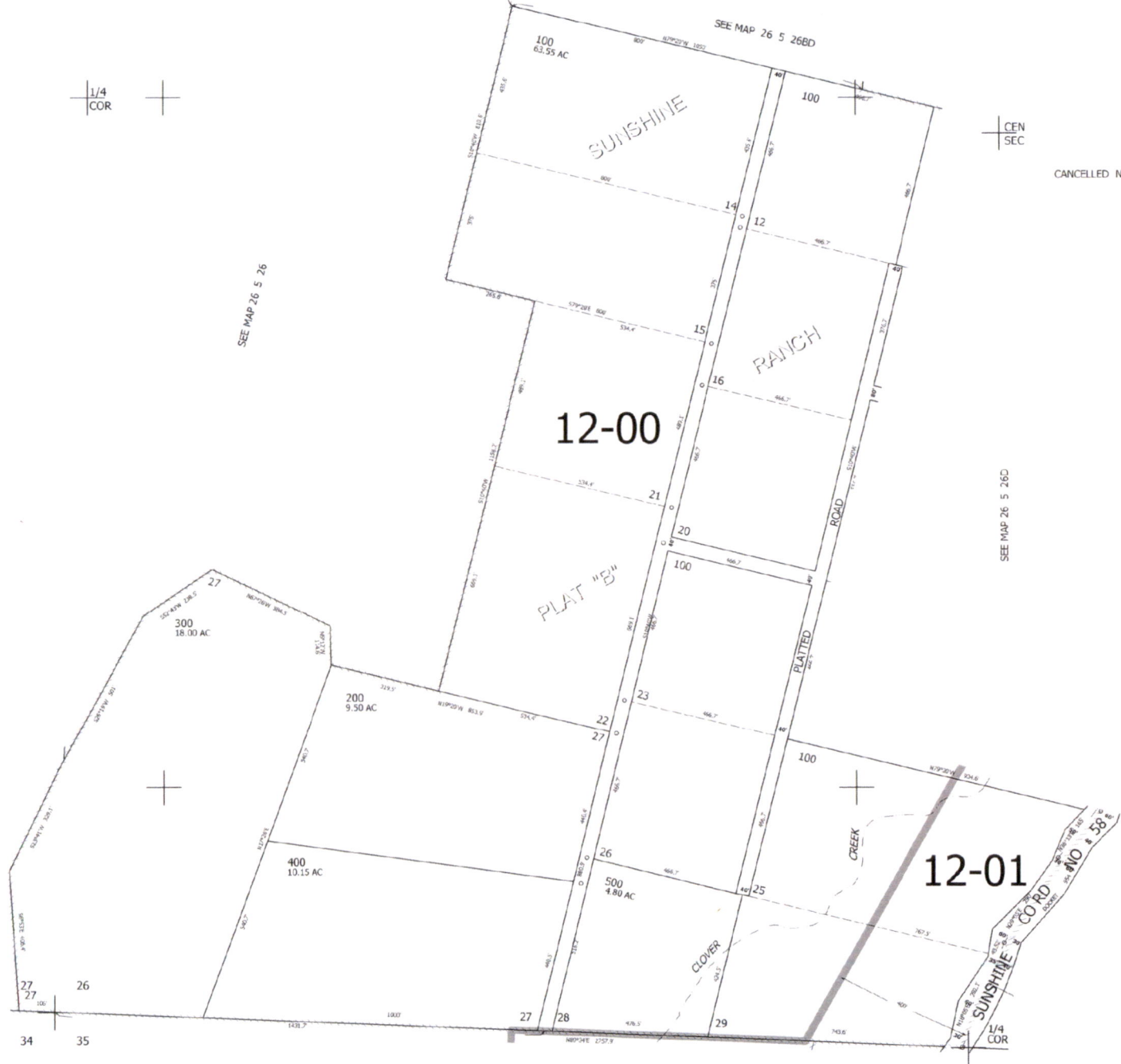
SEE MAP 26 5 26D

SEE MAP 26 5 27

SEE MAP 26 5 35

4,187,000

26 5 26C



RECEIVED
OCT 17 2022
OWRD

THIS MAP WAS PREPARED FOR ASSESSMENT PURPOSE ONLY.

SE1/4 NW1/4 SEC.26 T.26S. R.5W. W.M.
DOUGLAS COUNTY

REVISED ON

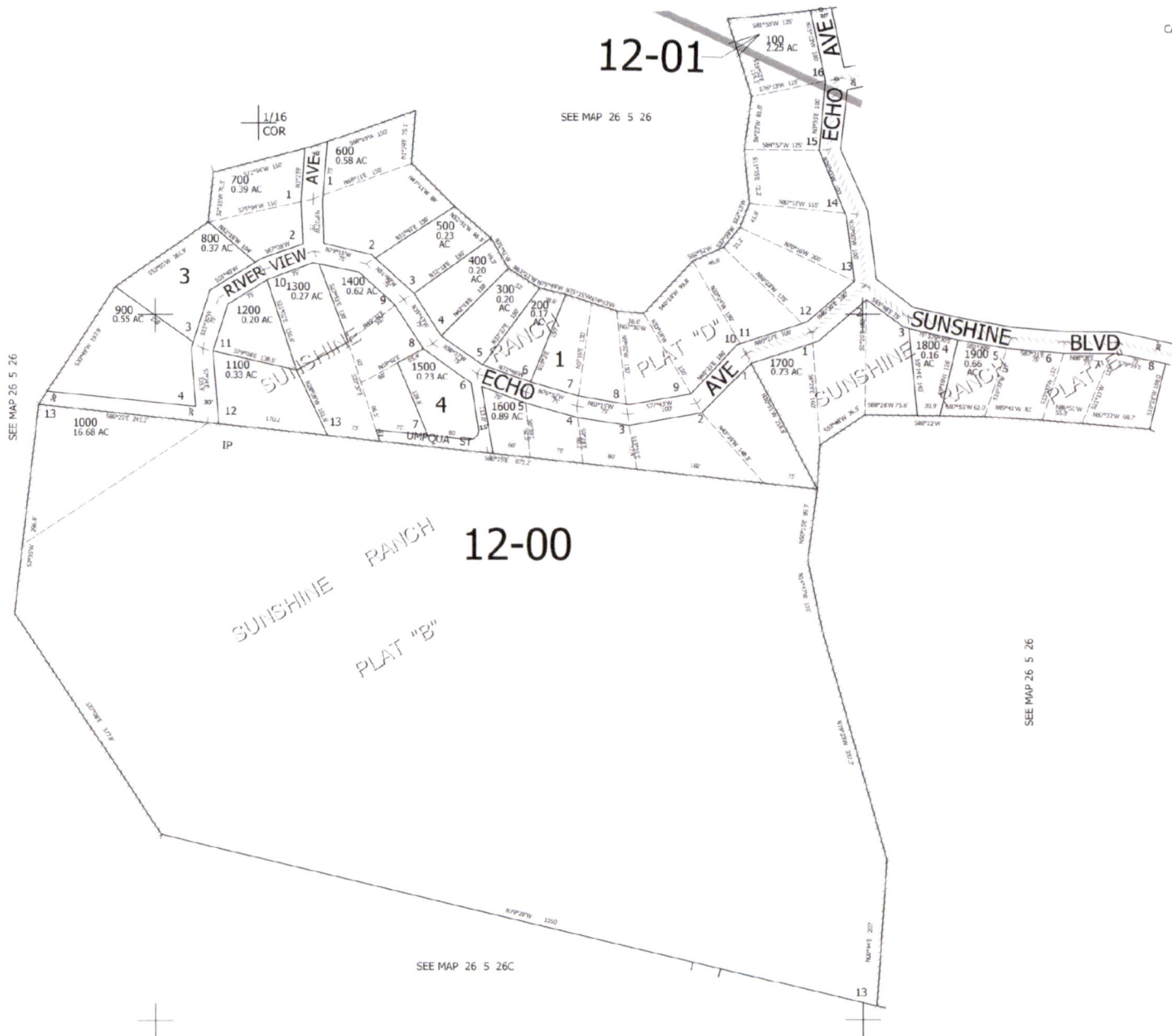
26 5 26BD

1" = 100'

CANCELLED NO'S

12-01

SEE MAP 26 5 26



SEE MAP 26 5 26

SEE MAP 26 5 26AC

SEE MAP 26 5 26

SEE MAP 26 5 26C

600,000

4,187,000

CEN
SEC

26 5 26BD

RECEIVED
OCT 17 2022
OWRD

THIS MAP WAS PREPARED FOR ASSESSMENT PURPOSE ONLY.

NE1/4 NW1/4 SEC.26 T.26S. R.5W. W.M.
DOUGLAS COUNTY
1" = 100'

REVISED ON

26 5 26BA

1/16
COR

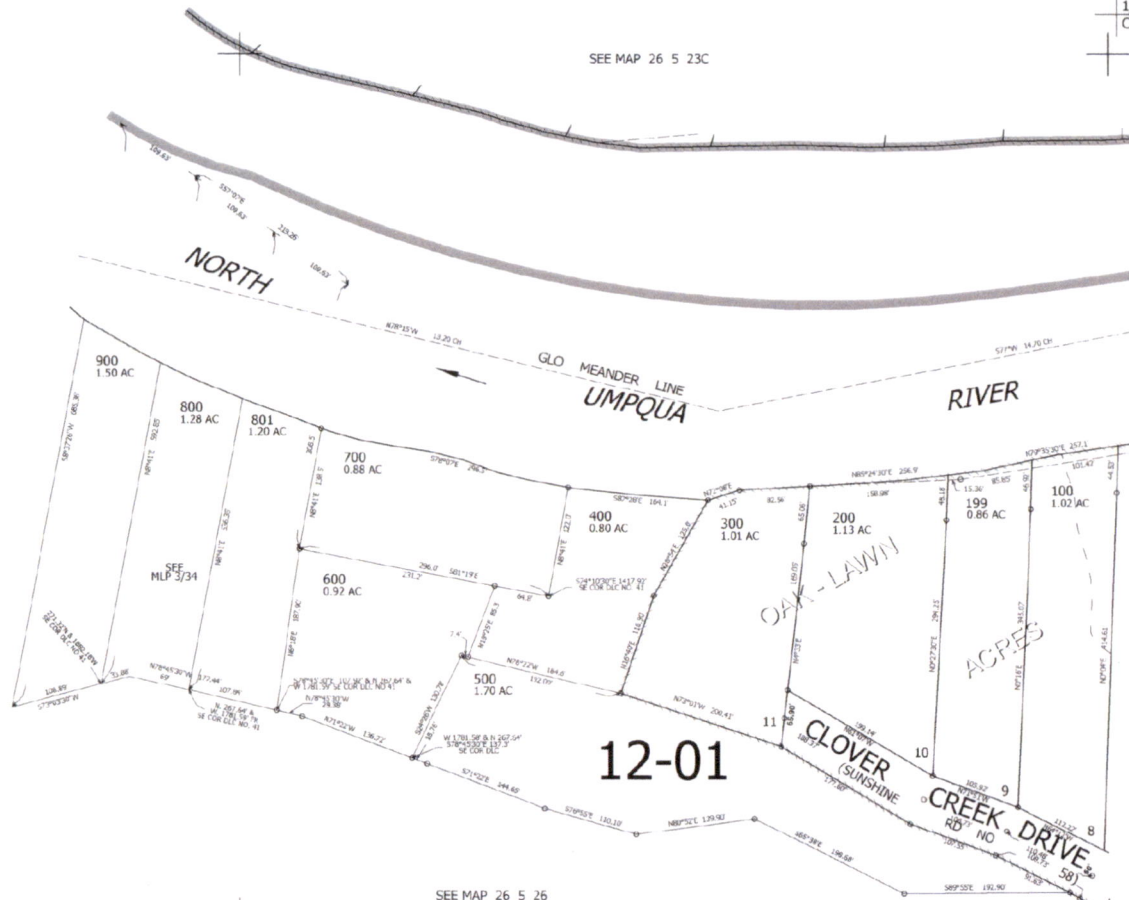
1/4
COR

SEE MAP 26 5 23C

CANCELLED NOS

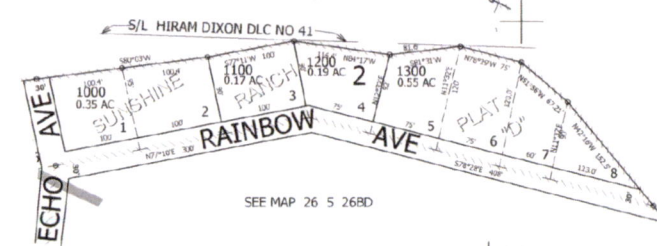
SEE MAP 26 5 26

SEE MAP 26 5 26AB



SEE MAP 26 5 26

12-01



SEE MAP 26 5 26BD

501,500

1/16
COR

1/16
COR

005,187,500

26 5 26BA

RECEIVED
OCT 17 2022
OWRPD

THIS MAP WAS PREPARED FOR ASSESSMENT PURPOSE ONLY.

SW1/4 NE1/4 SEC.26 T.26S. R.5W. W.M.
DOUGLAS COUNTY
1" = 100'

REVISED ON

26 5 26AC

1/16
COR

1/16
COR

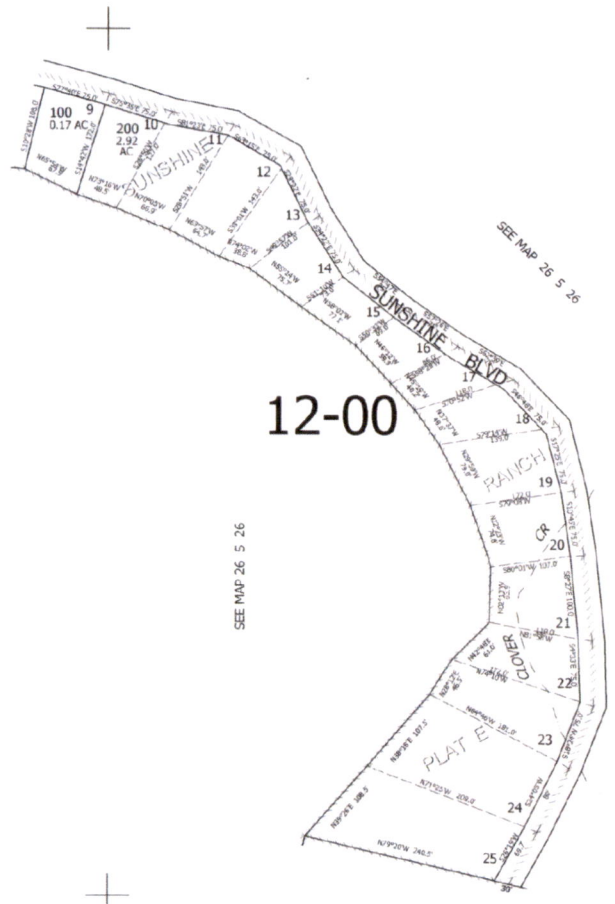
CANCELLED NO'S

SEE MAP 26 5 26BD

SEE MAP 26 5 26

SEE MAP 26 5 26

SEE MAP 26 5 26D



12-00

600,000

CEN
SEC

1/16
COR

4,185,500

26 5 26AC

RECEIVED
OCT 17 2022
OWRD

SEC.26 T.26S. R.5W. W.M.
DOUGLAS COUNTY

1" = 400'

SEE MAP 26 5 23

SEE MAP 26 5 23C

SEE MAP 26 5 23

24

25

CANCELLED NOS
301

SEE MAP 26 5 25

SEE MAP 26 5 25C

598,000

THIS MAP WAS PREPARED FOR
ASSESSMENT PURPOSE ONLY.

- CL PRIVATE RD
- 1. S2°27'E 74.4'
- 2. N85°54'E 142.75'
- 3. S59°02'30"E 123.65'
- 4. S86°28'30"E 137.66'
- 5. S13°02'30"E 137.66'
- 6. S7°58'E 89.68'
- 7. S64°48'30"E 91.04'
- 8. S10°16'E 90.23'
- 9. S77°02'E 100.07'
- 10. S57°02'E 100.07'
- 11. S29°05'30"E 114.84'
- 12. S10°33'30"E 107.36'
- 13. S10°33'30"E 107.36'
- 14. N70°21'E 100.05'
- 15. N51°52'30"E 123.35'

PORTION OF
26 5 26AC, BA, & BD
BOUNDARY

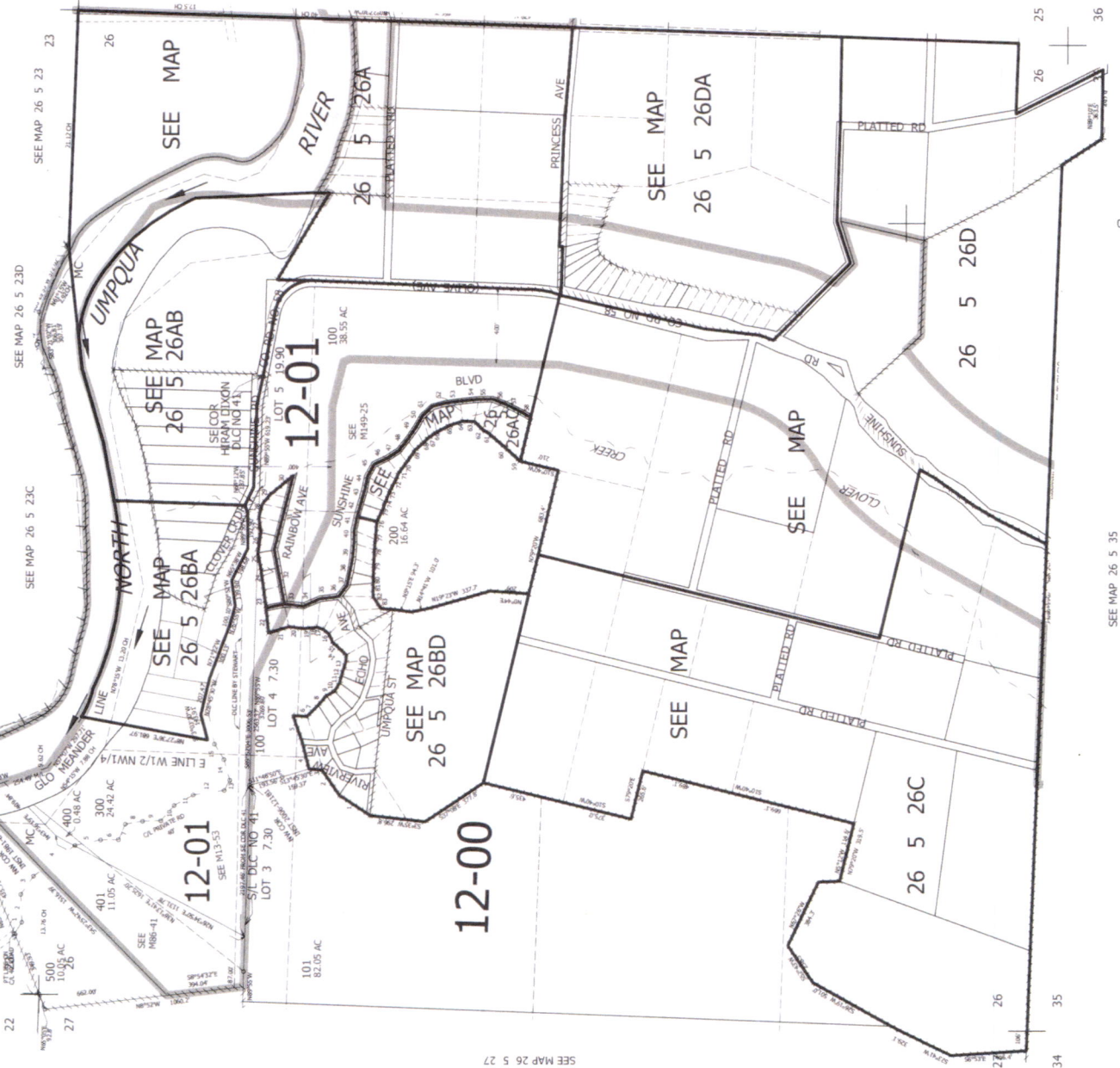
- 1. S30°49'W 147.9'
- 2. S53°05'W 161.9'
- 3. S23°35'W 70.5'
- 4. S88°09'W 150'
- 5. S48°09'W 150'
- 6. N1°29'E 75.1'
- 7. N47°11'W 89'
- 8. N31°41'W 96.3'
- 9. N31°41'W 96.3'
- 10. N61°21'W 52'
- 11. N79°49'W 38.6'
- 12. N79°49'W 38.6'
- 13. N79°49'W 38.6'
- 14. N87°30'W 38.6'
- 15. S40°18'W 99.9'
- 16. S40°18'W 99.9'
- 17. S31°59'W 31.2'
- 18. S22°15'W 41.9'
- 19. S11°35'E 72.2'
- 20. S11°35'E 72.2'
- 21. S19°52'E 114.1'
- 22. S81°55'W 135'
- 23. S80°03'W 100.4'
- 24. S77°11'W 100.4'
- 25. S77°11'W 100.4'
- 26. N84°17'W 114.4'
- 27. S11°31'W 81.6'
- 28. N52°56'W 67.2'
- 29. N52°56'W 67.2'
- 30. N42°16'W 152.5'
- 31. S78°28'E 80.8'
- 32. N1°12'E 100'
- 33. N73°35'E 100'
- 34. N26°43'W 100'
- 35. N10°W 100'
- 36. S79°30'E 75'
- 37. S79°30'E 75'
- 38. S82°39'E 75'
- 39. S87°21'E 75'
- 40. S95°58'E 75'
- 41. S95°58'E 75'
- 42. S77°40'E 75'
- 43. S79°35'E 75'
- 44. S81°13'E 75'
- 45. S81°13'E 75'
- 46. S59°02'E 75'
- 47. S34°22'E 75'
- 48. S54°47'E 75'
- 49. S54°47'E 75'
- 50. S62°39'E 75'
- 51. S46°48'E 75'
- 52. S17°25'E 75'
- 53. S17°25'E 75'
- 54. S82°7'E 100'
- 55. S4°33'E 75'
- 56. S18°24'W 75'
- 57. S18°24'W 75'
- 58. S26°19'W 69.7'
- 59. N39°26'E 108.5'
- 60. S38°18'E 107.5'
- 61. S38°18'E 107.5'
- 62. N42°48'E 81'
- 63. N42°48'E 81'
- 64. N22°23'W 74.8'
- 65. N22°23'W 74.8'
- 66. N37°37'W 48.6'
- 67. N49°19'W 40.2'
- 68. N46°12'W 59.9'
- 69. N46°12'W 59.9'
- 70. N55°24'W 75.7'
- 71. N74°02'W 38.8'
- 72. N63°57'W 64.7'
- 73. N63°57'W 64.7'
- 74. N27°16'W 64.5'
- 75. N65°54'W 67.9'
- 76. N87°22'W 98.7'
- 77. N87°22'W 98.7'
- 78. N89°41'W 83.6'
- 79. S87°55'W 62.9'
- 80. S88°22'W 30.9'
- 81. S85°48'W 75.6'
- 82. S85°48'W 75.6'
- 83. S92°5'E 64.6'

SEE MAP 26 5 27

RECEIVED

OCT 17 2022

OWRD



4,189,000

SEE MAP 26 5 35