



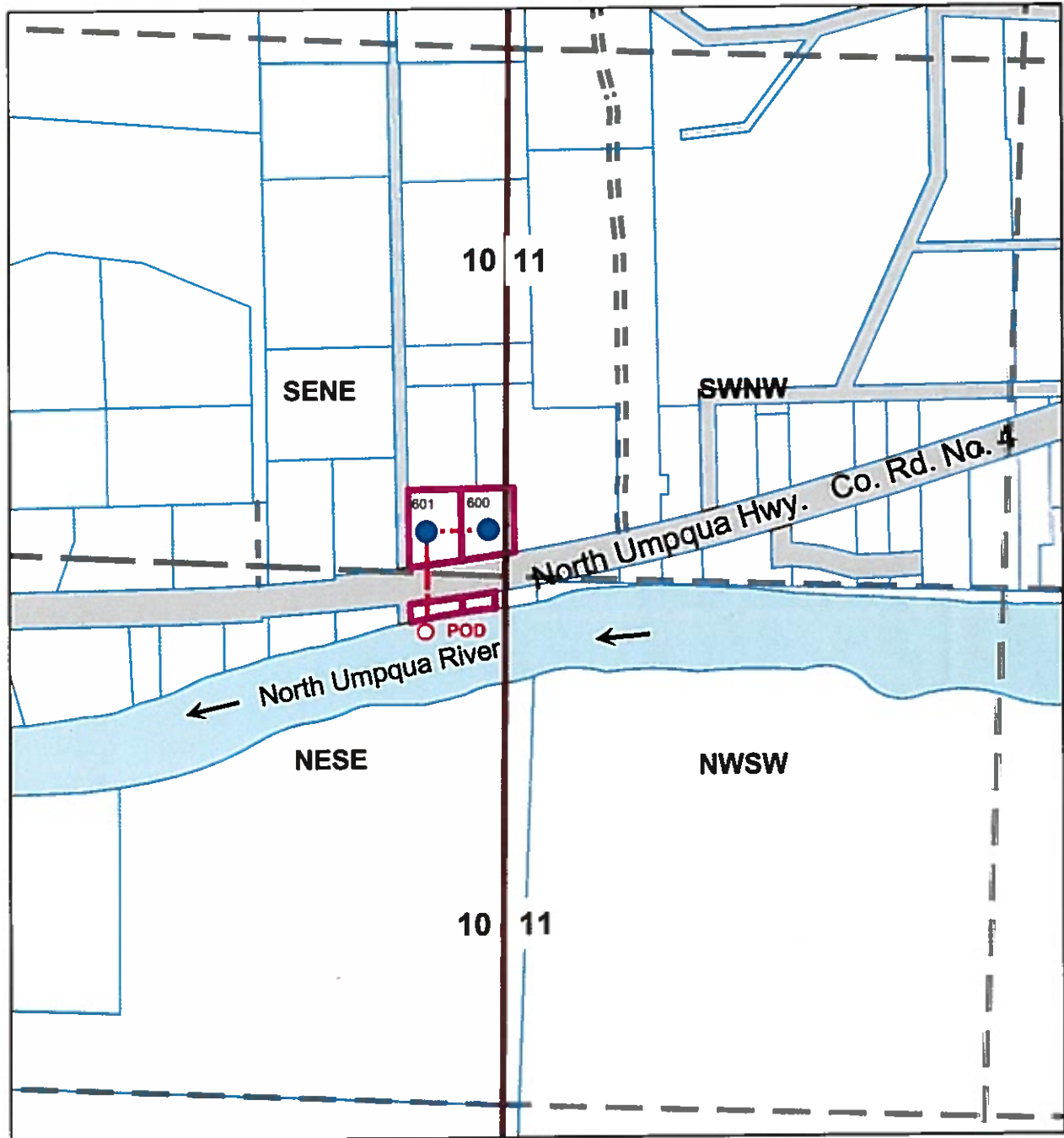
**Surface Water Application
Slack, Gilliland
T.26S R.3W Section 10
Douglas County**

RECEIVED

OCT 15 2020

OWRD

Scale: 1"=400'



Point of Diversion is 148 ft South and 200 ft West of the East 1/4 Section Corner of 10

The purpose of this map is to identify
the location of a water right.
Not intended to show property ownership.

RECEIVED

OCT 15 2020

OWRD

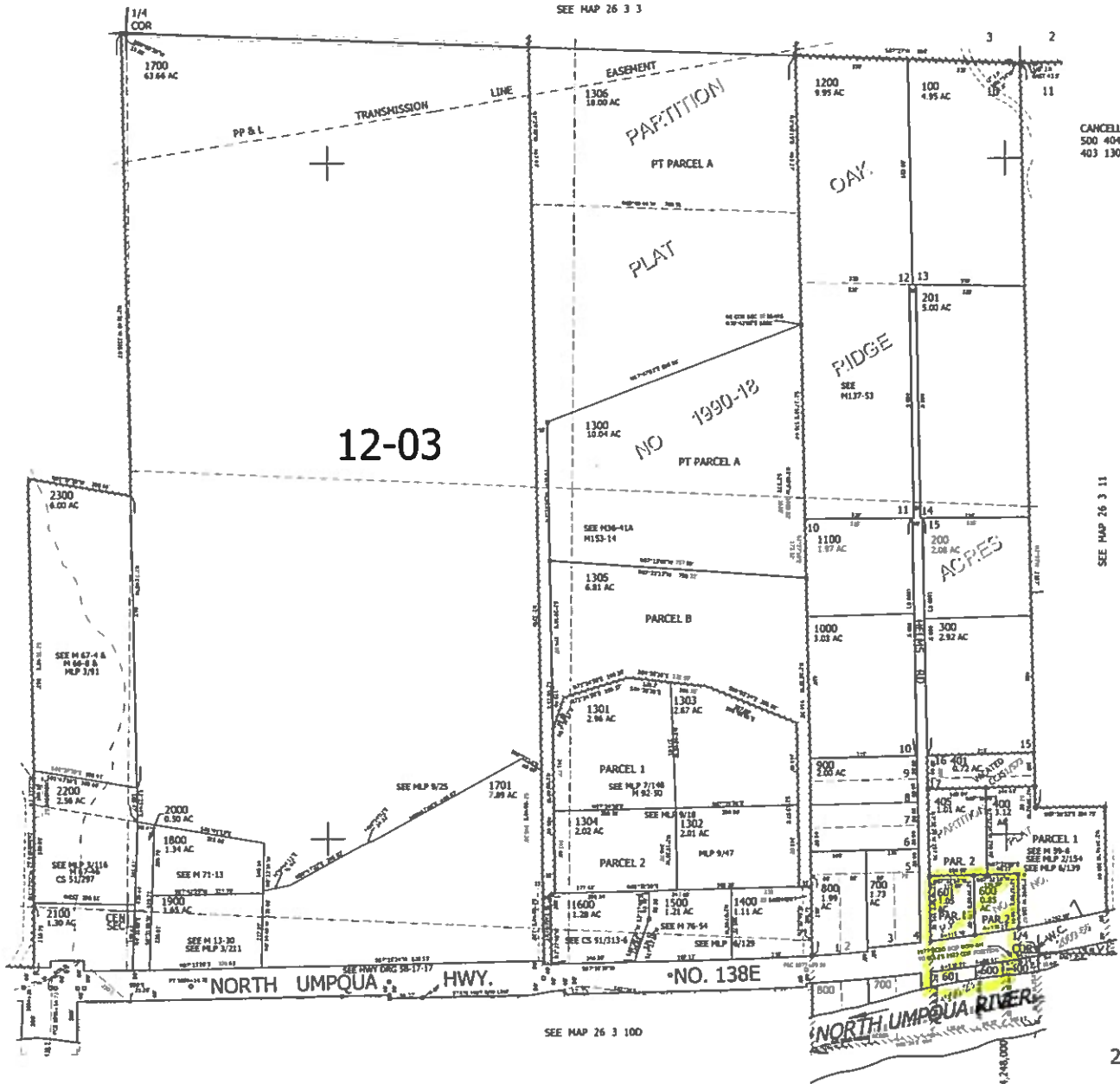
THIS MAP WAS PREPARED FOR ASSESSMENT PURPOSE ONLY.

NE1/4 SEC.10 T.26S. R.3W. W.M.
DOUGLAS COUNTY
1" = 200'

REVISED ON
8-21-19

26 3 10A

SEE MAP 26 3 3



CANCELLED NOS
500 404 402
403 1307 1702

SEE MAP 26 3 10

SEE MAP 26 3 11

SEE MAP 26 3 11BC

614,000

SEE MAP 26 3 10D

26 3 10A