

RECEIVED





AUG 07 2023

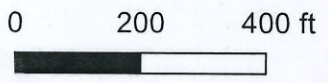
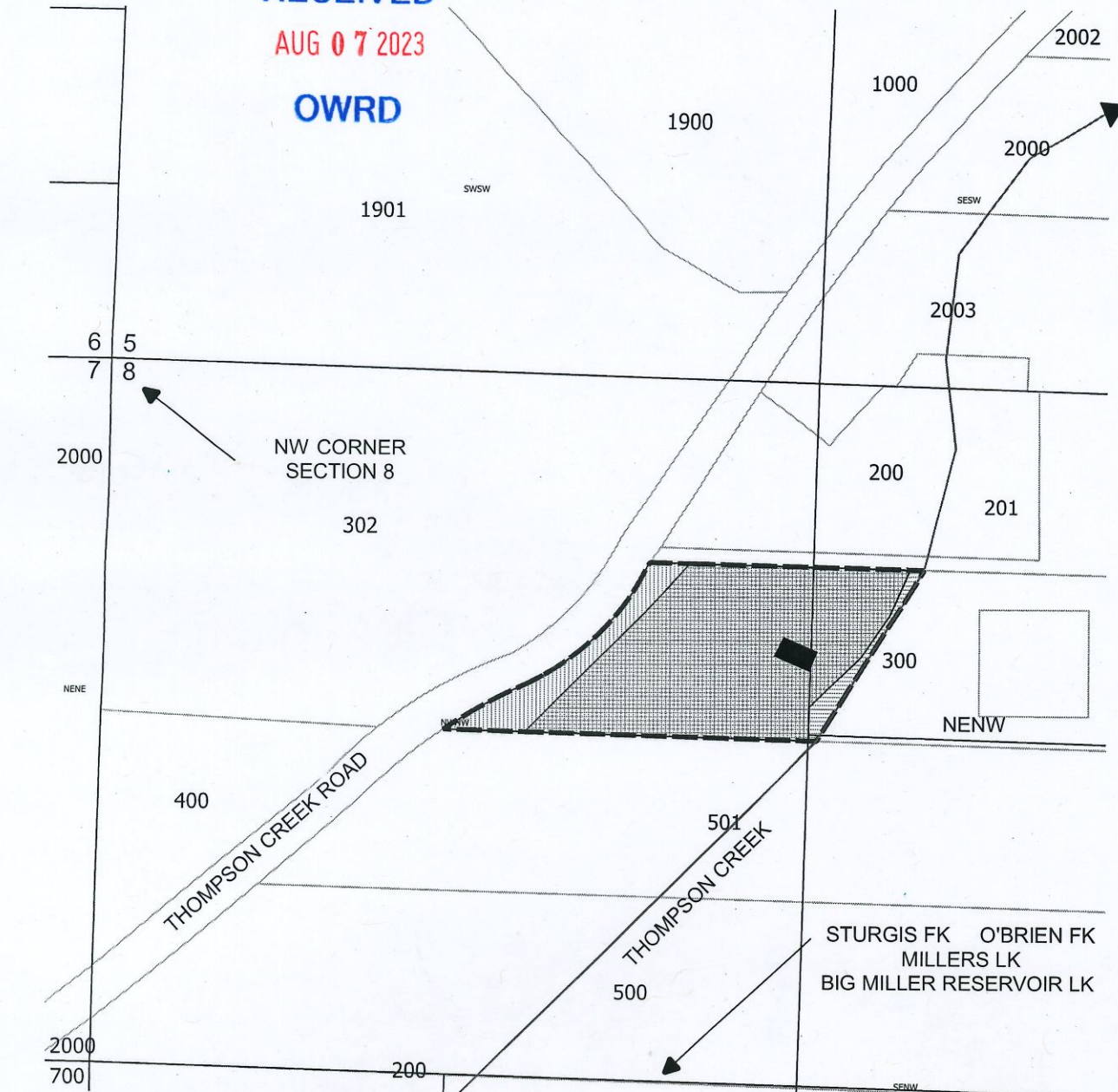
OWRD

TYLER ROLEN
RSF ENTERPRISES LLC
4635 THOMPSON CREEK RD
JACKSONVILLE, OR 97530

SITUATED IN
SECTION 8, TOWNSHIP 39 S,
RANGE 4 W
JACKSON COUNTY OREGON

LEGEND

-  C-16465 / C-32984 PRIMARY IRRIGATION
3.60 ACS
0.82 ACS NE NW
2.78 ACS NW NW
-  C-93252 / C-93253 / C-932453 SUPPLEMENTAL IRRIGATION
3.97 ACS
0.64 ACS NE NW
3.33 ACS NW NW
-  R-15534 SOURCE POINT OF DIVERSION
505' S 1280' E NW CORNER SECTION 8
-  R-15534 SECONDARY PERMIT SUPPLEMENTAL IRRIGATION (MAY-SEP)
PRIMARY NURSERY (JAN-DEC)
4.15 ACS
0.82 ACS NE NW
3.33 ACS NW NW



This map is not intended to provide legal dimensions or locations of property ownership lines

ParsonsWater Consulting LLC
rick.parsons@parsonwater.com
541.499.0257 303.667.5067