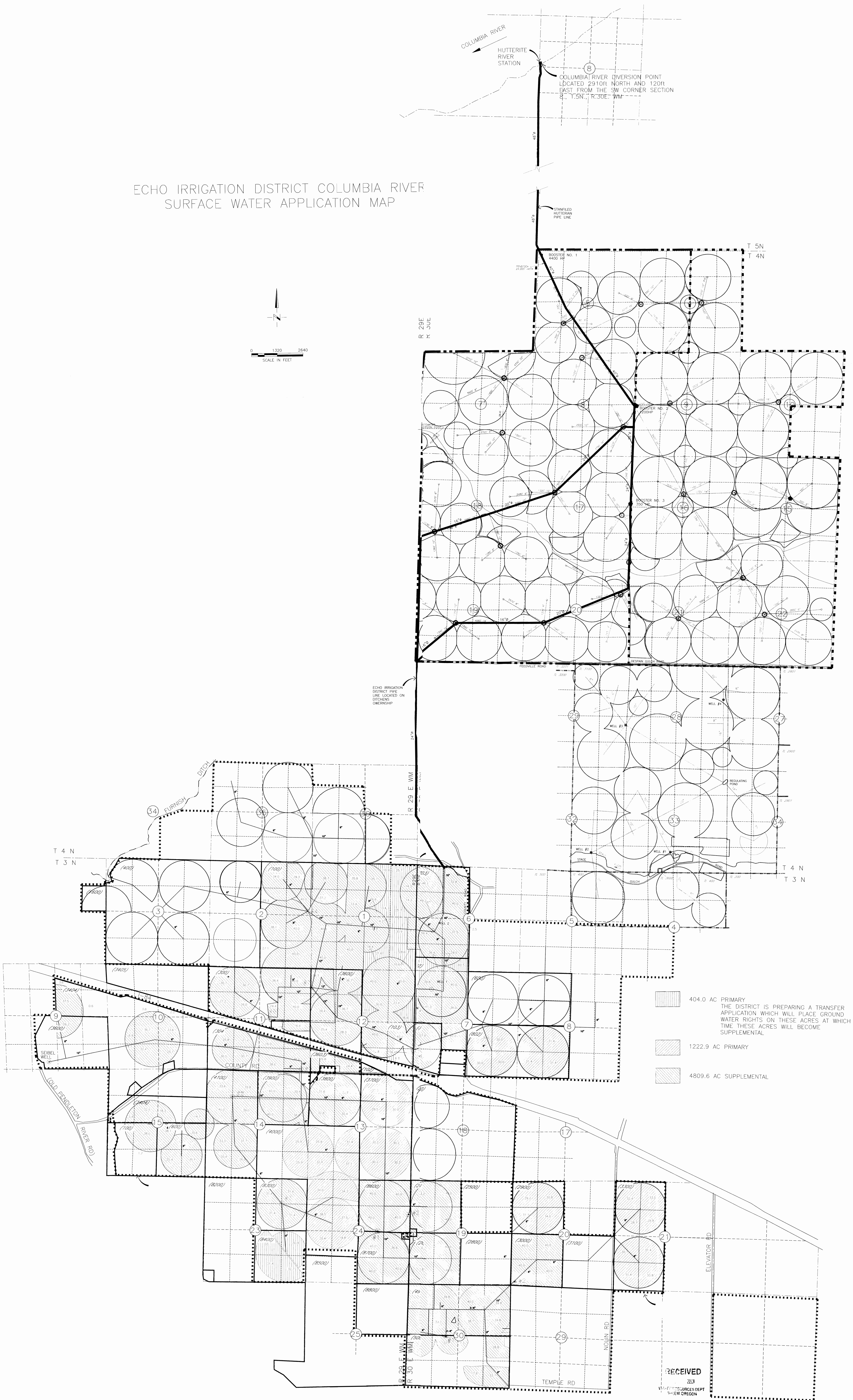
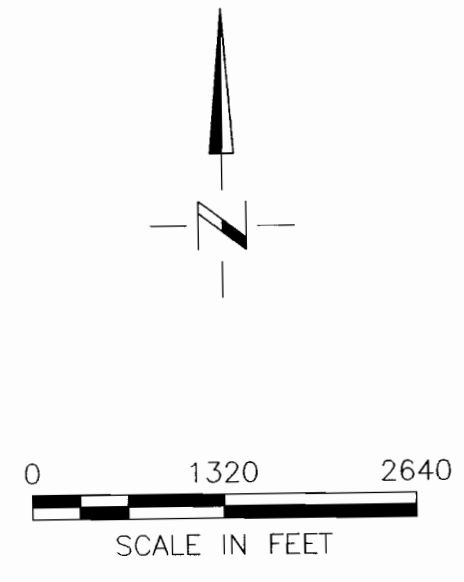


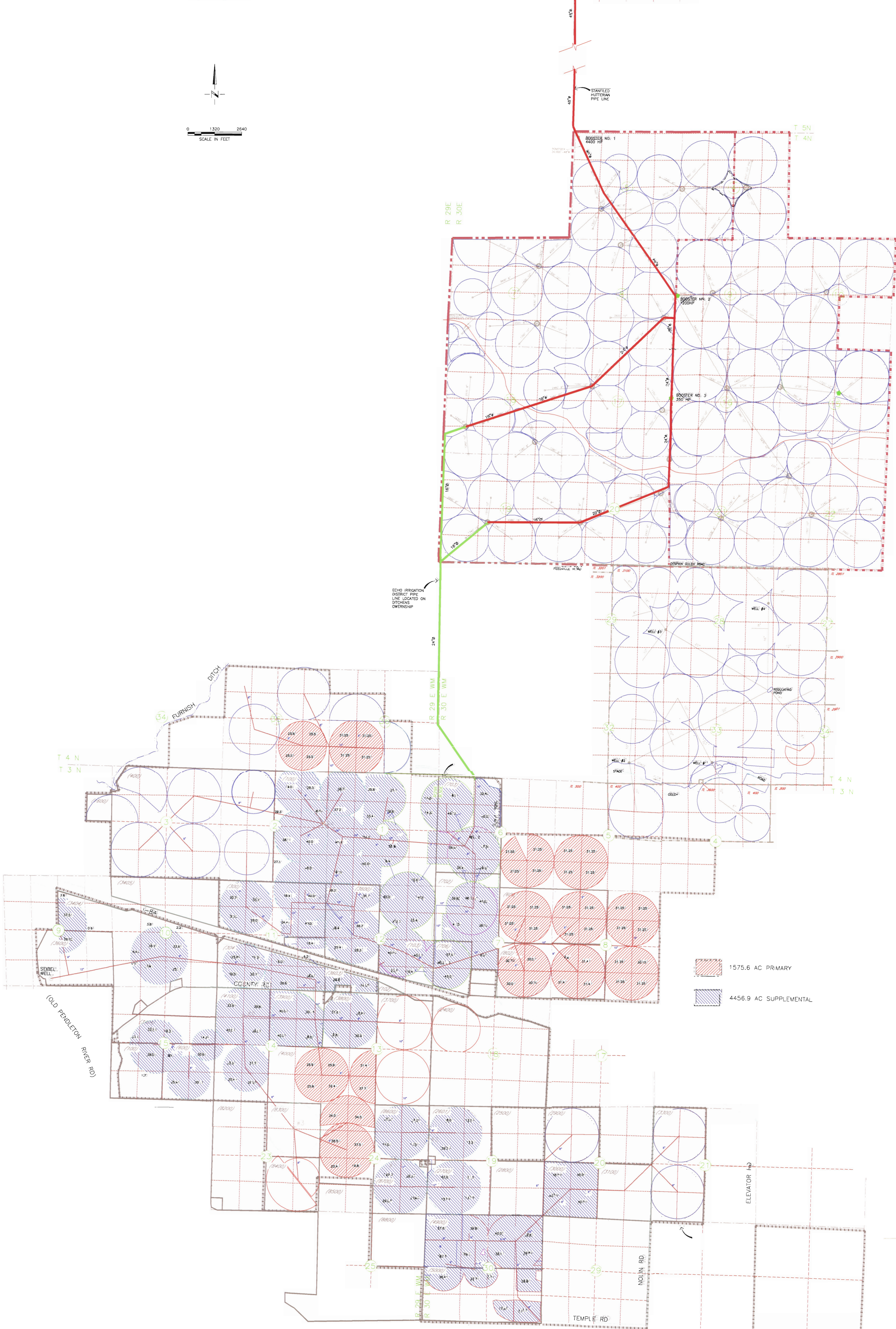
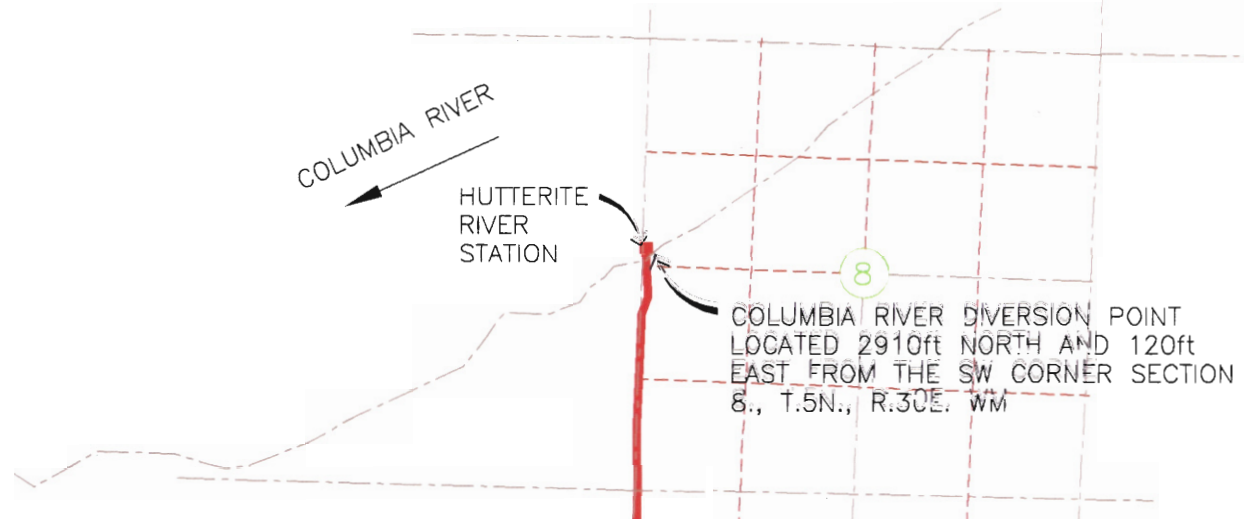
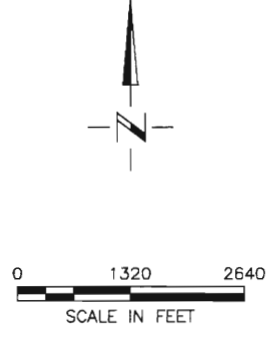
ECHO IRRIGATION DISTRICT COLUMBIA RIVER
SURFACE WATER APPLICATION MAP



- 404.0 AC PRIMARY
THE DISTRICT IS PREPARING A TRANSFER APPLICATION WHICH WILL PLACE GROUND WATER RIGHTS ON THESE ACRES AT WHICH TIME THESE ACRES WILL BECOME SUPPLEMENTAL
- 1222.9 AC PRIMARY
- 4809.6 AC SUPPLEMENTAL

RECEIVED
2003
WATER RESOURCES DEPT
STATE OF OREGON

ECHO IRRIGATION DISTRICT COLUMBIA RIVER
 SURFACE WATER APPLICATION MAP
 5/20/09

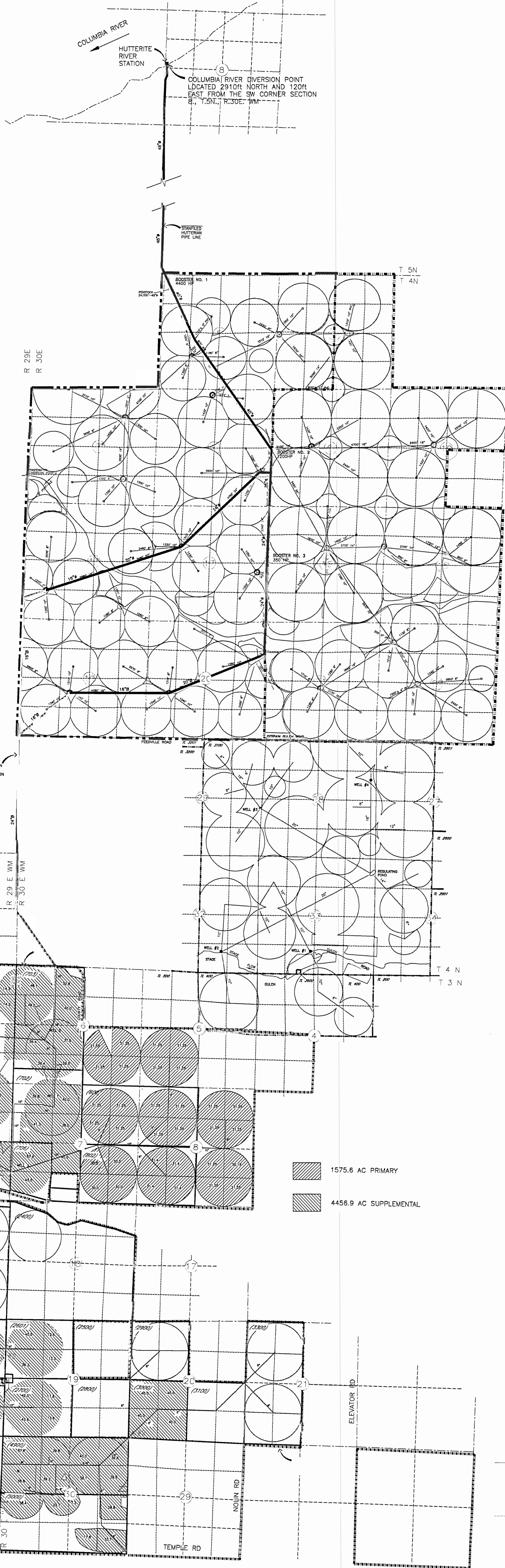
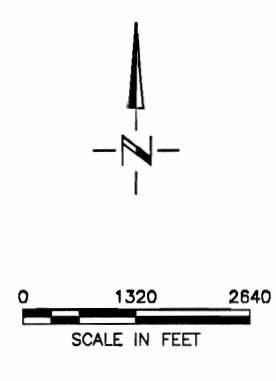


RECEIVED
 MAY 26 2009
 WATER RESOURCES DEPT
 SALEM, OREGON

240

S-87074

ECHO IRRIGATION DISTRICT COLUMBIA RIVER
 SURFACE WATER APPLICATION MAP
 5/20/09



- 1575.6 AC PRIMARY
- 4456.9 AC SUPPLEMENTAL

RECEIVED
 MAY 26 2009
 WATER RESOURCES DEPT
 SALEM, OREGON

240

S-87074