

351E05  
pdf created  
06/03/2006 07:33:19


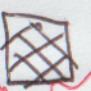
THIS MAP WAS PREPARED FOR  
ASSESSMENT PURPOSE ONLY

SECTION 5 T35S R1E WM TL 400  
JACKSON COUNTY  
1" = 800'

35 1E 5

Application for multipurpose  
pond in the name of  
Jon Reed Horse

Project location is  
280' East and 400' south  
of the NW/SW 1/4 corner  
of Section 5 T35S R1E WM  
Tax Lot 400 Jackson County  
.578 Acre Feet

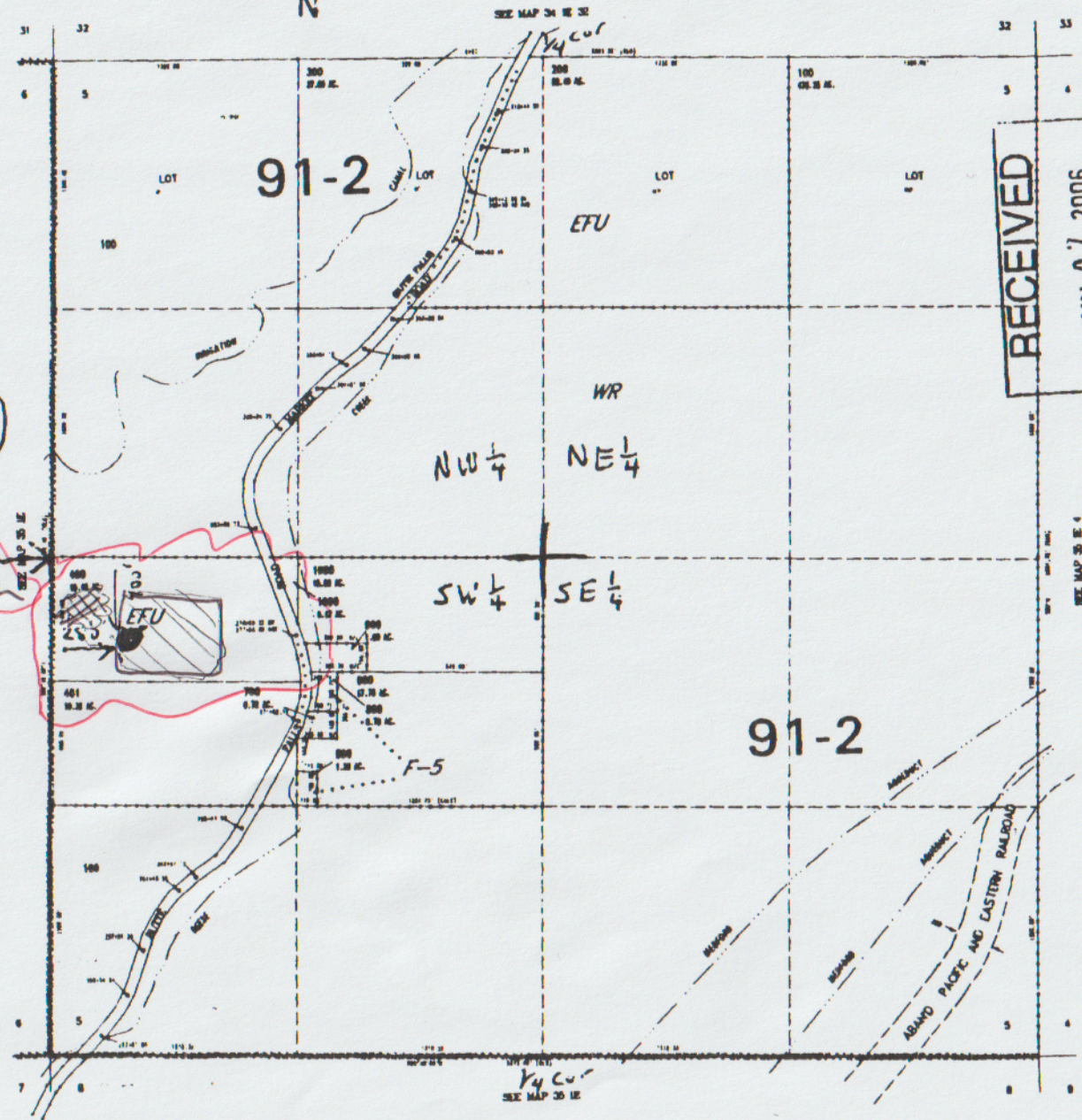
 - POW  
10 acres - irrigation  
 1 Acre - nursery  
RECEIVED BY CWRD

APR 27 2016

SALEM, OR

rev. 6/8/23

46TABLE 8 / MAP-TWP/SHR/06/07/00 PLATORA  
CREATED MONDAY OCTOBER 23 8:00:32 PM BY LINDSEERL



RECEIVED  
JUN 07 2006  
WATER RESOURCES DEPT  
SALEM, OREGON

appnt R-86613

35 1E 5