

POD: 990' South & 60' West  
from the South Corner Section 32,  
T2S R45E W.M.

Approximate  
Location of  
Pipebank

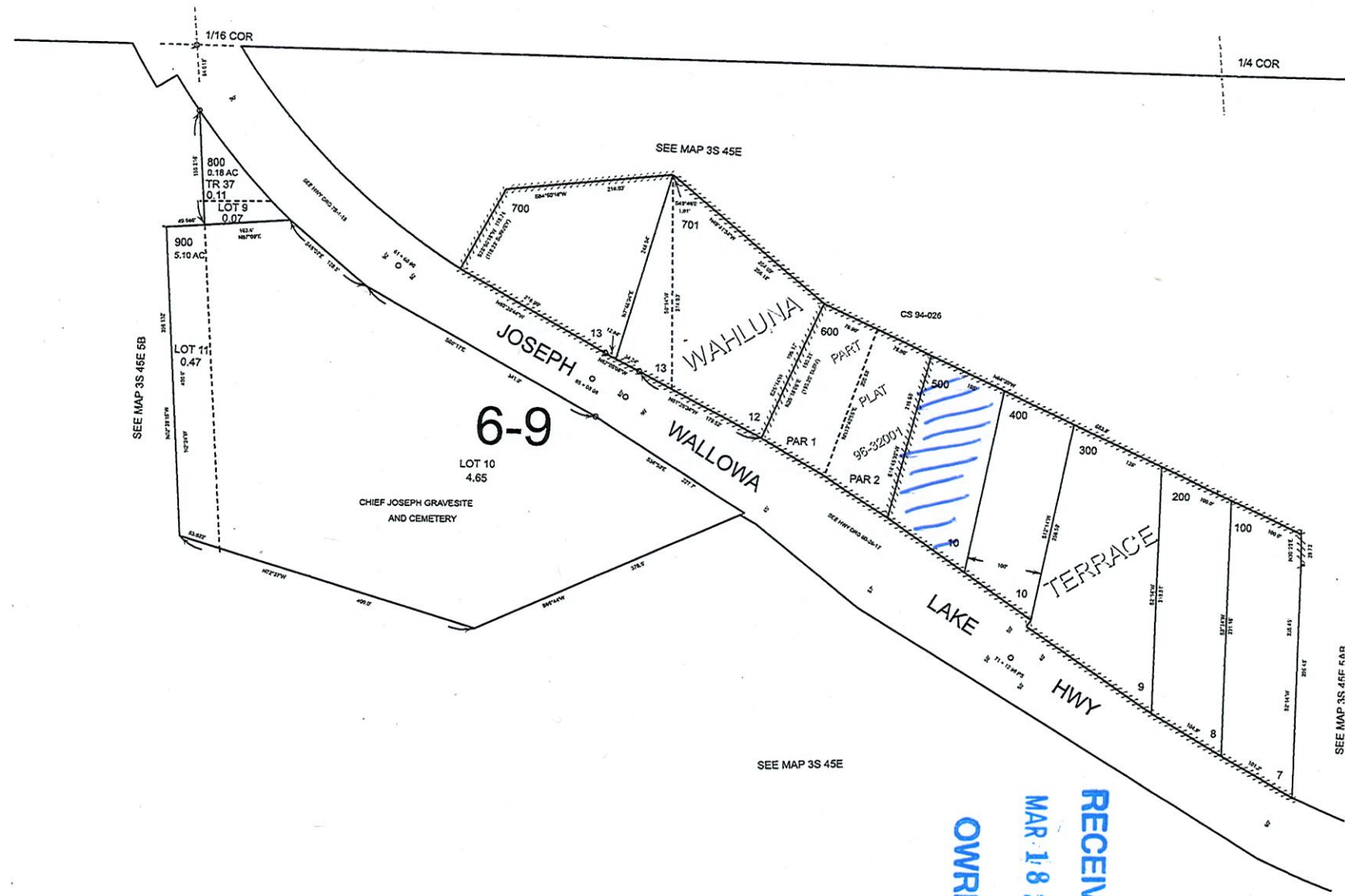
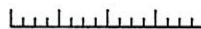
**Kreiger Application Map: Domestic & 0.25 acre irrigation, Source: Wallowa Lake Reservoir**

Map Disclaimer:  
This product is for informational purposes  
and may not have been prepared for, or be suitable  
for legal, engineering, or surveying purposes. Users of  
this information should review or consult the  
primary data and information sources to ascertain  
the usability of the information.  
This map is not intended to display property lines

Disclaimer: This listing is the result of a manual search of the records of the Watermaster's Plat Cards and the  
WRIS database. The listing has not been field checked. That a right is of record is no guarantee that it has not  
been abandoned under the conditions of ORS 540.610. The plat card records of listed by the 40.0 acre quarter-  
quarter within a section. If the water right listed within a quarter-quarter is on more than one tax lot, this office has  
not itemized that water rights for each tax lot - only a survey could accurately depict how much of the water rights  
are on each tax lot.

POU 0.25	D7_TWP	HWY
Kreiger_Property	D7_SEC	RD
	D7_QQ	
	Stream, perennial	
	Stream, intermittent	
	Canal	
	Connector	
	Lake	

Scale 1in=400ft



SEE MAP 3S 45E 6B

SEE MAP 3S 45E

SEE MAP 3S 45E

SEE MAP 3S 45E 6A

RECEIVED  
MAR 18 2021  
OWRD