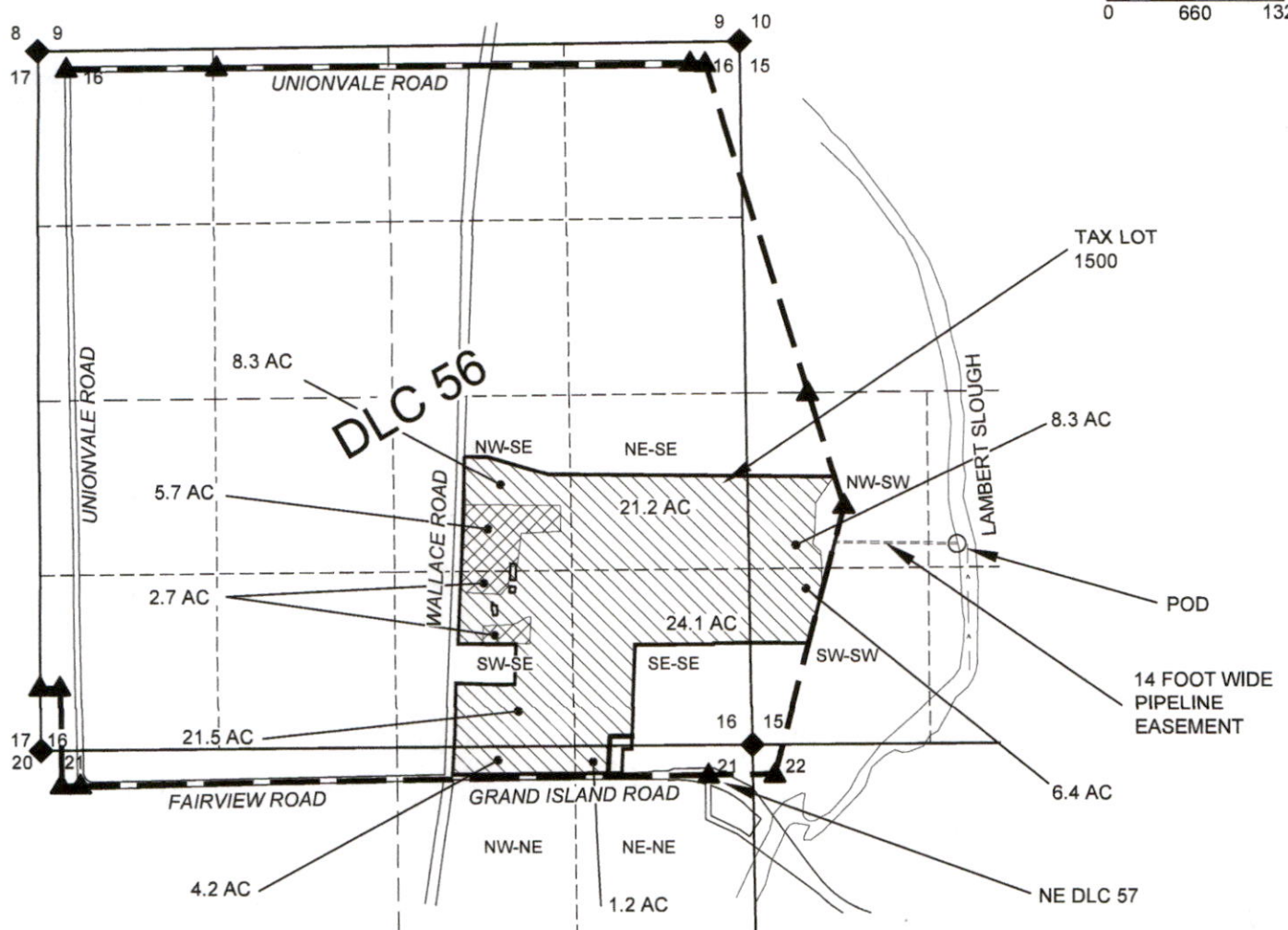
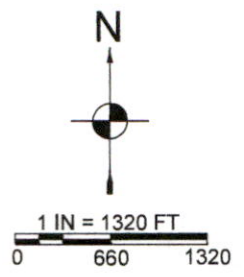


Map For Surface Water Application

Sections 15, 16, & 21, T5S, R3W, Yamhill County



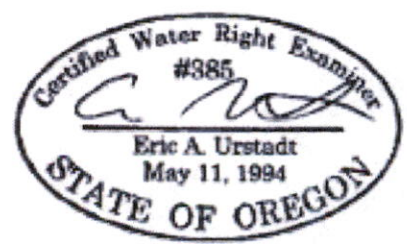
THE POD IS 1715' NORTH AND 1860' EAST FROM THE NE CORNER DLC 57.

- NOTES:
- THIS MAP IS NOT INTENDED TO PROVIDE LEGAL DIMENSIONS OR LOCATIONS OF PROPERTY OWNERSHIP LINES.
 - PROPERTY LINES ARE BASED ON COUNTY SURVEY CS-11487. SECTION QUARTER-QUARTER, AND DONATION LAND CLAIM LINES ARE BASED ON THE TAX ASSESSOR MAP FOR SECTION 16, T5S, R3W.

LEGEND

- DONATION LAND CLAIM (DLC) CORNER
- SECTION CORNER
- POINT OF DIVERSION (POD)
- STREAM OR SURFACE DRAINAGE
- TAX LOT LINE
- SECTION LINE
- QUARTER-QUARTER LINE
- DLC LINES
- IRRIGATION
- SUPPL (TO 85048)

RECEIVED
NOV 30 2023
OWRD



Exp. Jun 2024

MAP BY:
ASPEN RURAL LAND CONSULTING
ERIC URSTADT, PE, PLS
971-250-1520
OCT 2023
WVL-SBKing3E