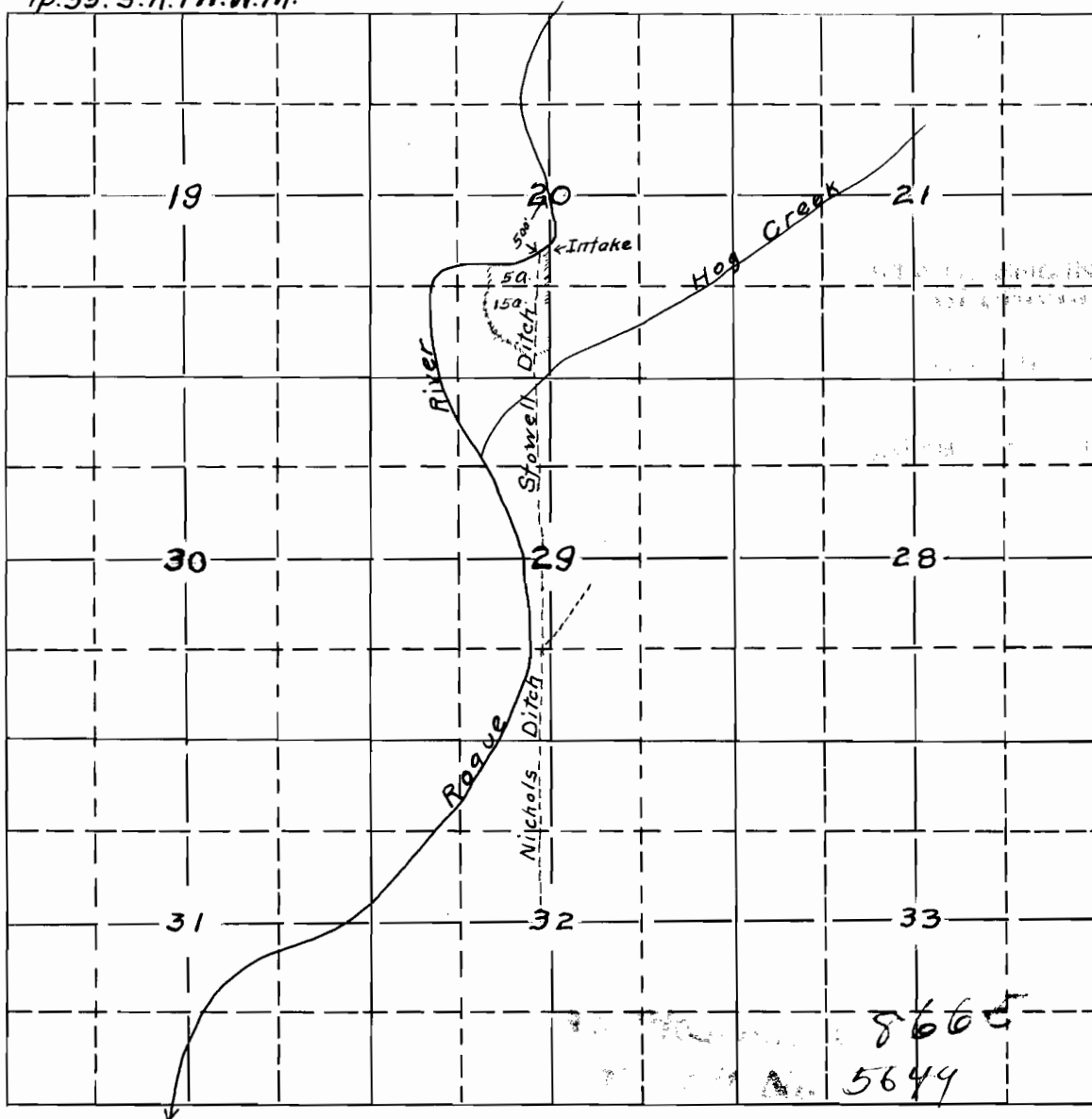


—MAP—

Accompanying application of GEO. H. STOWELL of Eagle Point, Jackson County, Oregon for permit to the waters of Rogue River Jackson County, Oregon.

—September, 1922.—

Tp. 35. S. R. 1 W. W. M.



Map made from plat of Geo. H. Stowell lands, the same correctly showing the lands to be irrigated, together with streams and ditches in immediate vicinity.

Fred N. Cummings, C.E.  
by F. E. Nichols, Deputy.