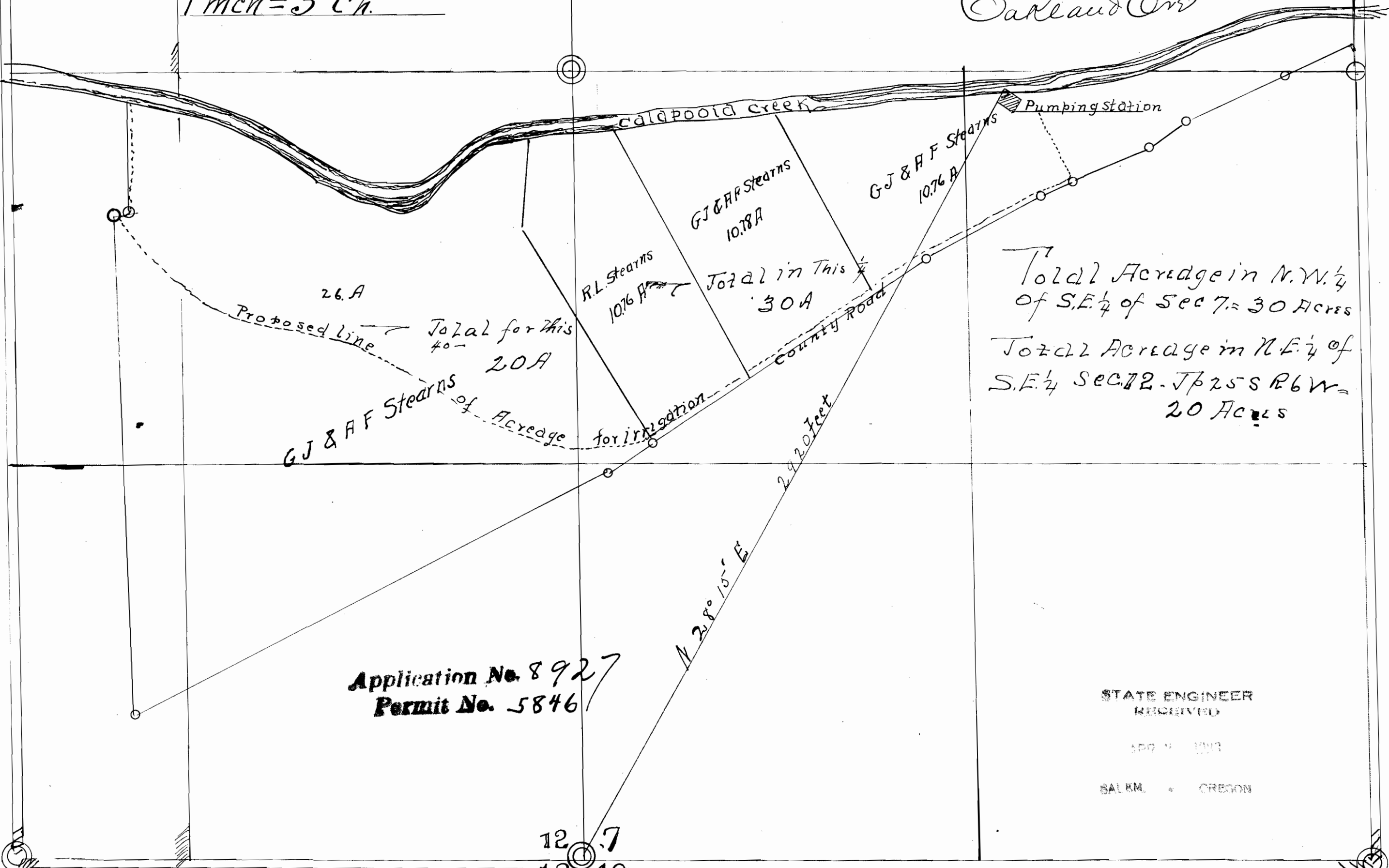


T 25 S R 6 W

T 25 S R 5 W

Map showing Acreage of irrigable Lands of A. F. Stearns, et al.  
for which permit is being asked.  
Prepared by, E. W. Cooper, C. & M. E.  
Oakland Ore

1 inch = 5 Ch.



26.A

Proposed line

Total for this  
40 -  
20A

GJ & A.F. Stearns of Acreage for irrigation

R.L. Stearns  
10.76 A

GJ & A.F. Stearns  
10.78A

Total in this  
30A

County Road

2920 feet

N 28° 15' E

Total Acreage in N.W. 1/4  
of S.E. 1/4 of Sec 7 = 30 Acres  
Total Acreage in N.E. 1/4 of  
S.E. 1/4 Sec. 12. T 25 S R 6 W =  
20 Acres

Application No. 8927  
Permit No. 5846

STATE ENGINEER  
RECEIVED

APR 11 1913

SALMON, OREGON

12 .7  
13 16