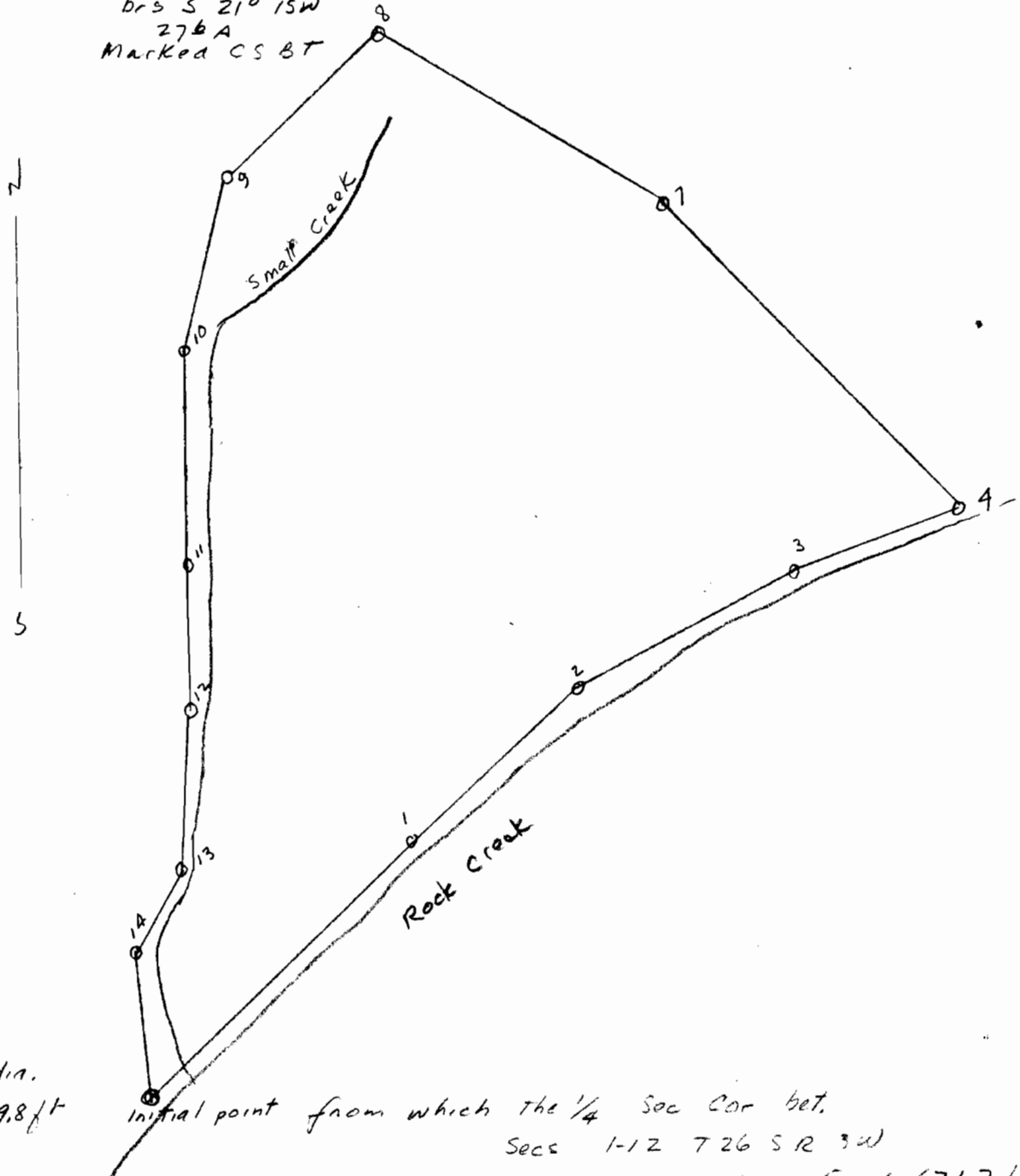


Proposed site of  
Fish Hatchery

Sec 1 T26 S R 3W W47

1" = 100 ft

A Cedar 24" in dia  
brs S 21° 15W  
276 A  
Marked CS BT



A fir 24" in dia.  
S 55° 30W 19.8 ft  
marked CS B.T.

Initial point from which the 1/4 Sec cor bet.

Secs 1-12 T26 S R 3W

brs South 1957 ft + East 671.2 ft

App 8806  
Per 5890

Copied from Blueprint in file