

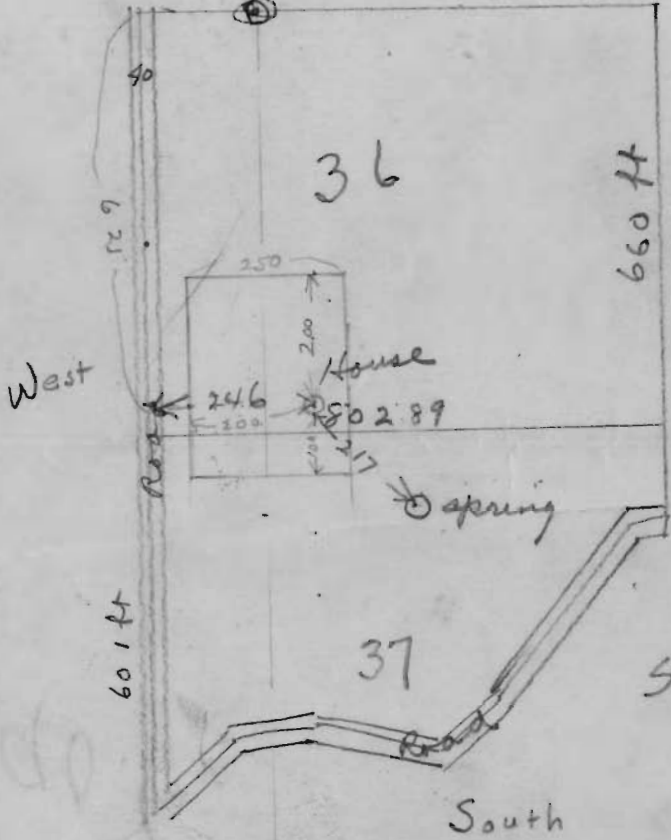
300 = 1 inch

North

1/4 Sec cor

14 13  
23 24  
Section corner

~~4 1/2 East~~  
700



NW 1/4 of NE 1/4  
Section 23 Jwp 2 S. R. 2 E. W. M.

STATE ENGINEER  
RECEIVED

JUL 28 1925

SALEM, OREGON

Application No 9083

Permit No. 5966

Center of Sec (23)