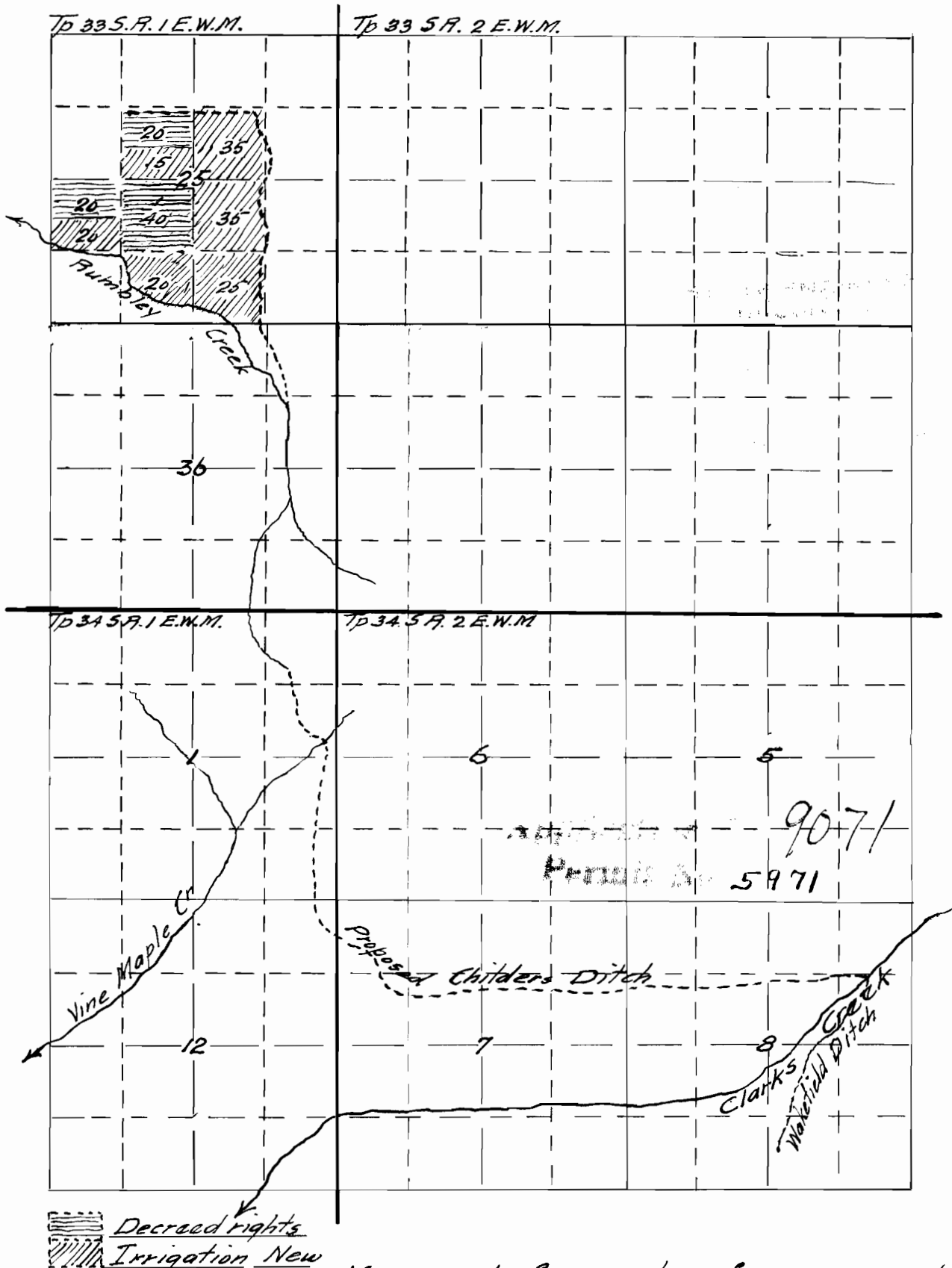


— MAP —

Accompanying application of E.L. CHILDERS of Trail Jackson County, Oregon. for permit to the waters of Clarks Creek tributary to Big Butte Creek, Jackson County. for the purpose of irrigation and supplemental supply to Decreed rights.

July 1923.



Map made from notes of survey made by Mr Childers, showing approximate location of ditch and correctly showing lands to be irrigated together with streams and ditches in immediate vicinity. compiled by.

Fred. N. Cummings. C.E.