

P511

(NE 1/4)

T35S 7W

1179

1/4 Sec. Cor.
To sec. 26 274.26

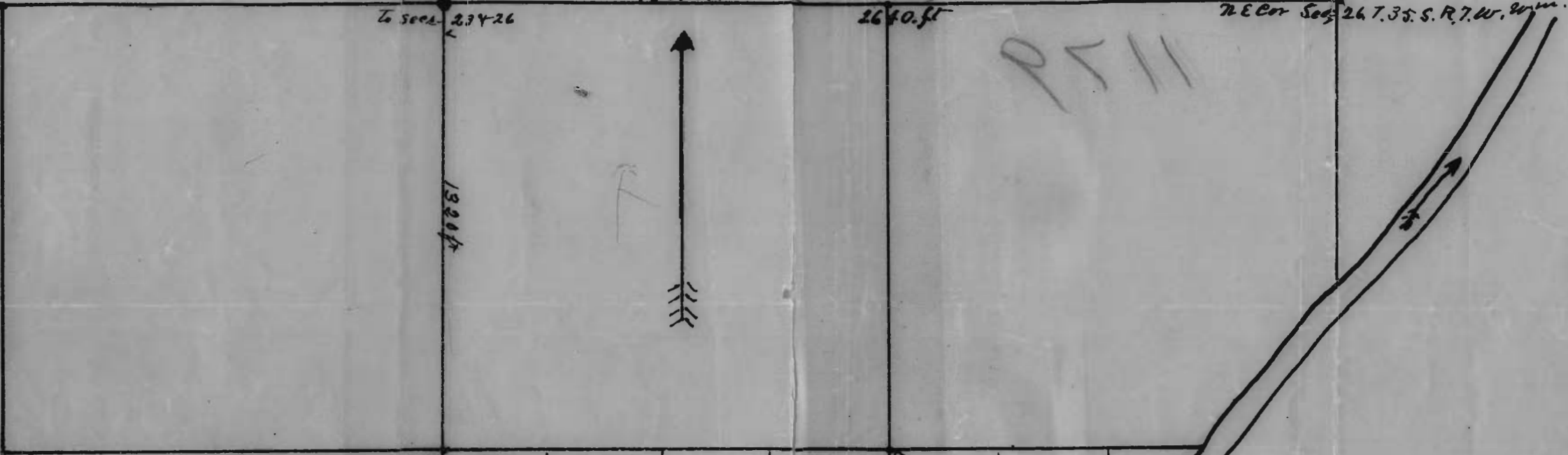
North

2640.51

NE Cor Sec 26 T.35. S. R. 7. W. 20 in.

P511

1320 ft



5.3176

Beginning of Ditch

Ditch Line

End of Ditch

528'

Land to be Irrigated 18 1/2

Pickett Creek

Rogue River

Scale 400 = 1

Grants Pass. Ore. Dec 14th 1910.

This is a true and correct
Plot as surveyed by me.

E. W. Kline.
Surveyor.

S.W. 1/4 of N.E. 1/4 Sec. 26.

RECEIVED
MAY 2 1911

Application No. 1179
Permit No. 602