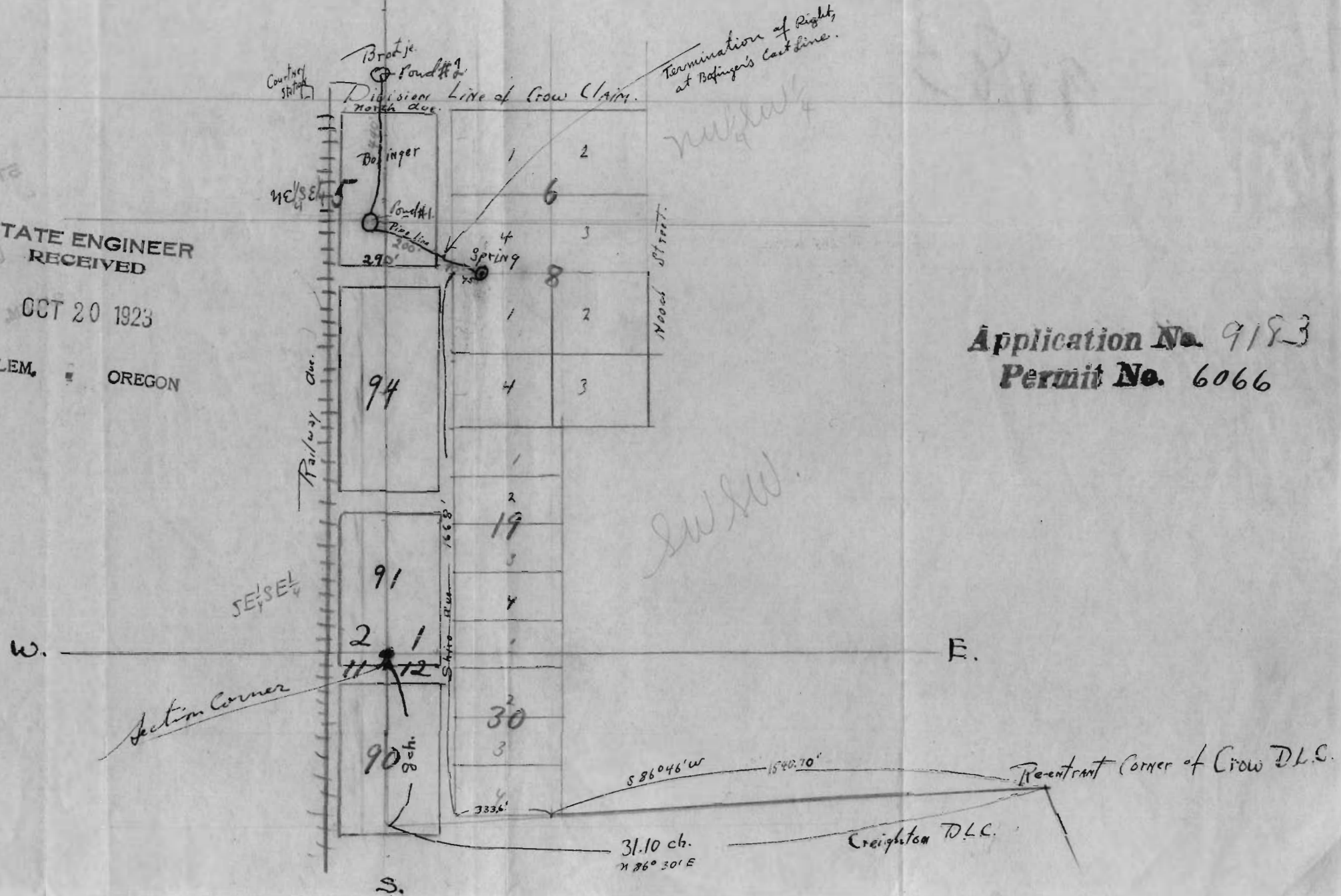


Application No. 9183

N. Map of a Portion of Oak Grove - being in parts of Sections 1, 2, 11 and 12; Township 2 South; Range 1 East of W.M. Clackamas County.

Scale - 1 Inch = 400 feet.

STATE ENGINEER RECEIVED  
OCT 20 1923  
SALEM, OREGON



Application No. 9183  
Permit No. 6066