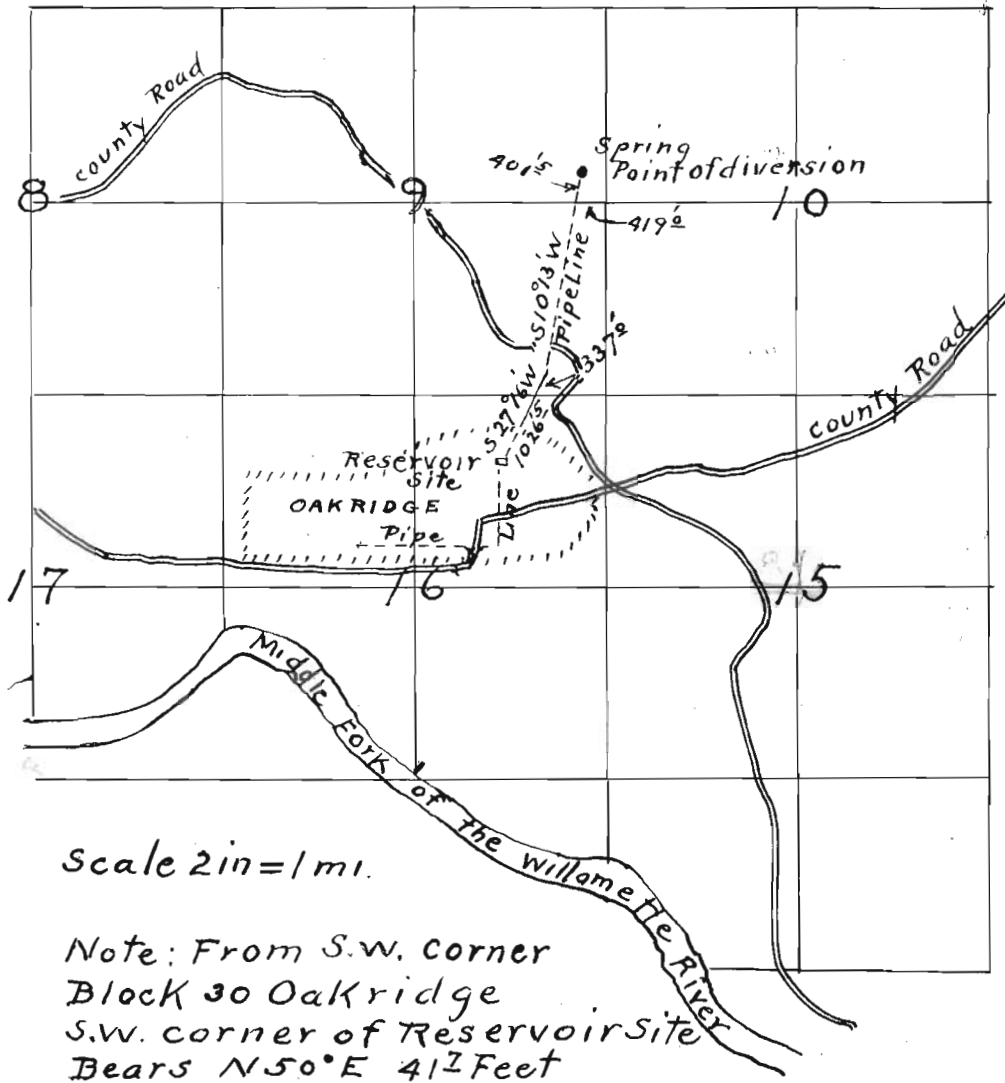


10
±
0

T.21S.R.3E.



Scale 2 in = 1 mi.

Note: From S.W. corner
Block 30 Oakridge
S.W. corner of Reservoir site
Bears $N50^{\circ}E$ 417 Feet

1/10/24

Application No. 9491
Permit No. 6296

STATE ENGINEER
RECEIVED

MAY 1 1924

SALEM, OREGON