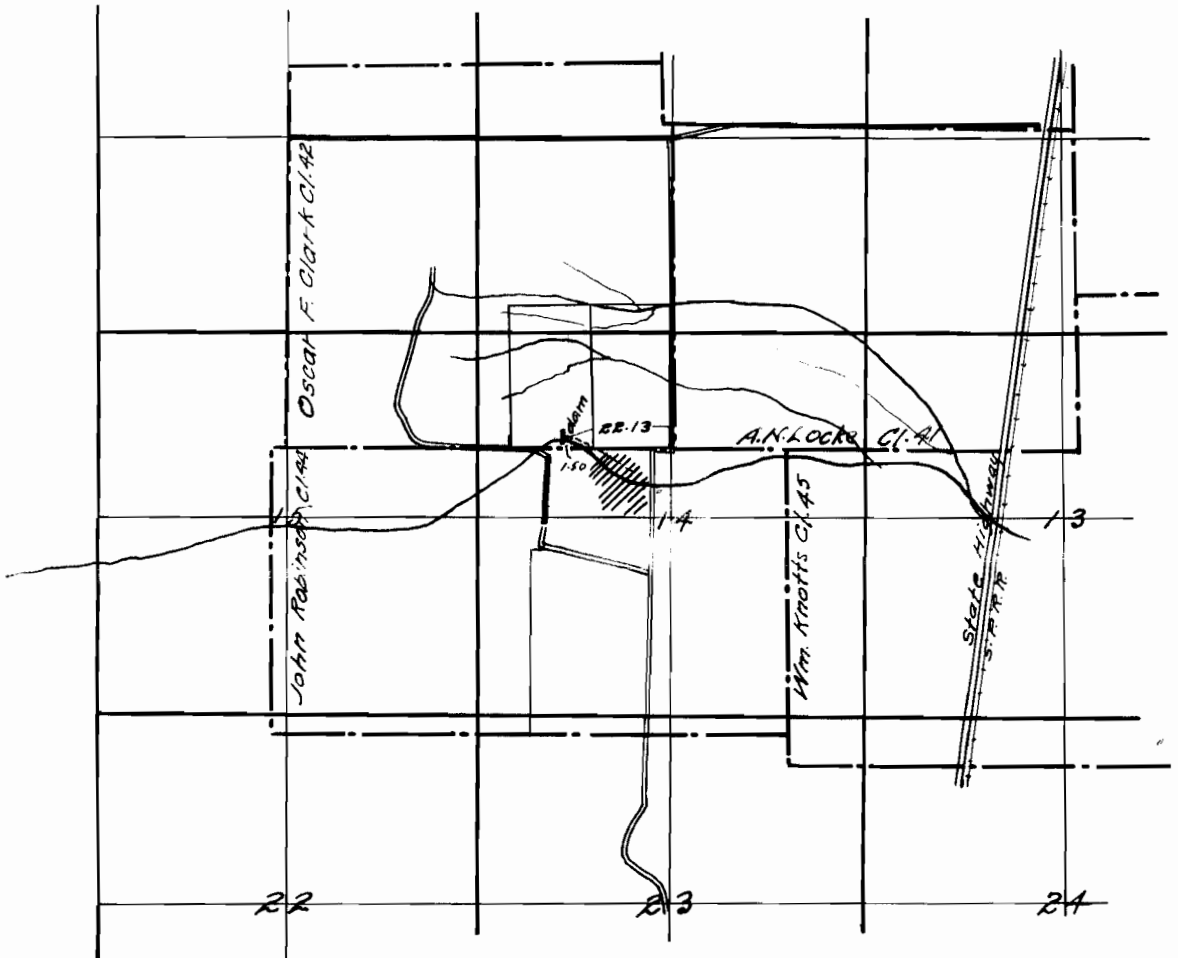


GRAGG IRRIGATION WORKS

T. 11S. R. 5 W., W.M.

BENTON COUNTY ORE.

Scale: - 1 in. = 40 chs.



Certificate:-

I, Walter W. Larsen, of Corvallis, Oregon, do hereby certify that this map was made from notes taken under my direction on July 15, 1924, and that it correctly represents the works described in the accompanying application together with the location of streams and other ditches in the immediate vicinity.

Walter W. Larsen
Registered Professional Engineer
Oregon No. 1261

May 1923

9654

6491