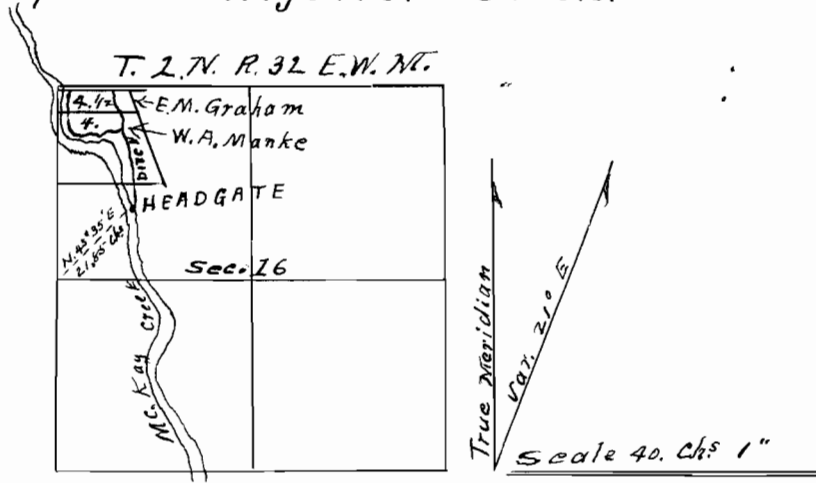


MAP of E. M. Graham and W. A. Manke's Proposed Irrigation Ditch.



I J. W. Kimbrell of Pendleton Or. do hereby certify that this map was made from notes taken during an actual survey made by me on the 30th day of April 1911 and that it correctly represents the Location of the Proposed Headgate, and ditch, and has written thereon the area in each smallest Legal subdivision which it is proposed to irrigate.

John W. Kimbrell Surveyor.

REGISTERED STATE ENGINEER

RECEIVED

MAY 3 1911

SAFETY DEPARTMENT

Map No. 1410

Project No. 652