

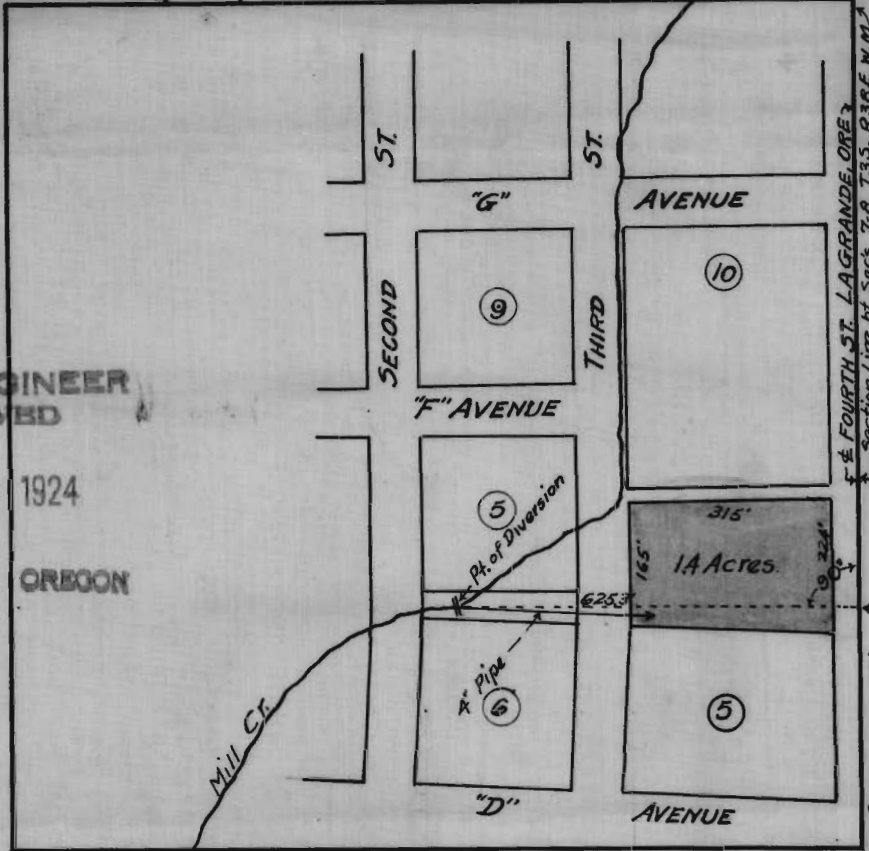
9889

MAP

TO ACCOMPANY APPLICATION OF
GEO. S. BIRNIE TO APPROPRIATE WATER.

N.E. 1/4 SE 1/4 SECTION 7, T.3 S., R.38 E. OF 1 W.M.

N
↑
STATE ENGINEER
RECEIVED
OCT 19 1924
SALEM, OREGON



← F & FOURTH ST. LA GRANDE, ORE.
Section Line bt. Secs 7-8, T.3 S., R.38 E. N.M.
← { 1704.3' FROM S.E. CORNER OF SECTION 7, T.3 S., R.38 E. N.M. }

SCALE 1"=300'

I, _____, of La Grande, Oregon, do hereby certify that this map was made from notes taken during an actual survey made under my immediate supervision on October 11, 1924, and that it correctly represents the works described in the accompanying application, together with the location of streams and other ditches in immediate vicinity.

Application No. 9889
Permit No. 6556

Surveyor.

9889