

Map Showing "TRUST BUSTER" group of mining claims,  
and Pipeline for water conveyance to Storage tank.

E 881

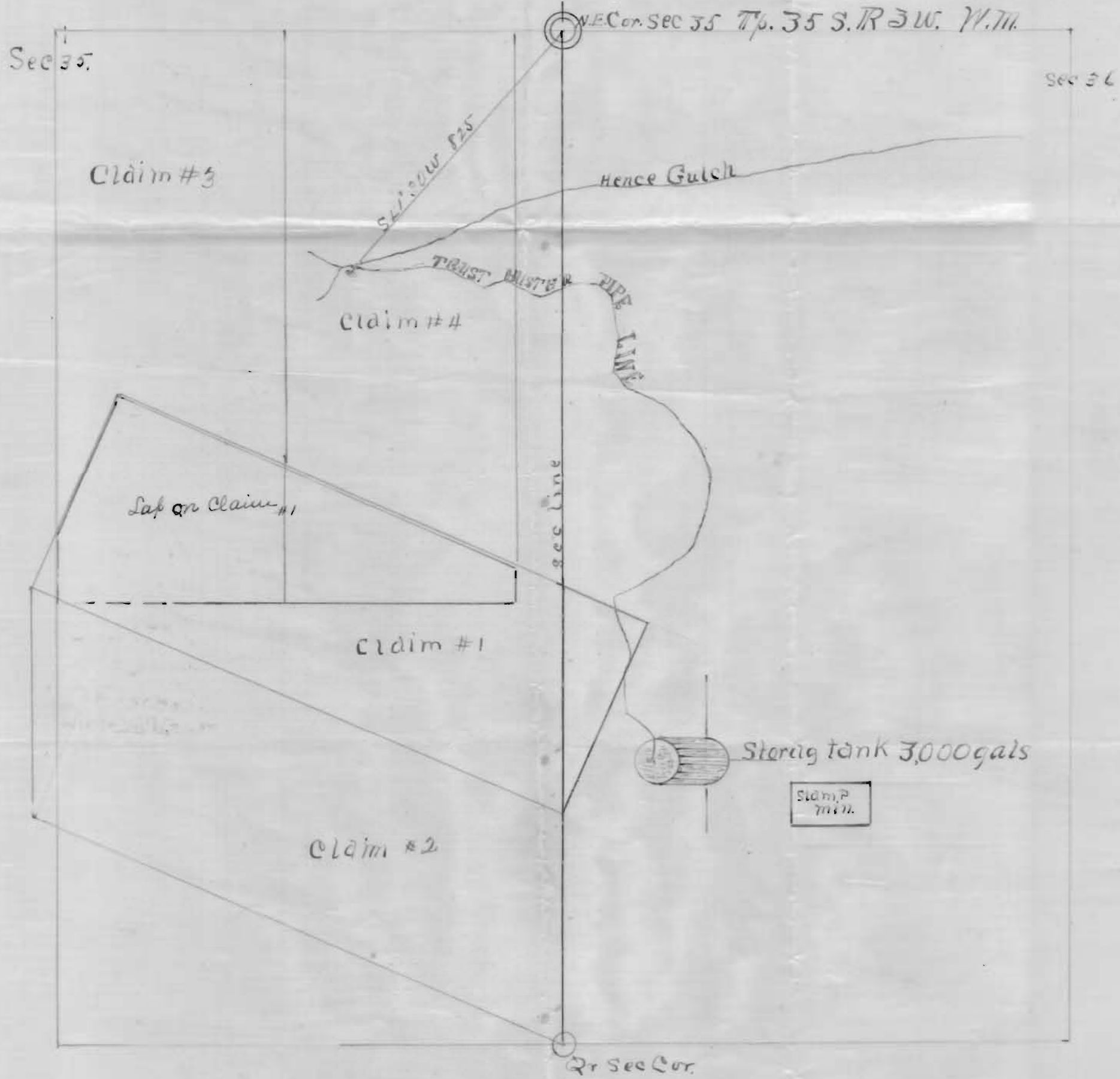
8881

I E. H. Cooper of Jackson County, Or.  
do hereby Certify, that this map was  
made from notes taken during an actual  
survey made by me on the 19<sup>th</sup> day of  
April 1911, and that it correctly represents  
the works described in the accompanying  
application together with the streams and  
other ditches in the immediate vicinity

E. H. Cooper,  
Surveyor

OFFICE OF STATE ENGINEER  
RECEIVED  
APR 26 1911  
SALMON - OREGON

Application No. 1383  
Permit No. 658



E 881  
Douse Patent  
Improved Finish. 1911 No 599

1383