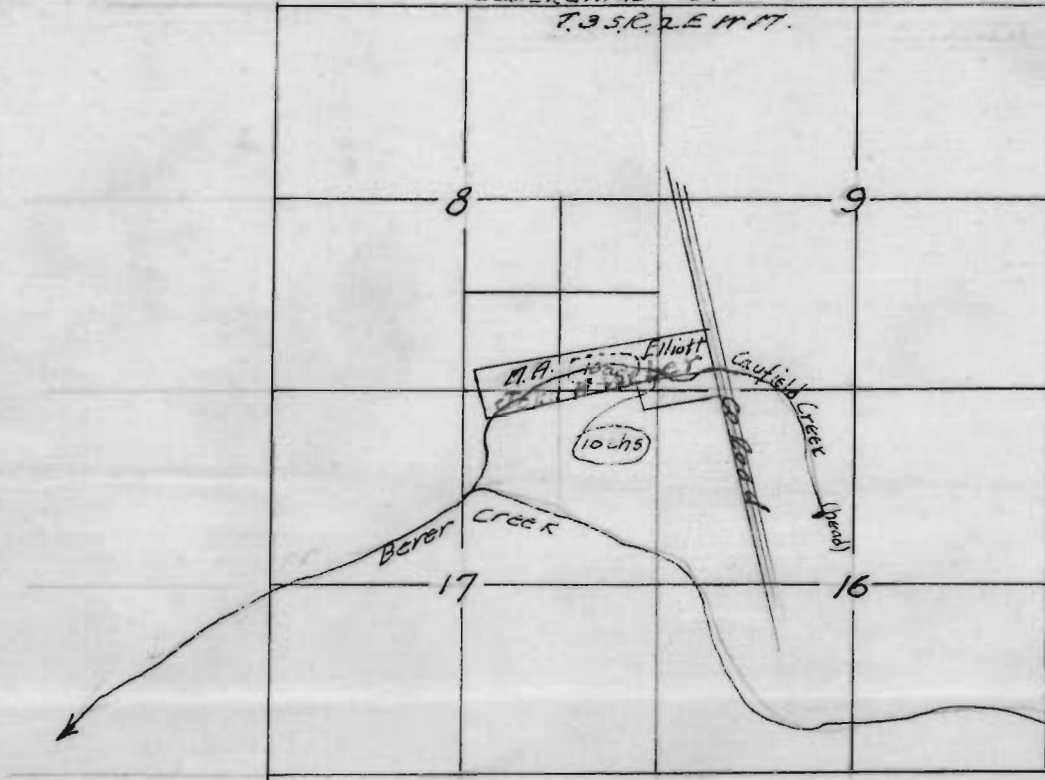


Clatsamas Co. Ore  
T.35.R.2.E.W.17.



PLAT OF LAND OF MA ELLIOTT & John F. Weber  
IN SE 1/4 SE 1/4 SEC. 8 T.35.R.2.E.W.17.  
Showing location of point of Diversion  
on Caulfield Creek 10.00 chs. N of Cor.  
to secs. 8, 9, 16 & 17.

Scale 40 ch = 1" Surveyed & Platted by  
L.A. Henderson C.E. Dec 11-1924

STATE ENGINEER  
RECEIVED

DEC 13 1924

SALEM, OREGON

Application No. 9952  
Permit No. 6604

FROM THE OFFICE OF  
OREGON CITY ABSTRACT CO  
Oregon City, Ore