

10005

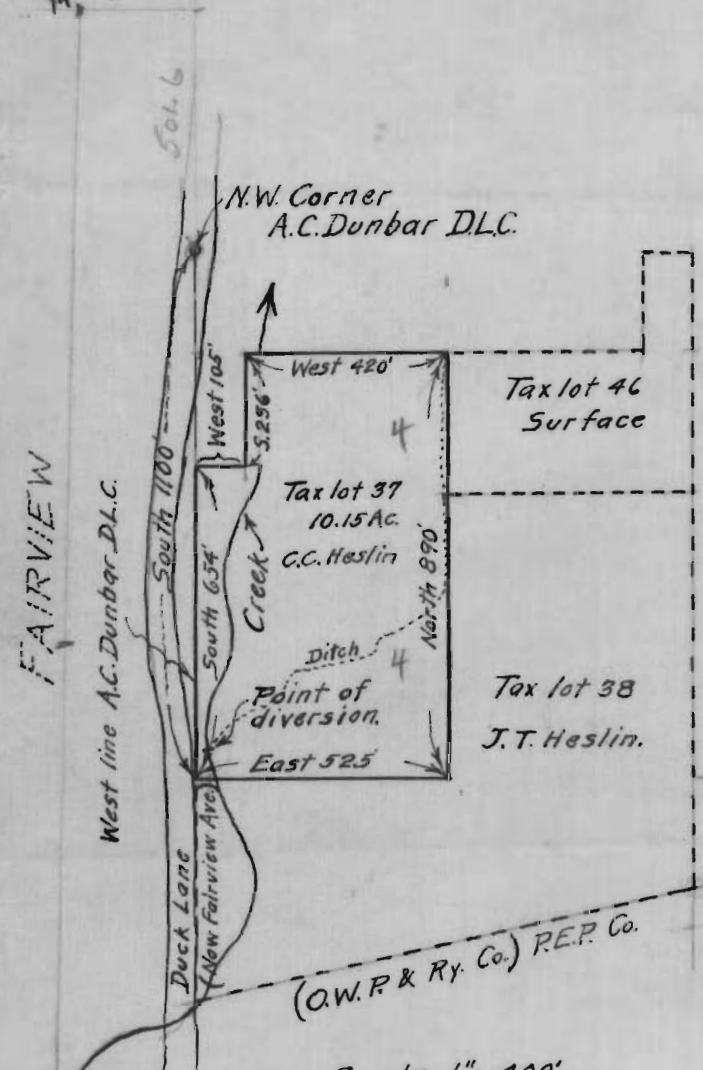
20001

1/4 Sec. corner bet. secs. 27 & 28 T. 1 N. R. 3 E.

STATE ENGINEER RECEIVED

FEB 13 1925

SALEM, OREGON



MAP SHOWING LOCATION OF HESLIN DIVERSION DAM AND DITCH IN W 1/2, SW 1/4 SEC. 27, T. 1 N. R. 3 E. W. M.

Application No. 10005
Permit No. 6666

Signed by
C.C. Heslin

10002