



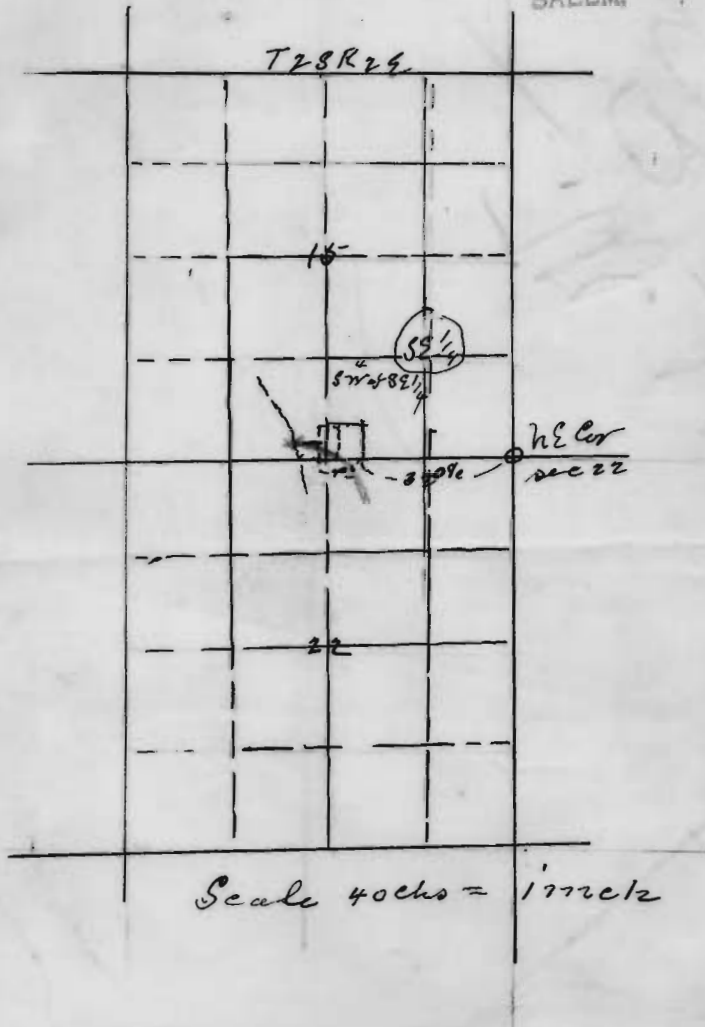
10203

10203

STATE ENGINEER
RECEIVED

MAY 28 1925

SALEM, OREGON



10203

Application No. 10203

Permit No. 6772

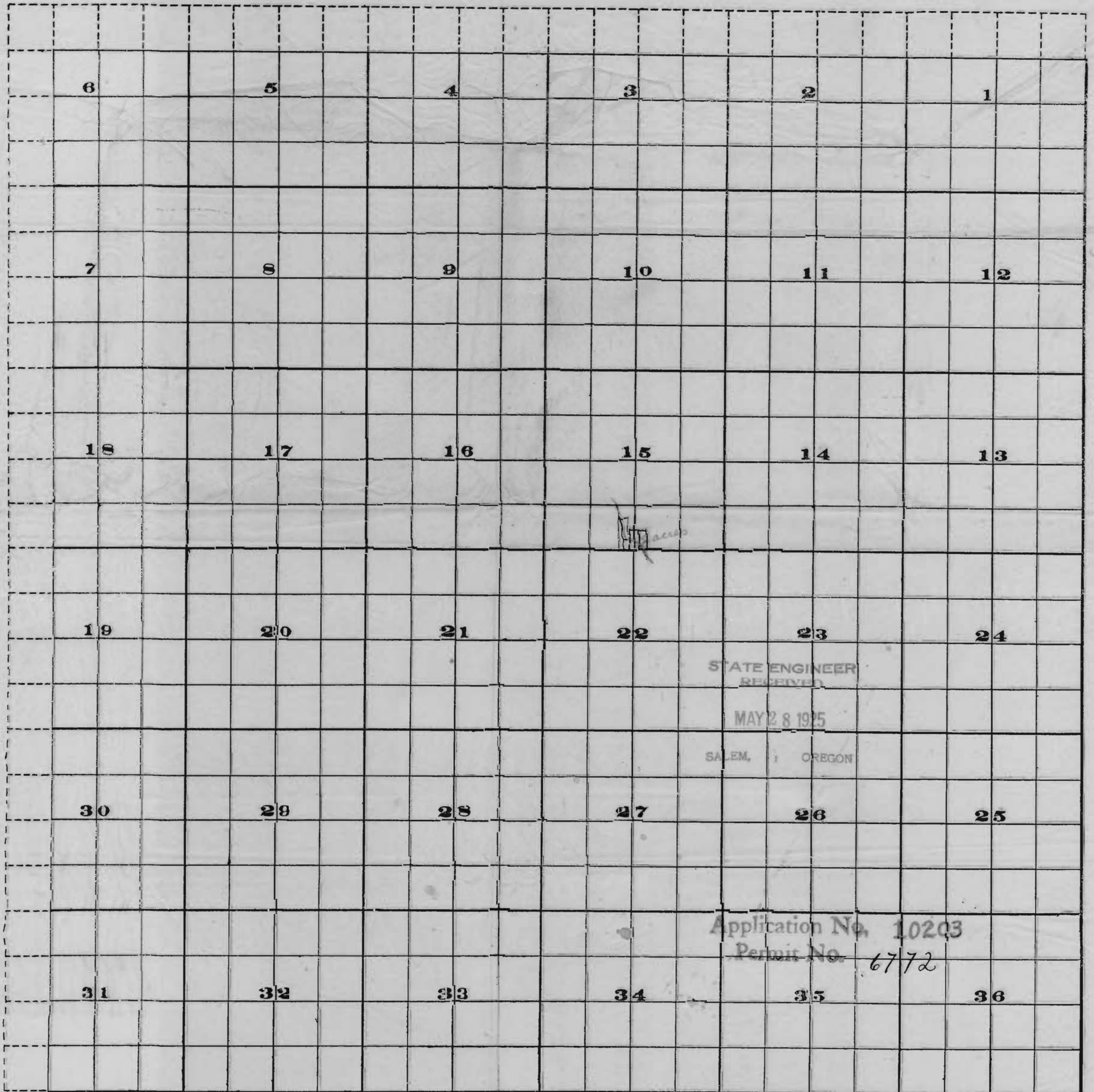
10203

Township 25,

Range 2E.

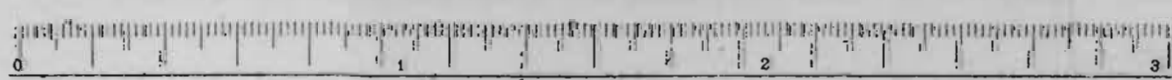
10501

10501



STATE ENGINEER
RECEIVED
MAY 28 1925
SALEM, OREGON

Application No. 10203
Permit No. 6772



Scale of Feet.

10501

10502