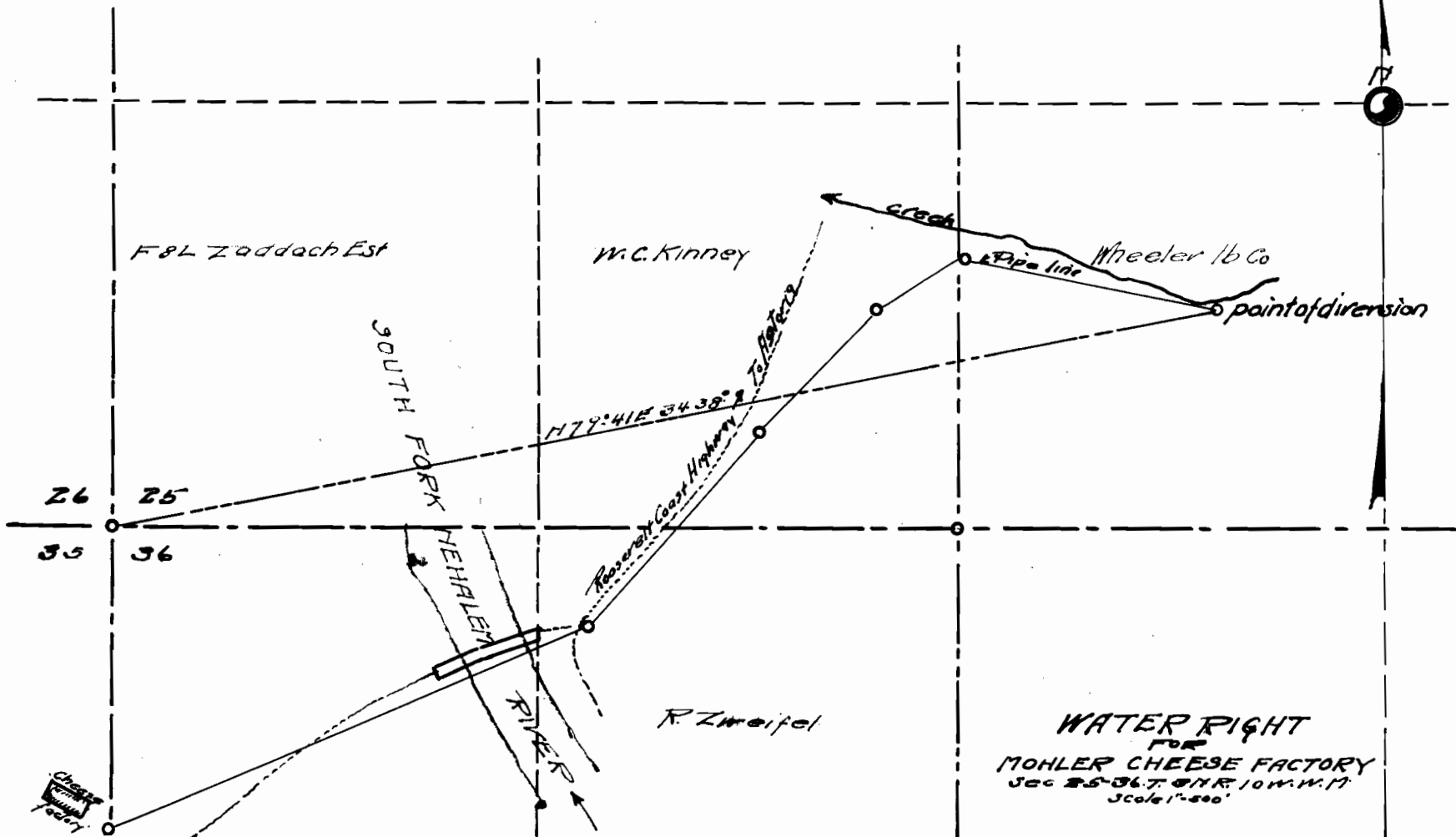


9842

SURVEYOR'S CERTIFICATE

I, W. E. Anderson of Tillamook, Ore. do hereby certify that this map was made from notes taken during an actual survey made by May 28, 1925 under the direct supervision of W. S. Coates, Co. Engineer of Tillamook County and that it correctly represents the works herein shown
Deputy Co. Engr.
W. E. Anderson



WATER RIGHT
FOR
MOHLER CHEESE FACTORY
Sec 25-36 T. 91 R. 10 W. N. 17
Scale 1"=500'

Application No. 9842
Permit No. 6804