

**SURVEYOR'S CERTIFICATE**

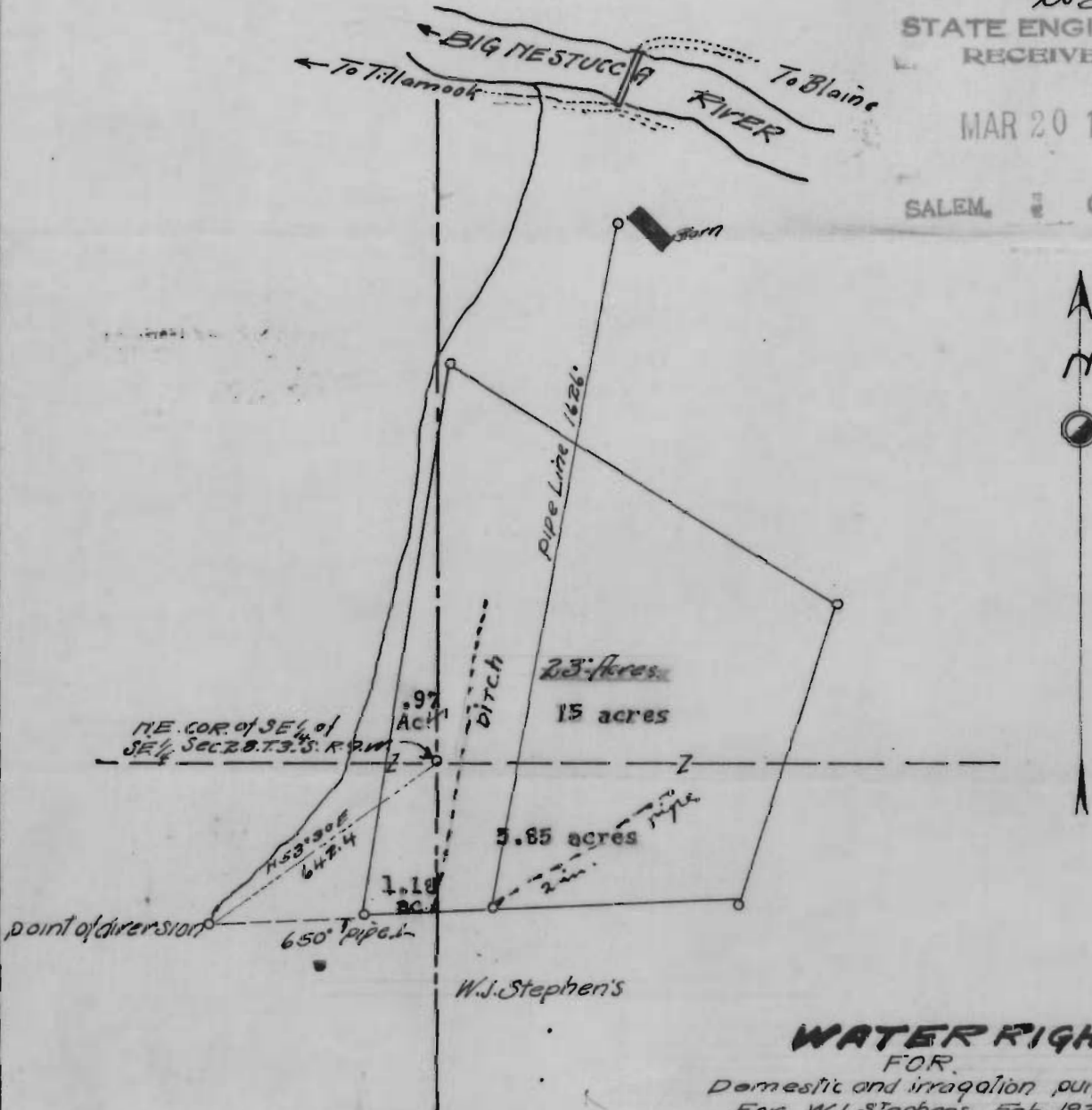
I, W. E. Anderson of Tillamook Ore, do here certify that this map was made from notes taken during an actual survey made by me Feb 18, 1925 under the direct supervision of W. S. Coates, Co. Engineer of Tillamook County, and that it represents the works herein shown together with the streams and River.

Deputy Co. Eng'r  
W. E. Anderson

STATE ENGINEER  
RECEIVED

MAR 20 1925

SALEM, OREGON



**WATER RIGHT**  
FOR

Domestic and irrigation purposes.  
For W. J. Stephens, Feb. 1925.

Application No. 10050

Permit No. 7112

10050